



# Operating Instructions

## Model 37210

### Hydrostatic Test Pump



DIMENSIONS:	33" L x 19" W x 18"H
WEIGHT:	275 lbs 125 kg
PUMP:	<p>Triplex Plunger: Positive Displacement            Inlet: ¾" Garden Hose            Outlet: ½" NPT            Capacity: 3.5 gpm / 13.25 lpm            Pressure: 0 – 3000psi, 0-200 bar            Operating Speed: 1760rpm            Lubrication: Continuous oil bath                              30W Non-Detergent Oil            Shaft Size: 1-3/8"</p>
MOTOR:	<p>7.5 hp 208-230V, 3 phase,60hz, 21.5 amps            460V, 3 phase, 60hz, 10 amps</p>
CONTROL:	Adjustable pressure relief valve
GAUGE:	Glycerin filled, 0-4000psi
DISCHARGE HOSE:	½" x 10' (3m), 5000psi



## WHEELER-REX LIMITED LIFETIME WARRANTY

WHEELER-REX covers its products with a Limited Lifetime Warranty, with exception of pipe threading machines which have a Limited Three Year Warranty (including electric motors). Warranties from manufacturers of components used in our products may pre-empt the Wheeler-Rex warranty. Wheeler-Rex warranties against defects in material or workmanship. To take advantage of this warranty, the complete product must be delivered prepaid to Wheeler-Rex or any WHEELER-REX AUTHORIZED SERVICE CENTER. No tools are to be returned to the factory without receiving prior authorization. Obviously, failures due to misuse, abuse, or normal wear and tear are not covered by this warranty. **NO OTHER WARRANTY, WRITTEN, OR ORAL, APPLIES. THERE ARE NO WARRANTIES WHICH EXTEND BEYOND THE DESCRIPTION ON THE FACE HEREOF.** No employee, agent, dealer, or other person is authorized to give any warranty on behalf of Wheeler-Rex. Warranted products will be repaired or replaced at our option, at no charge and returned to you via prepaid transportation. Such replacement or repair is the exclusive remedy available from Wheeler-Rex. Wheeler-Rex is not liable for damage of any sort, including incidental and consequential damages. Some U.S.A. states do not allow the exclusion or limitation of incidental or consequential damages, so the above limitation or exclusion may not apply. This warranty gives you specific legal rights, and you may also have other rights which vary from state to state.

Form # 1031

## WARNING

### GENERAL TOOL OPERATION WARNINGS

#### FOR ALL TOOLS-

1. **Keep Guards in Place** and in working order.
2. **Remove Adjusting Keys and Wrenches** from tool before turning it on.
3. **Keep Work Area Clean.** Cluttered areas and benches invite accidents.
4. **Avoid Dangerous Environment.** Don't use power tools in damp or wet locations. Keep work area well lit. Don't expose power tools to rain.
5. **If you must use an electric tool** in a damp or wet location; make sure it is plugged into a circuit which is protected by a ground fault interrupter.
6. **Keep Children Away. ALL VISITORS SHOULD BE KEPT A SAFE DISTANCE FROM WORK AREA.**
7. **Store Idle Tools** in dry, high, or locked-up place out of reach of children.
8. **Don't Force Tool.** It will do a better and safer job at the rate for which it is designed.
9. **Use Right Tool.** Don't force a small tool or attachment to do the job of a heavy-duty tool.
10. **Wear Proper Apparel.** No loose clothing or jewelry to get caught in moving parts. Rubber gloves and footwear are recommended when working outdoors.
11. **Use Safety Glasses.**
12. **Don't Abuse Cord.** Never carry tool by cord or yank it to disconnect from receptacle. Keep cord from heat, oil, and sharp edges.
13. **Secure Work.** Use clamps or vise to hold work when practical. It's safer than using your hand and it frees both hands to operate tool.
14. **Don't Overreach.** Keep proper footing and balance at all times.
15. **Maintain Tools Properly.** Keep tools sharp and clean for best and safest performance. Follow instructions for lubricating and changing accessories. Equipment operators must have proper maintenance & instruction sheets. Be sure the tool operator reads and understands this information. If you don't have current maintenance and instruction sheets, contact the factory & we will supply them at no charge.
16. **Disconnect Tools** when not in use; before servicing; when changing accessories such as dies, cutters, etc.
17. **Avoid Accidental Starting.** Don't carry plugged-in tool with finger on switch. Be sure switch is off when plugging in.
18. **Outdoor Use Extension Cords.** When tool is used outdoors, use only extension cords suitable for use outdoors and so marked.
19. **Wear Ear Protection** if exposed to long periods of very noisy shop operations.
20. **Do not operate** tools while under the influence of alcohol, drugs or medication.



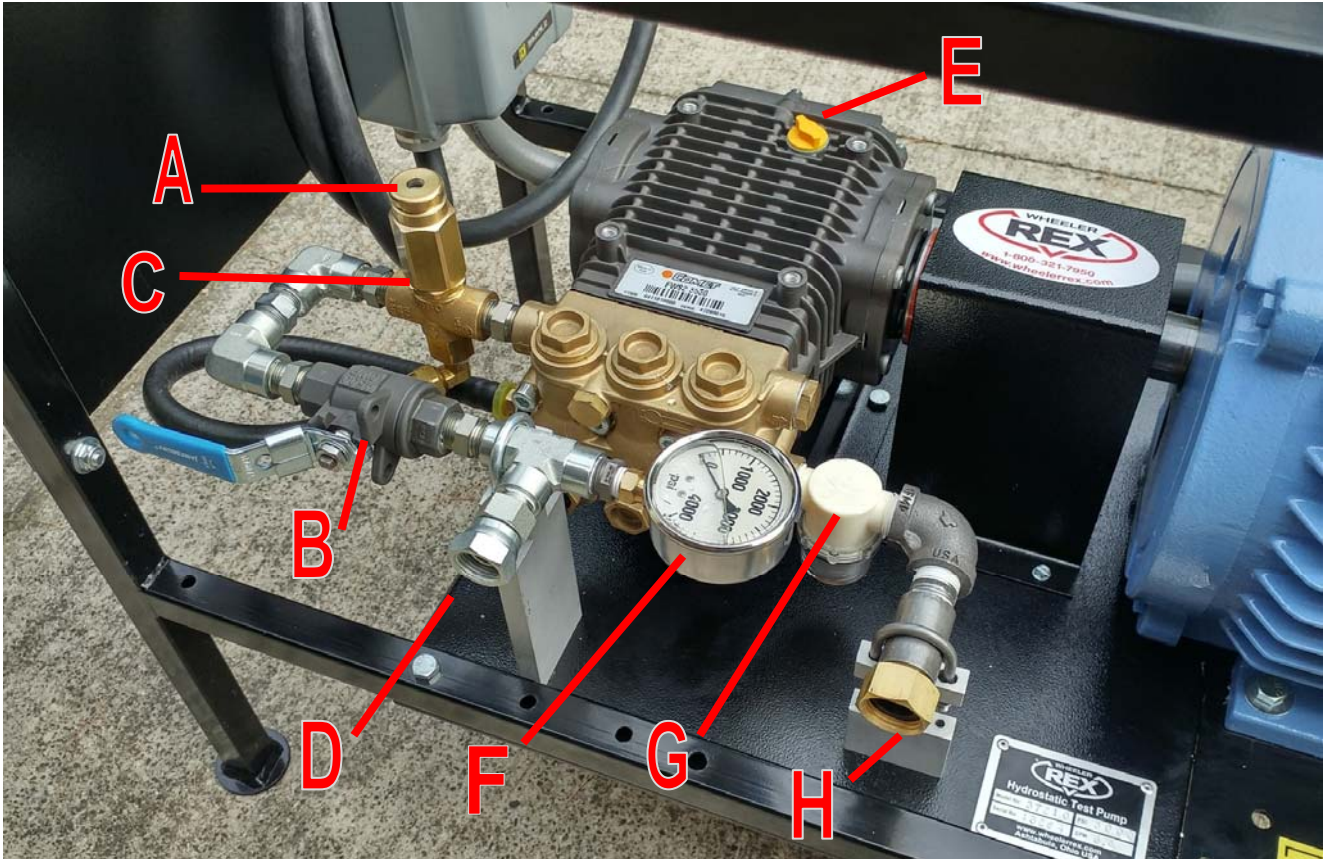


# Operating Instructions

## Model 37210

### Hydrostatic Test Pump

#### Parts:



A	Pressure Relief Valve
B	Isolation Valve
C	Jam Nut
D	Outlet Connection
E	Pump Oil Cap with Vent
F	Pressure Gauge
G	Sediment Bowl with Screen
H	Garden Hose Inlet connection
J	Oil Level Sight Glass *

**J** \* Note: Sight Glass Location on side of pump



# Operating Instructions

## Model 37210

### Hydrostatic Test Pump

Parts . . . continued



Motor Start/Stop Switch



# Operating Instructions

## Model 37210

### Hydrostatic Test Pump

#### Pressure Feed / Gravity Feed Method: (Preferred Method)

1. Fill the water line (or test vessel) to be tested prior to pump connection.
2. Connect water supply hose to the garden hose inlet connection (H) on the pump.
3. Open valve and turn water supply on.
4. Purge the pump and pressure hose of all air.
5. Connect output (pressure) hose between pump output connection (D) and water line (or vessel) being tested.
6. Turn pump on.
7. Purge water line (or vessel) of all air at the highest point of the system.
8. Bring water line (or vessel) to pressure. Watch the gauge (F) while pumping. When the desired pressure is achieved, turn the isolation valve (B) to the "off" position. The engine can now be turned off. If pressure drops, there is a leak in the line.

#### Siphon Method

*Use a clean water source*

1. Fill the water line to be tested.
2. Fill the intake hose (WR PN #34550) with water, then quickly place the hose into a bucket and turn pump on. (The unit is self-priming once primed.) Continue to pump until you see the water coming out of the outlet, with little or no air mixed with it.
3. Connect the output hose to the water line. Continue on with steps 6 through 8 in pressure feed method.

#### Pre-Setting Your Pump

*Your pump can be pre-set to a specific pressure easily by adjusting the pressure relief valve.*

1. Unscrew (counterclockwise direction) pressure relief valve knob (a) a few turns. Be sure not to unscrew valve knob all the way as internal parts can be easily lost.
2. Add a ball valve (not supplied with pump) to the end of the high pressure hose.
3. Follow steps 2 through 4 from the 'Pressure Feed Method'.
4. As water is flowing out of the high pressure hose, turn the ball valve to the "off" position.
5. Slowly start turning pressure relief valve knob (A) (in the clockwise direction) by ¼ turn increments, until you reach the desired pressure. Maximum pressure is 3000psi. Tighten jam nut (C) to lock pressure relief knob in place.
6. Your test pump is now pre-set. This eliminates over-pressurizing the water line (or the vessel).



# Operating Instructions

## Model 37210

# Hydrostatic Test Pump

### Troubleshooting Your Pump

Test pressure not being reached:

- Possible air in line (or vessel)
  - ◇ Air needs to be purged from system.
  - ◇ Remove pump from system and follow steps 1 thru 6 of the "Pre-Setting Your Pump" section.
  - ◇ If using the Siphon Method and not getting pressure, try the 'Pressure Feed' or 'Gravity Feed Method' to ensure water is getting into the pump.
  - ◇ Check strainer bowl (E) O-Ring for cracks.
- Pressure relief valve not adjusted properly.
  - ◇ Turn relief valve counterclockwise and watch for change in pressure.

### Pump Maintenance

- Pump 50/50 antifreeze/water solution through pump after each use to lubricate internal parts of pump and to avoid freezing in cold weather.
- Check strainer Bowl & O-Ring (G) for cracks prior to each use.
- Check oil level through oil sight glass (J) located on front of pump prior to each use. Comet Pumps recommends changing oil after 50 hours of break-in operation. Change oil every 3 (three) months or after 500 hours of use. Pump requires 30W Non-detergent oil. Add oil through pump crankcase cap (E).
- Suction Hose Wheeler Rex PN 34550

### **CAUTION !!!**

**This pump is designed for water only!!**

The pump is equipped with an adjustable pressure relief valve (A), which helps protect the system from being over pressurized. It can be preset by plugging the end of the hose. Turn the adjusting knob clockwise to increase pressure and counterclockwise to decrease.



# Operating Instructions

## Model 37210

### Hydrostatic Test Pump

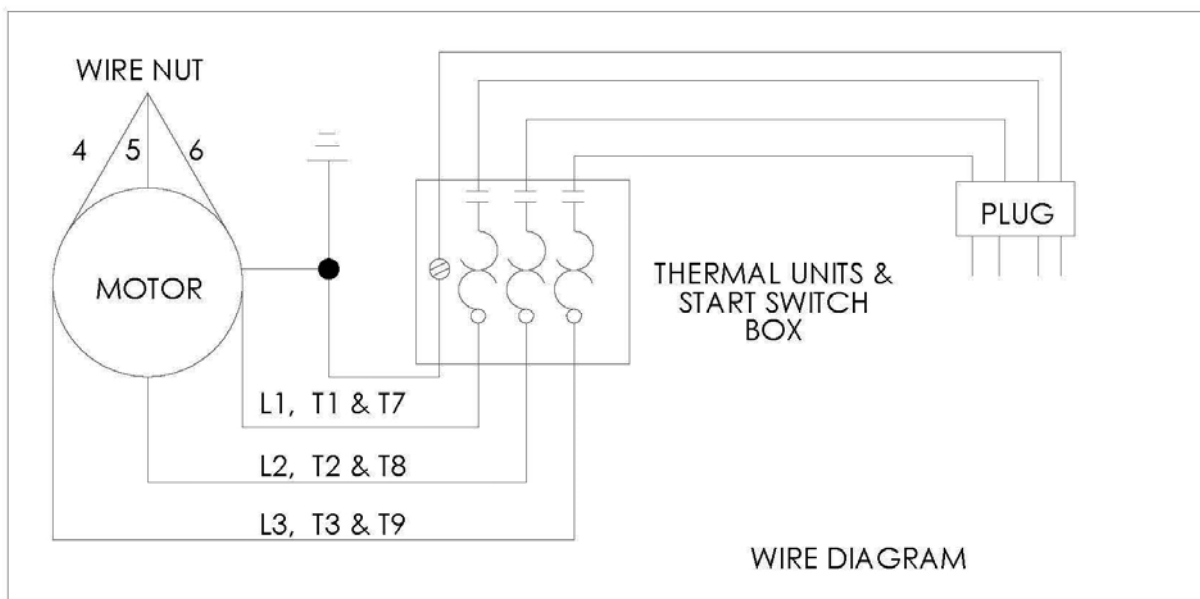


#### Motor Start / Stop Switch

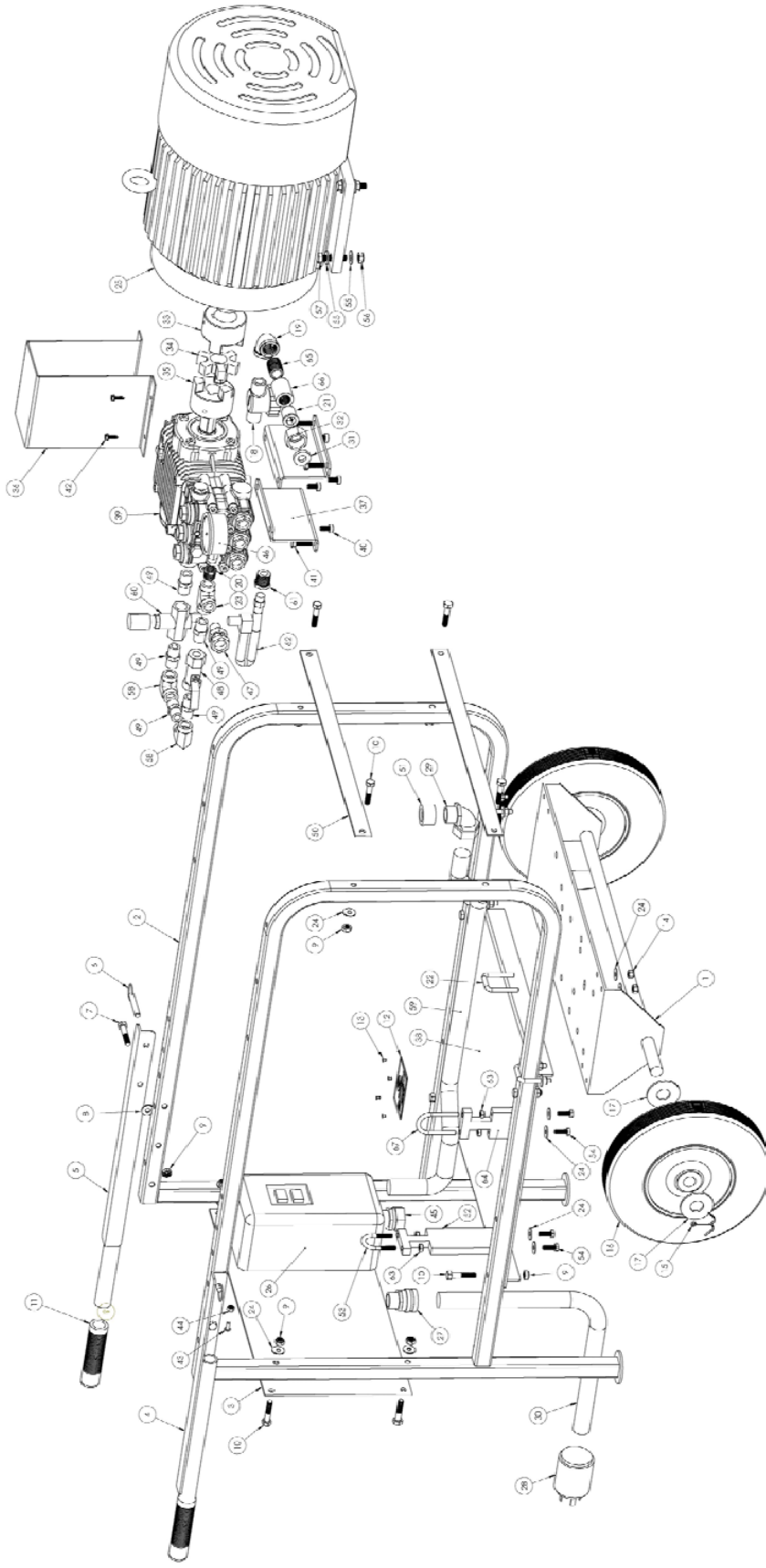
- If motor will not run when turned on check for "Blown Thermal Unit"

Thermal Units  
Wheeler Rex  
PN 276387

#### Wiring Diagram







# 37210 Hydrostatic Test Pump



Item	Part No	Description	Qty
1	700943	AXLE ASSEMBLY	1
2	700387	CART SIDE	2
3	700958	END PLATE	1
4	700858	RIGHT HANDLE ASSEMBLY	1
5	700859	LEFT HANDLE ASSEMBLY	1
6	276752	COTTERLESS PIN w/ RING	2
7	275639	5/16-18 x 1 3/4" HHCS	2
8	275685	5/16" FLAT WASHER	2
9	275857	5/16-18 HEX NYLON INSERT LOCKNUTS	18
10	275638	5/16 x 1 1/2" HEX HEAD CAP SCREW	12
11	154	GRIP	2
12	220874	NAME PLATE	1
13	275543	POP RIVET, STAR 4-2AAD	4
14	275426	1/4-20 ESNA STOP NUT	8
15	276330	1/8 x 2 5/16 COTTER PIN	2
16	276441	THREADER CART WHEEL	2
17	276129	3/4" WASHER	4
18	276420	STRAINER ASSEMBLY	1
19	275631	1/2" 90° ELBOW	1
20	5613	3/8" to 1/4" HEX REDUCING BUSHING	1
21	275918	SWIVEL ADAPTER	1
22	700406	U-BOLT	4
23	276800	TEE	1
24	276540	1/4" FLAT WASHER	24
25	277315	MOTOR	1
26	276388	STARTER BOX	1
27	275189	CORD GRIP	1
28	276390	PLUG, 220V	1
29	276389	90 DEG ELE. SEAL TITE	1
30	700657	POWER CORD	1
31	275941	HOSE WASHER	1
32	275925	SWIVEL NUT	1
33	276385	1 3/8" LOVE-JOY COUPLING HALF	1
34	277318	CENTER DISK	1
35	277319	24mm LOVE-JOY COUPLING HALF	1
36	701584	COUPLING GUARD	1

Item	Part No	Description	Qty
37	701583	PUMP BRACKET	2
38	701587	PUMP SUPPORT PLATE	1
39	277316	PLUNGER PUMP	1
40	600663	8mm x 1.25mm x 15mm Long SHCS	4
41	1020	5/16-18 x 1" HEX HEAD CAP SCREW	4
42	275427	#10-24 x 5/8" SLTD HX WSHR HD, TYPE F	4
43	275004	#10-24 PAN HEAD MACHINE SCREW	4
44	275708	#10-24 HEX NYLON INSERT LOCKNUTS	4
45	277317	STRAIGHT SEALTITE CONNECTOR	1
46	276375	GAGE 4000 PSI	1
47	276345	3/8 NPT x 1/2 HOSE SWIVEL ADAPTER	1
48	276798	1/2" BALL VALVE	1
49	276801	3/8 HYDRAULIC NIPPLE	5
50	700959	TOP SUPPORT	2
51	276669	BUSHING	1
52	701538	SUPPORT BRACE	1
53	277262	U-BOLT - 1/4" x 1" x 1 3/4"	1
54	560081	1/4-20 x 3/4" HHCS	4
55	5110	3/8" FLAT WASHER	8
56	105	3/8"-16 ESNA NUT	4
57	276122	3/8-16 x 1 1/2" HEX HEAD CAP SCREW	4
58	277310	3/8" NPT F x 3/8" NPT F HYD 90	2
59	701581	SEALTIGHT	1
60	277320	UNLOADER VALVE	1
61	275670	1/2 x 1/4 FS SCR D HX BUSH	1
62	275915	BYPASS HOSE	1
63	729	1/4-20 THIN ESNA NUT	4
64	701563	INLET SPACER	1
65	275669	1/2 x CLOSE PIPE NIPPLE	1
66	275475	1/2" COUPLING	1
67	275637	U-BOLT	1
68	276723	TERMINAL *** Not Shown***	8
69	276601	WIRE NUT *** Not Shown***	4
70	277181	WARNING TAG ***Not Shown***	1
71	276387	THERMAL UNIT ***Not Shown***	3
72	220577	PRESSURE HOSE ***Not Shown***	1
73	34550	SUCTION HOSE***Not Shown***	1

**Notes.....**



Wheeler-Rex • Ashtabula, Ohio

Tel: 800-321-7950 or 440-992-2925 • Fax: 440-992-2925

wheeler@wheelerrex.com • www.wheelerrex.com