

32450

Hydrostatic Test Pump

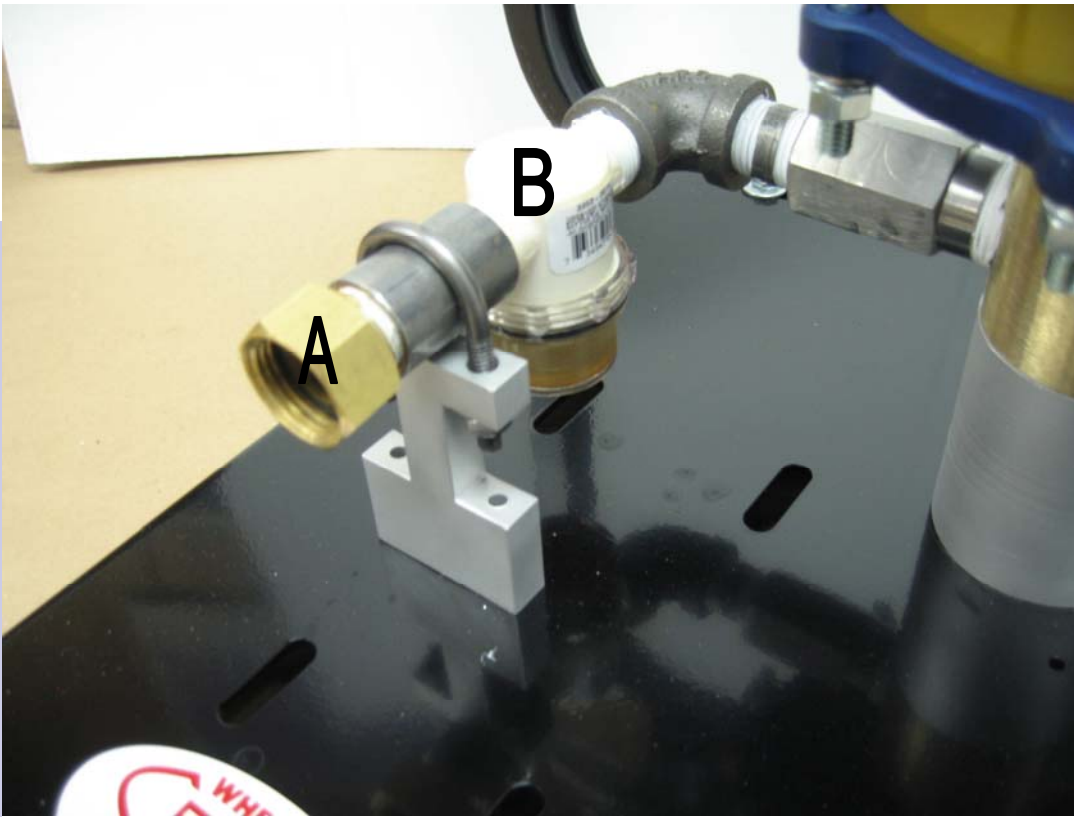


Wheeler-Rex • Ashtabula, Ohio

Tel: 800-321-7950 or 440-992-2925 • Fax: 440-992-2925

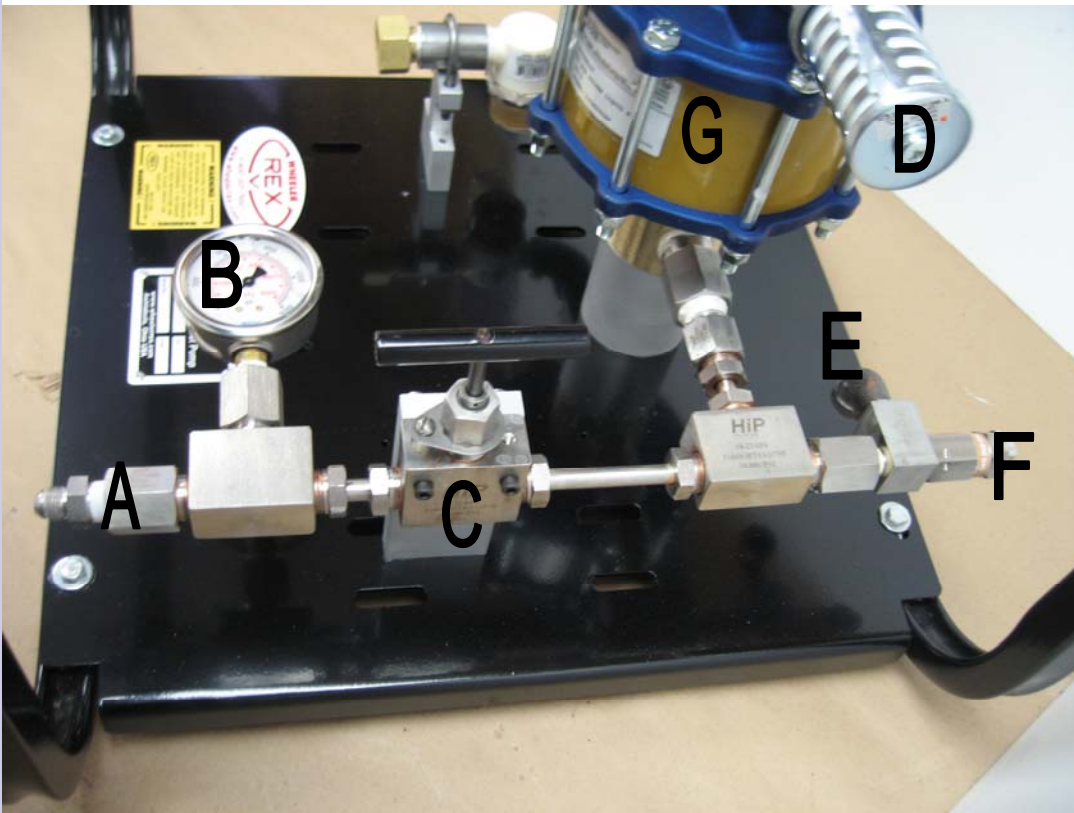
wheeler@wheelerrex.com • www.wheelerrex.com

Getting to Know Your Pump



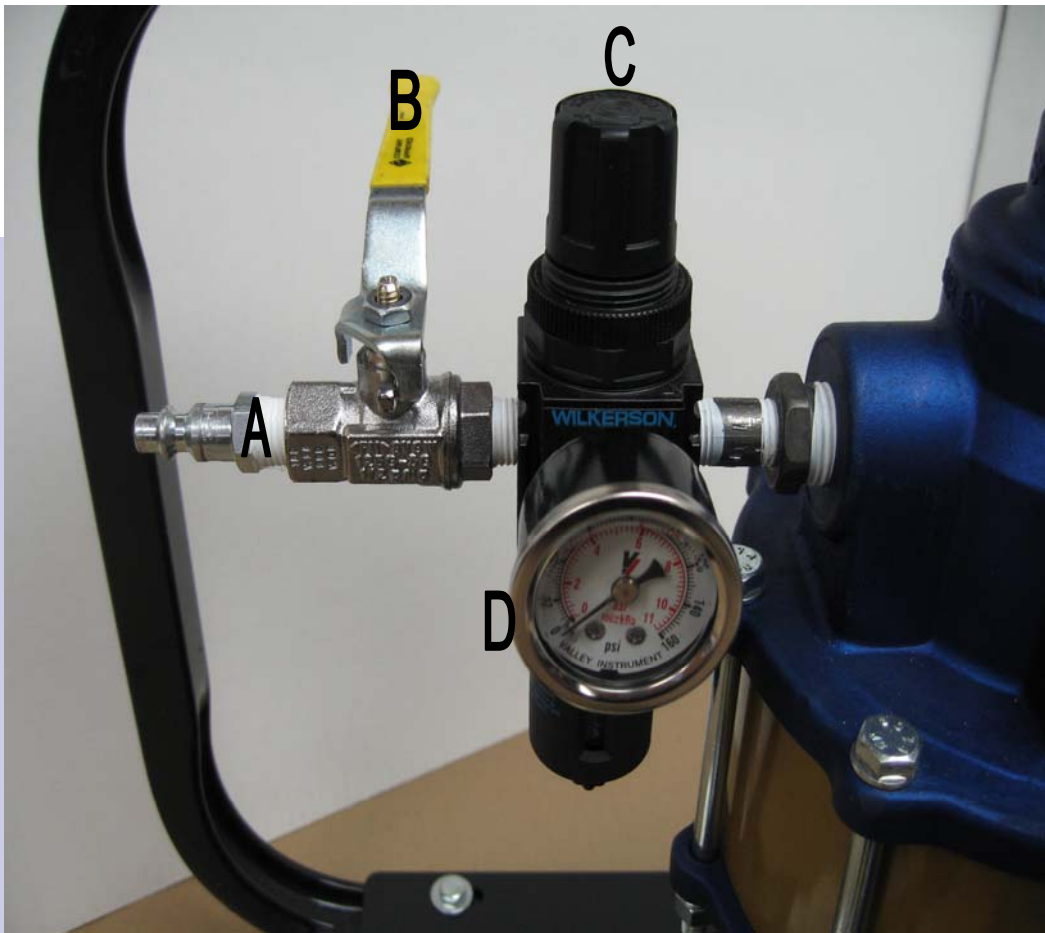
- A. Garden Hose connection (water inlet)
- B. Strainer with removable clear bowl

Fig. 1



- A. High pressure hose outlet connection
- B. Gauge
- C. Needle Valve
- D. Silencer
- E. Pressure relief outlet
- F. Pressure relief valve
- G. Air Pump

Fig. 2



- A. Air Nipple
(not supplied)
- B. Air Valve
- C. Air Regulator
- D. Air Gauge

Fig. 3

Connecting your test pump:

1. Connect water to the garden hose inlet ('A' FIG 1). Turn water source on. It may be necessary to unscrew the clear bowl ('B' FIG 1) to vent out any excess air from the water line.
2. Connect air line ('A' FIG 3) to test pump. Keep air valve ('B' FIG 3) in the 'off' position.
3. Connect output pressure line to test vessel.
4. Connect output pressure line to test pump ('A' FIG 2).
5. Open needle valve ('C' FIG 2). Turn counter clockwise to open valve.
6. Pull up (to unlock) on Air regulator cap ('C' FIG 3) and unscrew (counter clockwise) to set the incoming air pressure at 0 PSI.

Operating your Test pump:

1. Open air valve ('B' FIG 3)
2. Slowly start to turn air regulator cap ('C' FIG 3) clockwise until air pump starts working. Push air regulator cap down to lock air cap.
3. Incoming air pressure controls the output water pressure.
4. See Pressure Relief Valve Section.
5. Once the 'Test Pressure' has been met turn needle valve ('C' FIG 2) to the off position. Turn clockwise to close.
6. Air valve ('A' FIG 3) can now be turned off.
7. Pressure is now held between test vessel and needle valve.
 - a. Watch gauge ('B' FIG 2) for pressure drop.

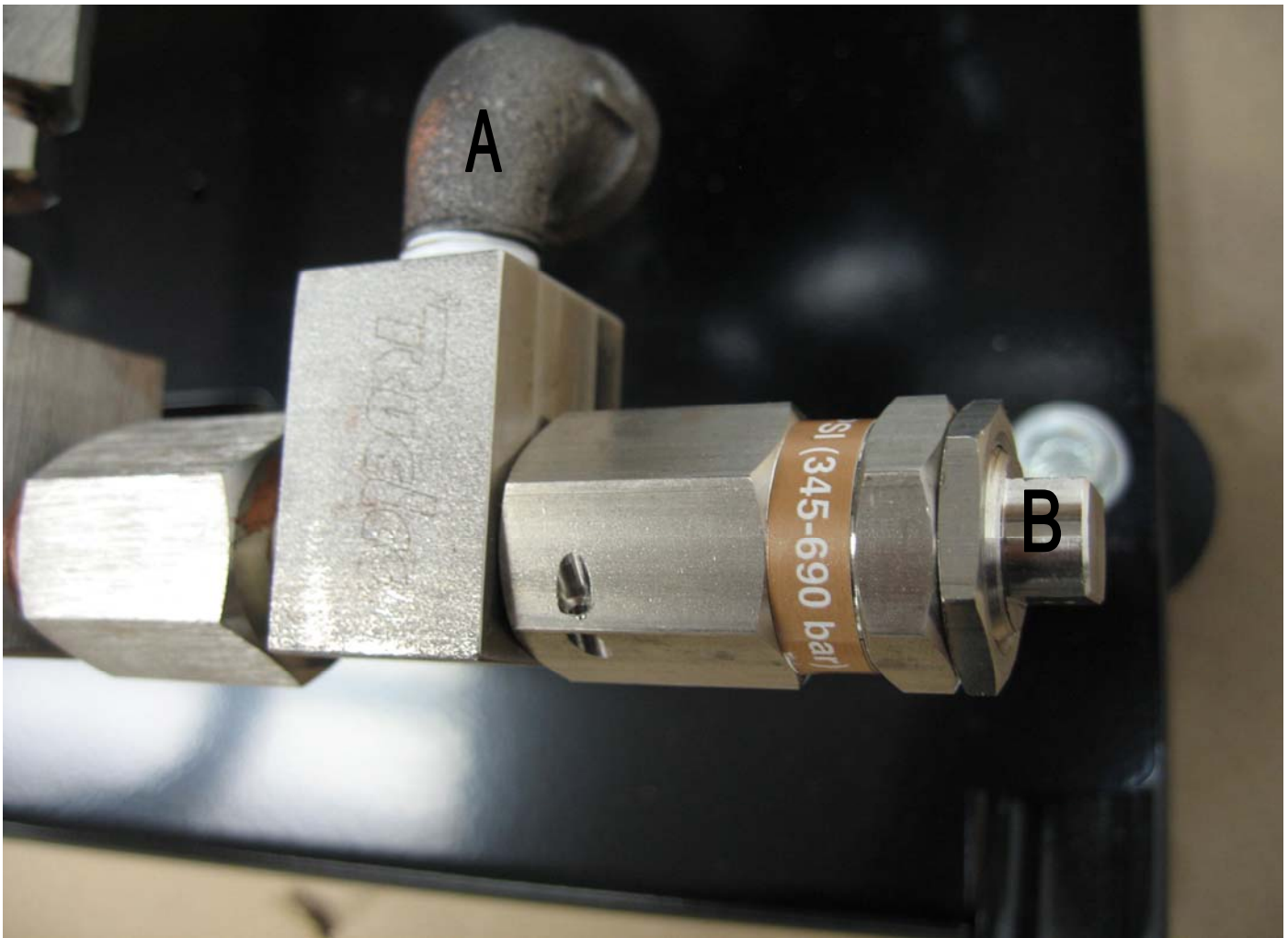


Fig. 4

Pressure relief valve is set at Wheeler-Rex to relieve pressure over 10,000psi.

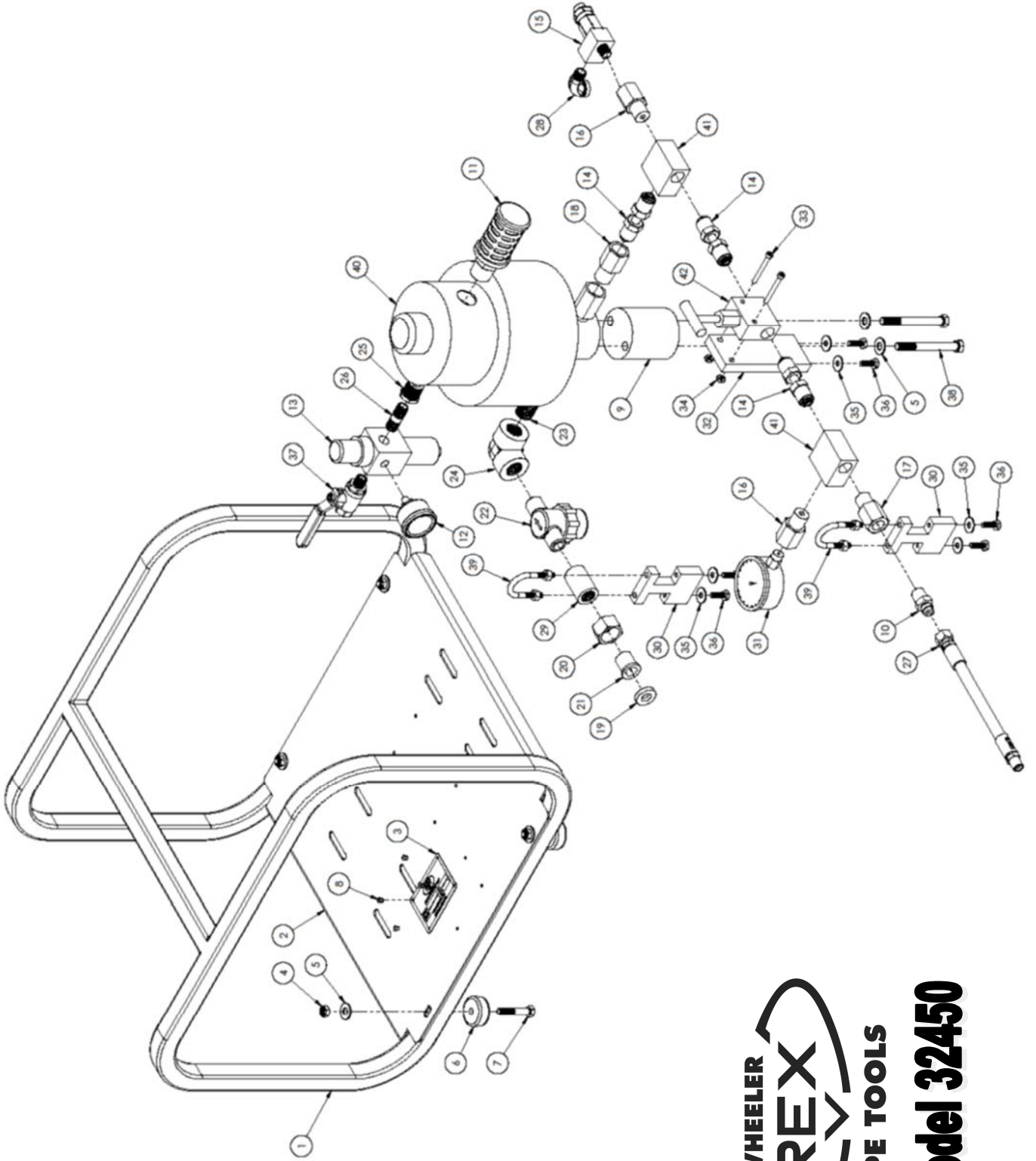
- A. Outgoing water pressure is controlled by incoming air pressure. See chart below:

Input Air Pressure (approx)	Output Water Pressure (approx)
20psi	1,500psi
30psi	3,000psi
40psi	4,500psi
50psi	6,000psi
75psi	8,000psi
90psi	10,000psi

- B. Pressure relief valve ('B' Fig 4), is "set" to relieve pressure over 10,000psi. If air pressure exceeds approximately 90psi, water will then "dump" out of pressure relief outlet ('A' Fig 4).
- C. Pump is intended for high pressure applications. Therefore any "low pressure" applications less than 1,500psi may not work.

Maintenance

- Lube Free Pump (maintenance free)
- 50/50/ antifreeze / water solution should be run through the pump after testing to avoid freezing parts, while it lubricates the check valves and needle valve.



WHEELER
REX
PIPE TOOLS
Model 32450

Item No	Part No	Description	Qty
1	700800	SMALL PUMP CAGE	1
2	700797	BASE PLATE	1
3	220874	NAME PLATE	1
4	275857	5/16-18 HEX NYLON INSERT LOCKNUTS	4
5	5110	3/8" FLAT WASHER	6
6	276443	RUBBER FOOT	4
7	275639	5/16-18 x 1 3/4" HHCS	4
8	275543	POP RIVET, STAR 4-2AAD	4
9	701410	PUMP SPACER	1
10	277206	10000 PSI HOSE ADAPTER	1
11	277214	SILENCER 3/4" NPTM	1
12	276444	GAUGE	1
13	276435	PRESSURE REGULATOR	1
14	701414	NUT & TUBE ASSEMBLY	3
15	277207	RELIEF VALVE	1
16	277211	H.P. 1/4" FNPT ADAPTER	2
17	277212	H.P. 3/8" FNPT ADAPTER	1
18	277217	H.P. 1/2" MNPT ADAPTER	1
19	275941	HOSE WASHER	1
20	275925	SWIVEL NUT	1
21	275918	SWIVEL ADAPTER	1
22	276420	STRAINER ASSEMBLY	1
23	275669	1/2 x CLOSE PIPE NIPPLE	1
24	275697	1/2" 3000LB FS SCR D 90 ELL	1
25	275670	1/2 x 1/4 FS SCR D HX BUSH	1
26	276465	1/4" x 1 1/2" PIPE NIPPLE	1
27	3918	HOSE	1
28	275664	1/4" NPT STREET ELL	1
29	275475	1/2" COUPLING	1
30	701412	INLET SPACER	2
31	277215	0-15000 PSI GAUGE	1
32	701411	VALVE SPACER	1
33	277219	#10-24 x 1 3/4" LONG	2
34	276543	#10-24 ESNA STOP NUT, THIN	2
35	276540	1/4" FLAT WASHER	6
36	560081	1/4-20 x 3/4" HHCS	6
37	277218	1/4" BRASS BALL VALVE	1
38	277210	3/8-24 X 3 1/2" LONG HHCS	2
39	277220	U-BOLT	2
40	277205	PNEUMATIC PUMP	1
41	277208	10000 PSI TEE	2
42	277209	10000 PSI NEEDLE VALVE	1



Wheeler-Rex • Ashtabula, Ohio

Tel: 800-321-7950 or 440-992-2925 • Fax: 440-992-2925

wheeler@wheelerrex.com • www.wheelerrex.com