

Hot Tap Operating Instructions

8100, 8200, 8300

8201, 8202, 8203, 8204, 8205, 8206, 8209



WHEELER-REX • ASHTABULA, OHIO USA
TEL: 800-321-7950 OR 440-998-2788 • FAX: 440-992-2925
WHEELER@WHEELERREX.COM • WWW.WHEELERREX.COM

INSTRUCTIONS FOR 3/4", 1", 1-1/4" DIAMETER TAPS



FIGURE 1

- A HOT TAP SPINDLE
- B HOT TAP SLEEVE
- C HOT TAP FEED SCREW
- D ADAPTER
- E ADAPTER FLUSH VALVE
- F RATCHET (NOT SHOWN)
- G SOCKET (NOT SHOWN)



FIGURE 2

1. Attach service saddle to the pipe according to the manufacturer's specs
2. Attach corporation stop to saddle. Ensure that it is tight and in the open position.



- FIGURE 3**
1. SELECT THE PROPER VALVE ADAPTER, (NPT, CTS AND BSPT CONNECTIONS AVAILABLE).
 2. SELECT THE PROPER SHELL CUTTER FOR THE PIPE MATERIAL TO BE CUT.
 - A. SHELL CUTTERS FOR STEEL, COPPER, DUCTILE IRON AND PLASTIC
 3. SELECT THE PROPER SHAFT OR COMBINATION OF SHAFTS TO ALLOW THE PROPER STROKE LENGTH TO CUT THROUGH THE PIPE AND TO BE RETRACTED ABOVE THE CORPORATION STOP AFTER THE CUT.

NOTE: NOT ALL ADAPTERS AND SHELL CUTTERS ARE SHOWN.



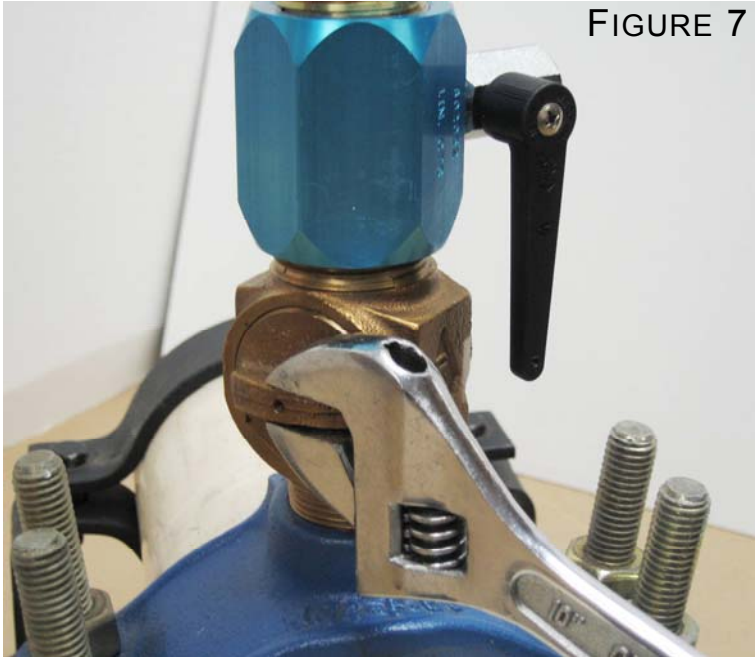
- FIGURE 4**
1. ATTACH THE PROPER VALVE ADAPTER TO THE CORPORATION STOP.
 2. ENSURE THAT THE ADAPTER'S FLUSH VALVE IS IN THE OPEN POSITION. THIS ALLOWS THE CHIPS TO BE FLUSHED OUT OF THE SYSTEM.



1. SLIDE HOT TAP SLEEVE ("B" FIG) DOWN TO ENGAGE THE THREADS OF THE HOT TAP FEED SCREW.
2. TURN HOT TAP SLEEVE CLOCKWISE UNTIL SHELL CUTTER TOUCHES PIPE.
3. USING THE SOCKET AND RATCHET, ROTATE THE HOT TAP SPINDLE ("A" FIG1) CLOCKWISE WHILE CONTINUALLY APPLYING PRESSURE. (BY TURNING THE HOT TAP SLEEVE ("B" FIG1)).
4. DRILL THROUGH THE PIPE UNTIL NO RESISTANCE IS FELT WHEN ADVANCING THE HOT TAP SLEEVE.



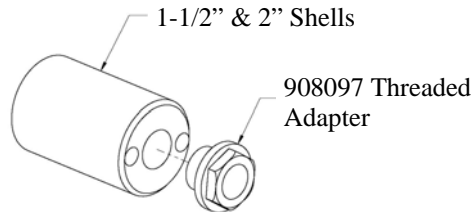
1. AFTER HOLE IS DRILLED THROUGH THE PIPE, RETRACT HOT TAP SLEEVE BY TURNING COUNTER-CLOCKWISE.
2. DISENGAGE THREADS AND PULL UP ON HOT TAP SLEEVE TO ENSURE PROPER CLEARANCE BETWEEN HOT TAP SHELL CUTTER AND CORPORATION STOP.



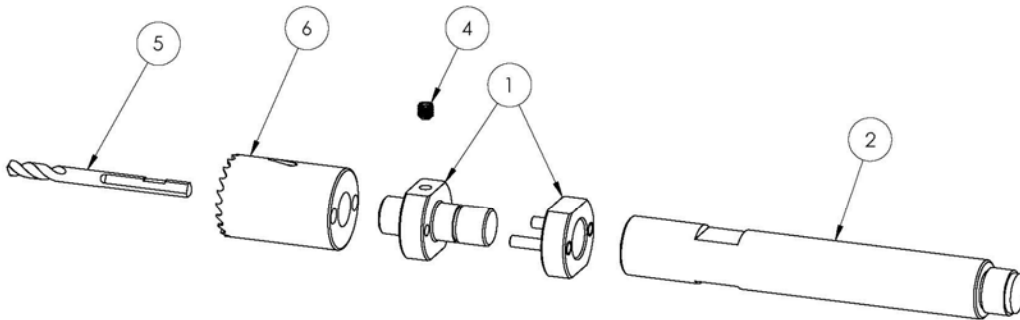
1. TURN ADAPTER VALVE TO THE “OFF” POSITION.
2. WITH A WRENCH, TURN THE CORPORATION STOP VALVE TO THE “OFF” POSITION.
3. REMOVE ADAPTER FROM CORPORATION STOP.

INSTRUCTIONS FOR 1-1/2" AND 2" DIAMETER TAPS

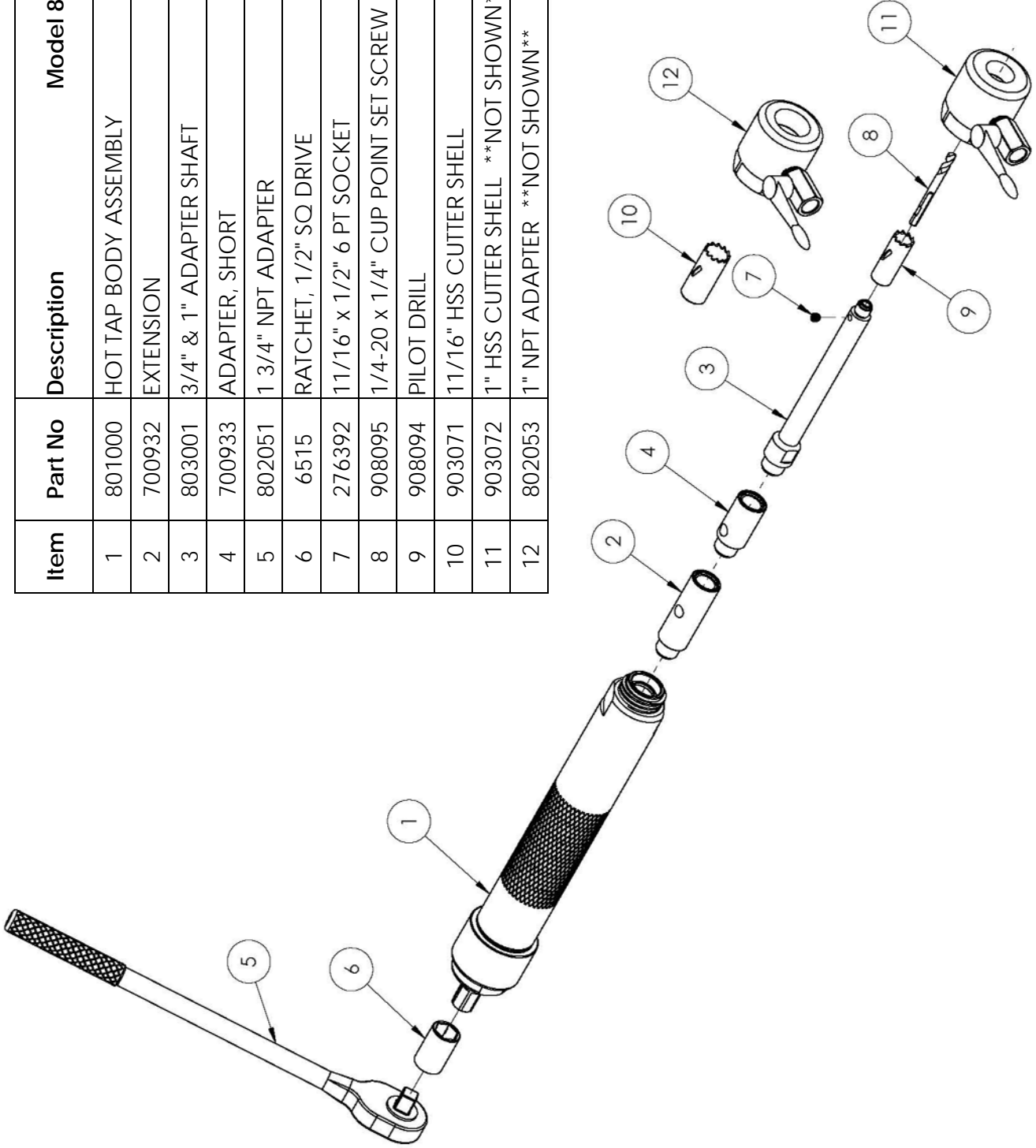
1. INSERT PILOT DRILL INTO ARBOR. BE SURE TO ALIGN FLAT FOR SET SCREW AND TIGHTEN WITH ALLEN KEY. IF YOU HAVE THIS STYLE 1-1/2" AND 2" ARBOR, REMOVE THREADED INSERT AND WASHER FROM SHELL CUTTER.
2. TURN SHELL CUTTER CLOCKWISE ONTO THREADED SHAFT OF ARBOR. BE SURE TO ALIGN HOLES IN ARBOR WITH HOLES IN SHELL CUTTER
3. SLIDE COLLER PINS THROUGH ARBOR AND INTO SHELL CUTTER.
4. TURN SHAFT CLOCKWISE ONTO OPPOSITE THREADED END OF ARBOR. USE WRENCHES ON "FLATS" OF BOTH ARBOR AND SHAFT TO TIGHTEN SHAFT AGAINST COLLAR.



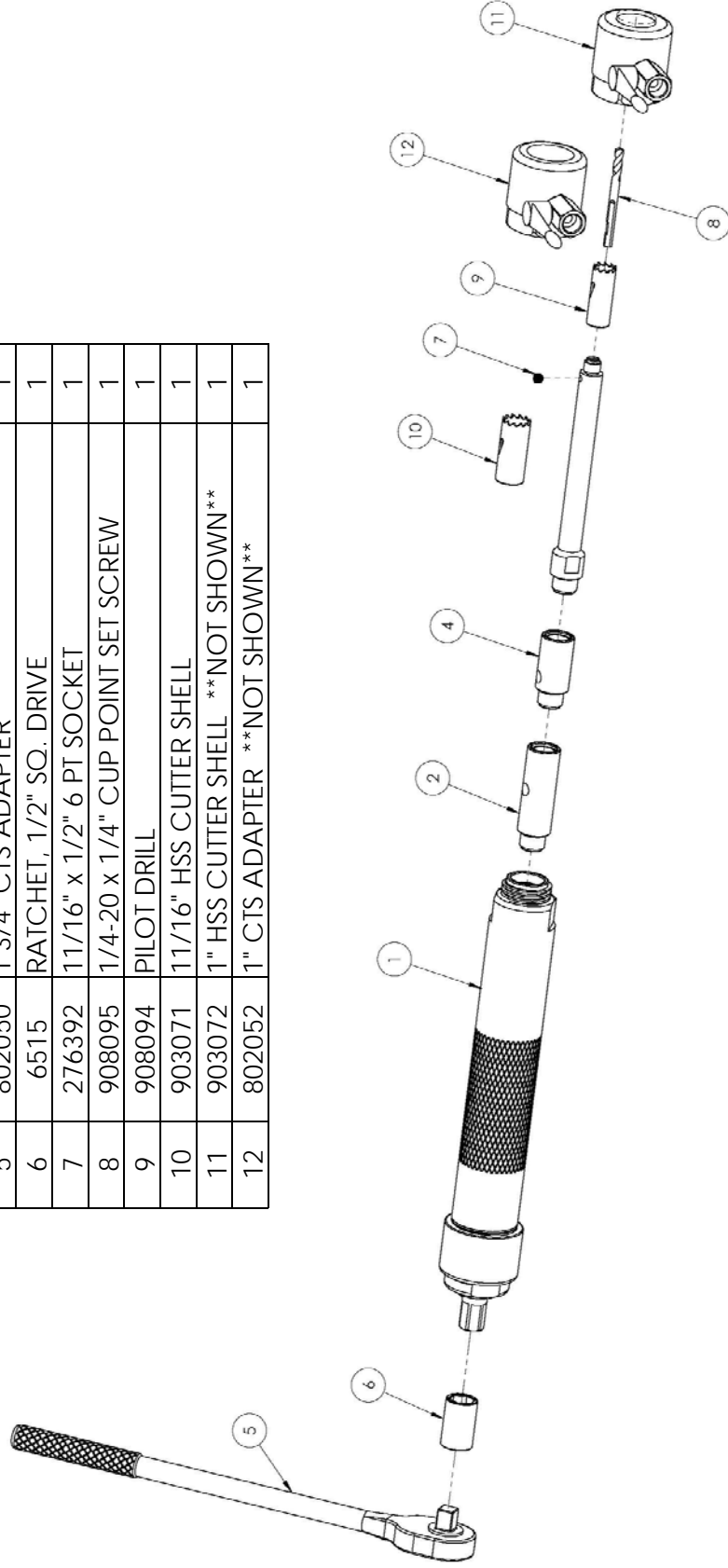
ITEM NO.	PART NUMBER	DESCRIPTION	QTY.
1	701420	1 1/2"-2" HOT TAP ARBOR ASSY.	1
2	701425	1 1/2" & 2" SHAFT	1
3	277226	3/16" x 1" Groove Dowel Pin	2
4	908095	1/4-20 x 1/4" Cup Point Set Screw	1
5	908094	PILOT DRILL	1
6	903074	1 3/8" HSS CUTTER SHELL	1



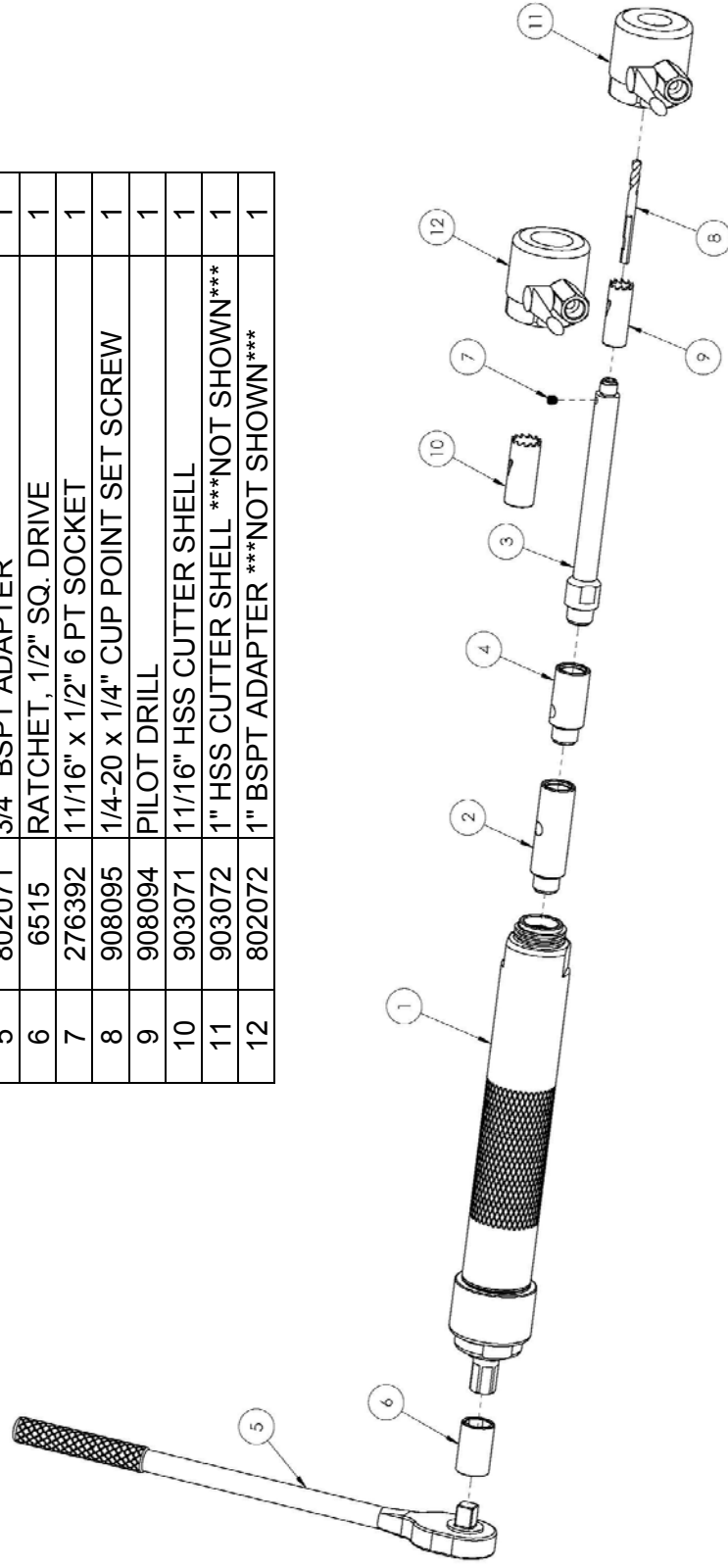
Item	Part No	Description	Model 8100	Qty
1	801000	HOT TAP BODY ASSEMBLY		1
2	700932	EXTENSION		1
3	803001	3/4" & 1" ADAPTER SHAFT		1
4	700933	ADAPTER, SHORT		1
5	802051	1 3/4" NPT ADAPTER		1
6	6515	RATCHET, 1/2" SQ DRIVE		1
7	276392	11/16" x 1/2" 6 PT SOCKET		1
8	908095	1/4-20 x 1/4" CUP POINT SET SCREW		1
9	908094	PILOT DRILL		1
10	903071	11/16" HSS CUTTER SHELL		1
11	903072	1" HSS CUTTER SHELL **NOT SHOWN**		1
12	802053	1" NPT ADAPTER **NOT SHOWN**		1



Item	Part No	Description	Model 8200	Qty
1	801000	HOT TAP BODY ASSEMBLY		1
2	700932	EXTENSION		1
3	803001	3/4" & 1" ADAPTER SHAFT		1
4	700933	ADAPTER, SHORT		1
5	802050	1 3/4" CTS ADAPTER		1
6	6515	RATCHET, 1/2" SQ. DRIVE		1
7	276392	11/16" x 1/2" 6 PT SOCKET		1
8	908095	1/4-20 x 1/4" CUP POINT SET SCREW		1
9	908094	PILOT DRILL		1
10	903071	11/16" HSS CUTTER SHELL		1
11	903072	1" HSS CUTTER SHELL **NOT SHOWN**		1
12	802052	1" CTS ADAPTER **NOT SHOWN**		1

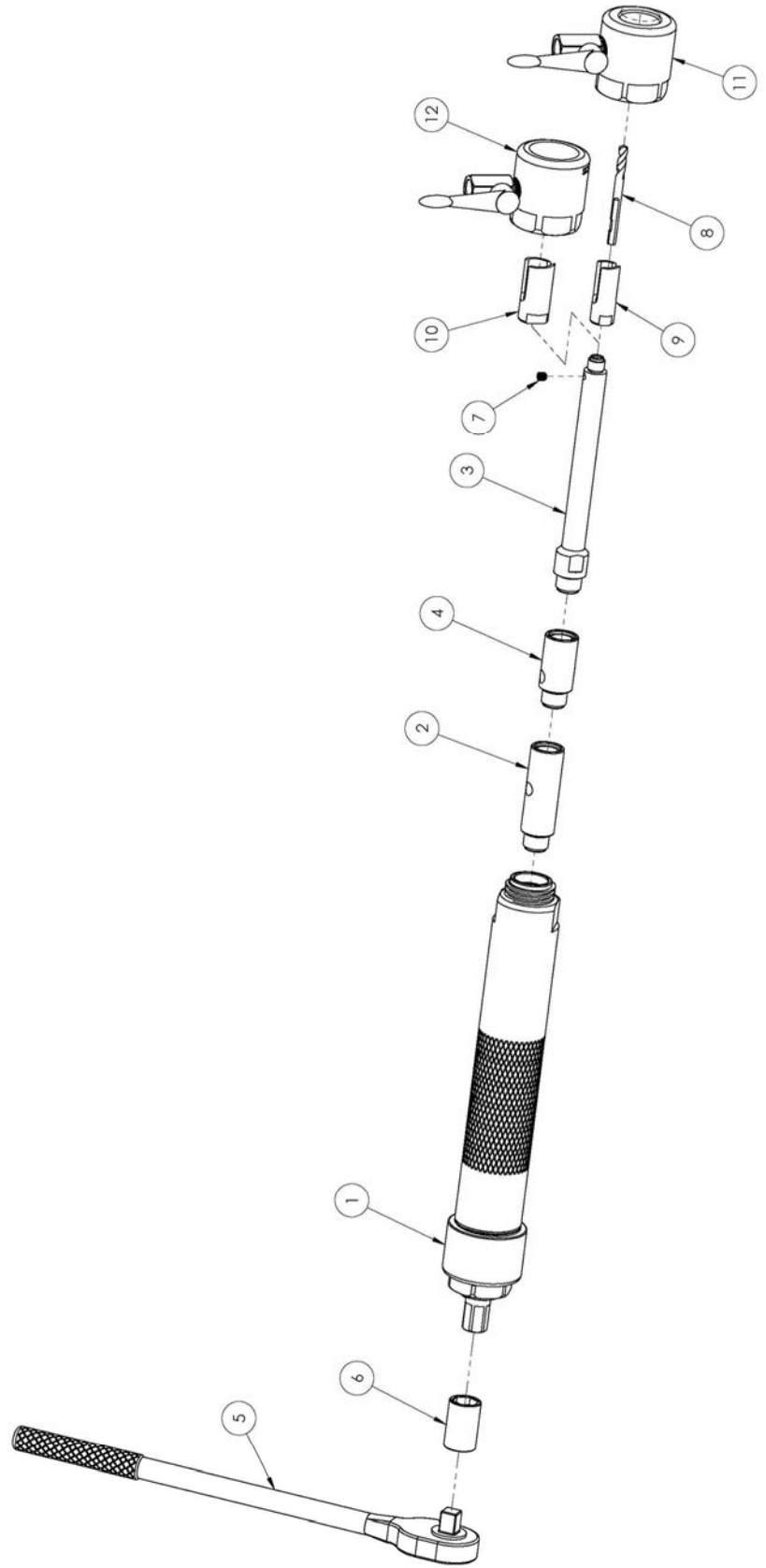


Item	Part No	Description	Qty
1	801000	HOT TAP BODY ASSEMBLY	1
2	700932	EXTENSION	1
3	803001	3/4" & 1" ADAPTER SHAFT	1
4	700933	ADAPTER, SHORT	1
5	802071	3/4" BSPT ADAPTER	1
6	6515	RATCHET, 1/2" SQ. DRIVE	1
7	276392	11/16" x 1/2" 6 PT SOCKET	1
8	908095	1/4-20 x 1/4" CUP POINT SET SCREW	1
9	908094	PILOT DRILL	1
10	903071	11/16" HSS CUTTER SHELL	1
11	903072	1" HSS CUTTER SHELL ***NOT SHOWN***	1
12	802072	1" BSPT ADAPTER ***NOT SHOWN***	1



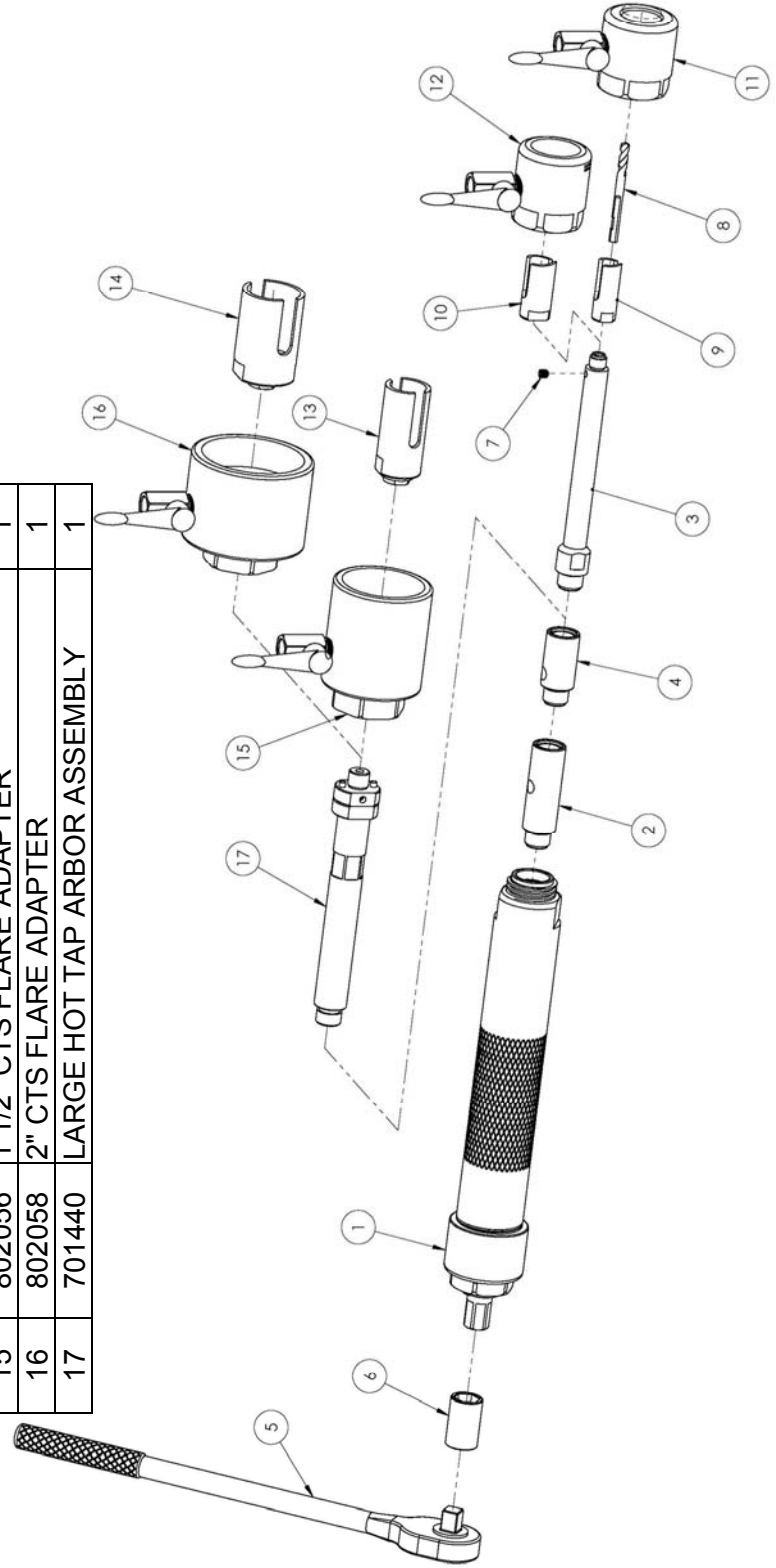
Part No: 8201
3/4" to 1" CTS for Plastic

Item	Part No	Description	Model 8201	Qty
1	801000	HOT TAP BODY ASSEMBLY		1
2	700932	EXTENSION		1
3	803001	3/4" & 1" ADAPTER SHAFT		1
4	700933	ADAPTER, SHORT		1
5	6515	RATCHET, 1/2" SQ. DRIVE MALE		1
6	276392	11/16" x 1/2" 6 PT SOCKET		1
7	908095	1/4-20 x 1/4" CUP POINT SET SCREW		1
8	908094	PILOT DRILL		1
9	5800	3/4" CUTTER SHELL		1
10	5801	1" CUTTER SHELL		1
11	802050	3/4" CTS VALVE ADAPTER		1
12	802052	1" CTS VALVE ADAPTER		1



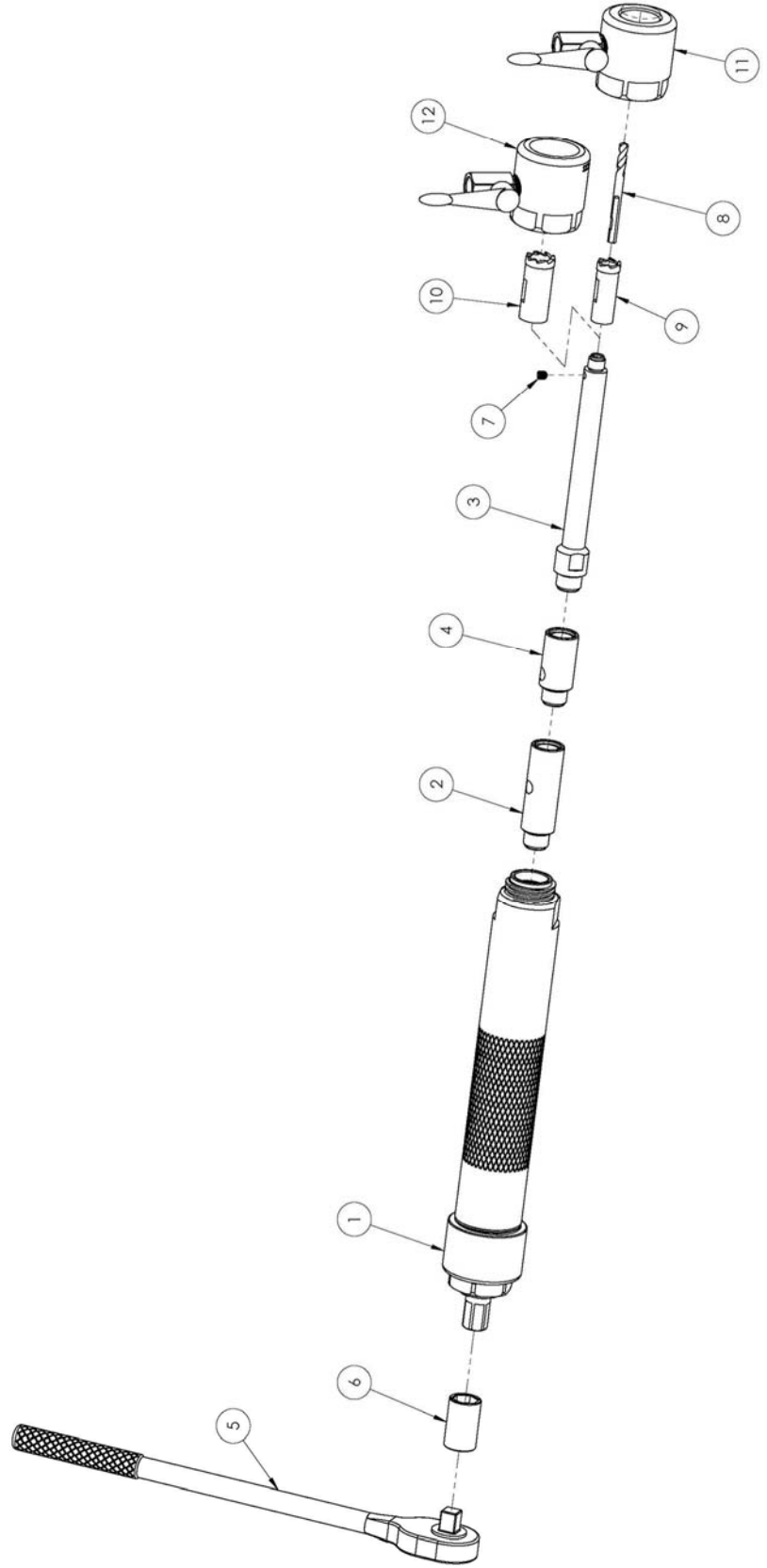
Part No: 8202
3/4" to 2" CTS for Plastic

Item	Part No	Description	Model 8202	Qty
1	801000	HOT TAP BODY ASSEMBLY		1
2	700932	EXTENSION		1
3	803001	3/4" & 1" ADAPTER SHAFT		1
4	700933	ADAPTER, SHORT		1
5	6515	RATCHET, 1/2" SQ. DRIVE MALE		1
6	276392	11/16" x 1/2" 6 PT SOCKET		1
7	908095	1/4-20 x 1/4" CUP POINT SET SCREW		1
8	908094	PILOT DRILL		1
9	5800	3/4" CUTTER SHELL		1
10	5801	1" CUTTER SHELL		1
11	802050	3/4" CTS VALVE ADAPTER		1
12	802052	1" CTS VALVE ADAPTER		1
13	802084	1 1/2" SHELL CUTTER		1
14	802085	2" PLASTIC SHELL CUTTER		1
15	802056	1 1/2" CTS FLARE ADAPTER		1
16	802058	2" CTS FLARE ADAPTER		1
17	701440	LARGE HOT TAP ARBOR ASSEMBLY		1



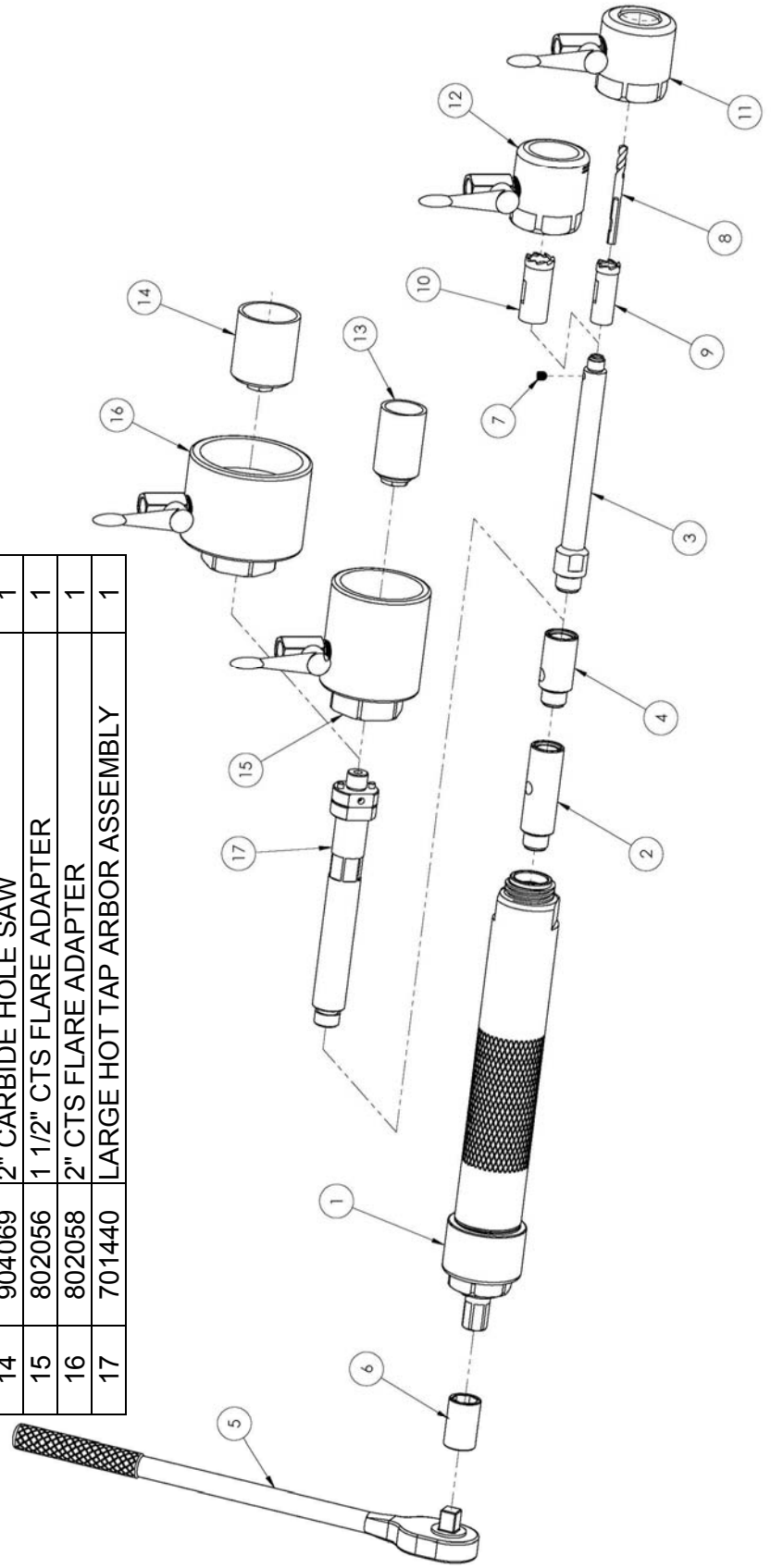
Part No: 8203
3/4" to 1" CTS for Ductile
Iron and Cast Iron

Item	Part No	Description	Model 8203	Qty
1	801000	HOT TAP BODY ASSEMBLY		1
2	700932	EXTENSION		1
3	803001	3/4" & 1" ADAPTER SHAFT		1
4	700933	ADAPTER, SHORT		1
5	6515	RATCHET, 1/2" SQ. DRIVE MALE		1
6	276392	11/16" x 1/2" 6 PT SOCKET		1
7	908095	1/4-20 x 1/4" CUP POINT SET SCREW		1
8	908094	PILOT DRILL		1
9	904065	3/4" CARBIDE TIP SHELL FOR DI		1
10	904066	1" CARBIDE TIP SHELL FOR DI		1
11	802050	3/4" CTS VALVE ADAPTER		1
12	802052	1" CTS VALVE ADAPTER		1



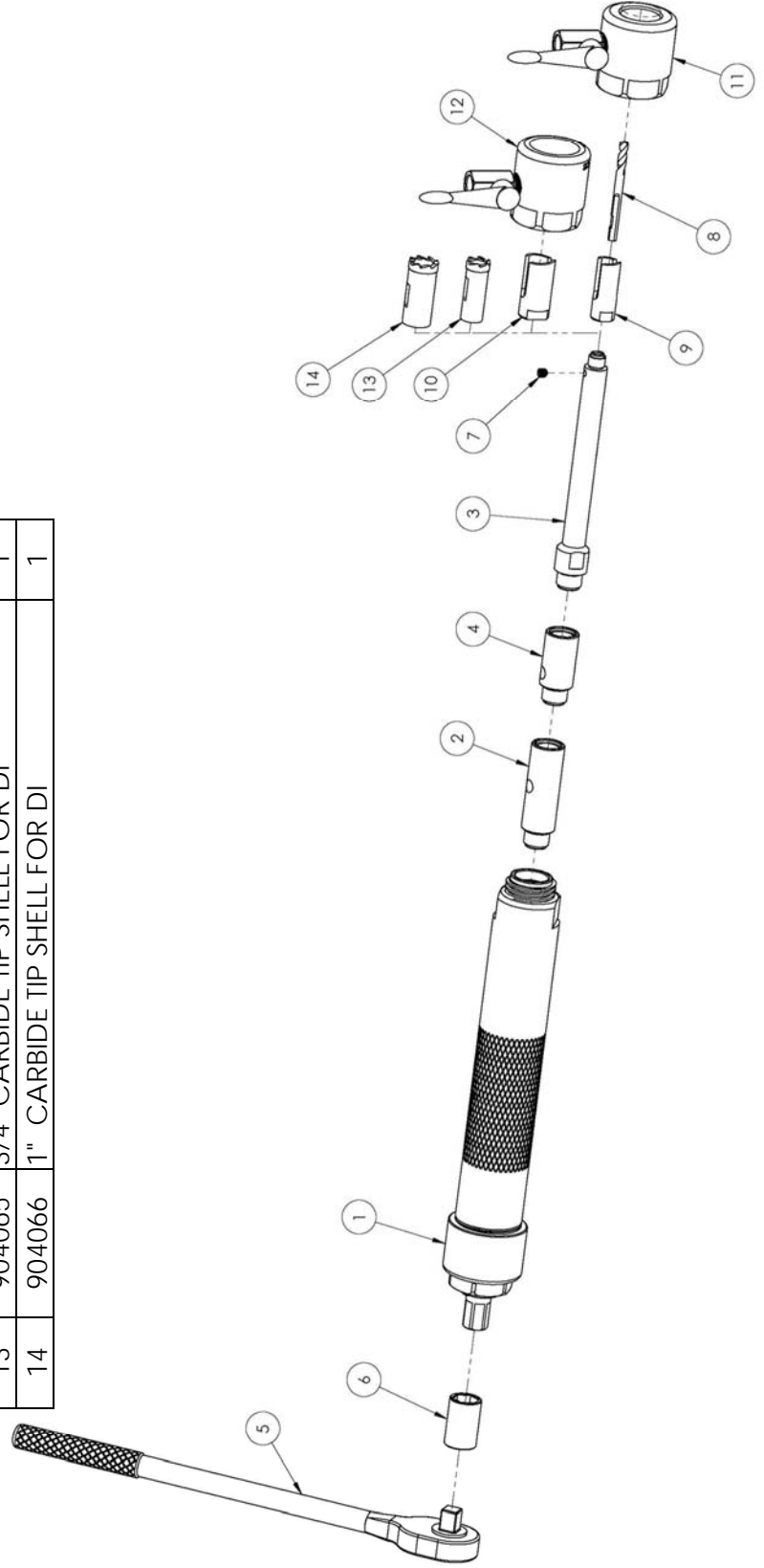
Part No: 8204
3/4" to 2" CTS for Ductile
Iron and Cast Iron

Item	Part No	Description	Model 8204	Qty
1	801000	HOT TAP BODY ASSEMBLY		1
2	700932	EXTENSION		1
3	803001	3/4" & 1" ADAPTER SHAFT		1
4	700933	ADAPTER, SHORT		1
5	6515	RATCHET, 1/2" SQ. DRIVE MALE		1
6	276392	11/16" x 1/2" 6 PT SOCKET		1
7	908095	1/4-20 x 1/4" CUP POINT SET SCREW		1
8	908094	PILOT DRILL		1
9	904065	3/4" CARBIDE TIP SHELL FOR DI		1
10	904066	1" CARBIDE TIP SHELL FOR DI		1
11	802050	3/4" CTS VALVE ADAPTER		1
12	802052	1" CTS VALVE ADAPTER		1
13	904068	1 1/2" CARBIDE HOLE SAW		1
14	904069	2" CARBIDE HOLE SAW		1
15	802056	1 1/2" CTS FLARE ADAPTER		1
16	802058	2" CTS FLARE ADAPTER		1
17	701440	LARGE HOT TAP ARBOR ASSEMBLY		1



Part No: 8205
3/4" to 1" CTS for Plastic,
Ductile Iron and Cast Iron

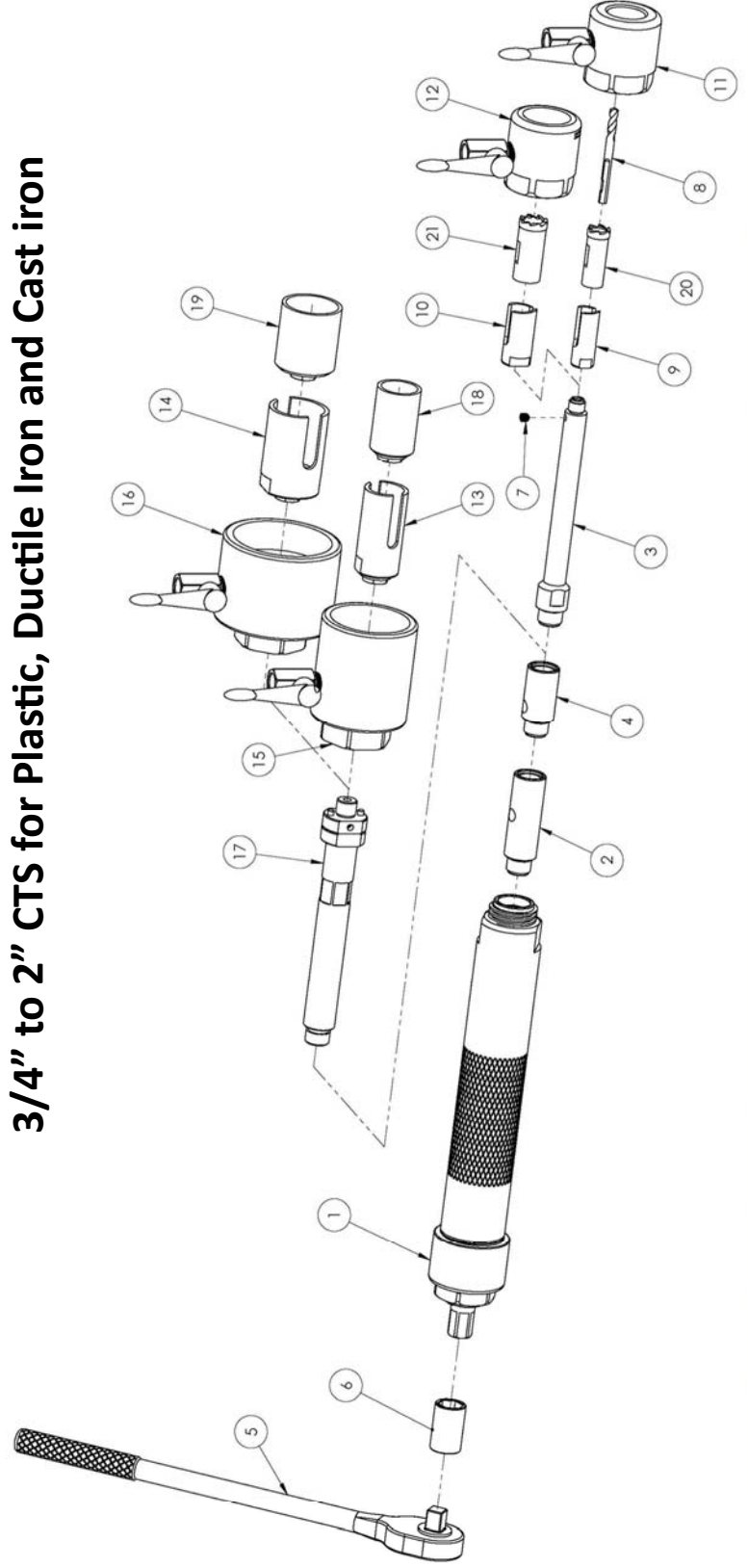
Item	Part No	Description	Model 8205	Qty
1	801000	HOT TAP BODY ASSEMBLY		1
2	700932	EXTENSION		1
3	803001	3/4" & 1" ADAPTER SHAFT		1
4	700933	ADAPTER, SHORT		1
5	6515	RATCHET, 1/2" SQ. DRIVE MALE		1
6	276392	11/16" x 1/2" 6 PT SOCKET		1
7	908095	1/4-20 x 1/4" CUP POINT SET SCREW		1
8	908094	PILOT DRILL		1
9	5800	3/4" CUTTER SHELL		1
10	5801	1" CUTTER SHELL		1
11	802050	3/4" CTS VALVE ADAPTER		1
12	802052	1" CTS VALVE ADAPTER		1
13	904065	3/4" CARBIDE TIP SHELL FOR DI		1
14	904066	1" CARBIDE TIP SHELL FOR DI		1

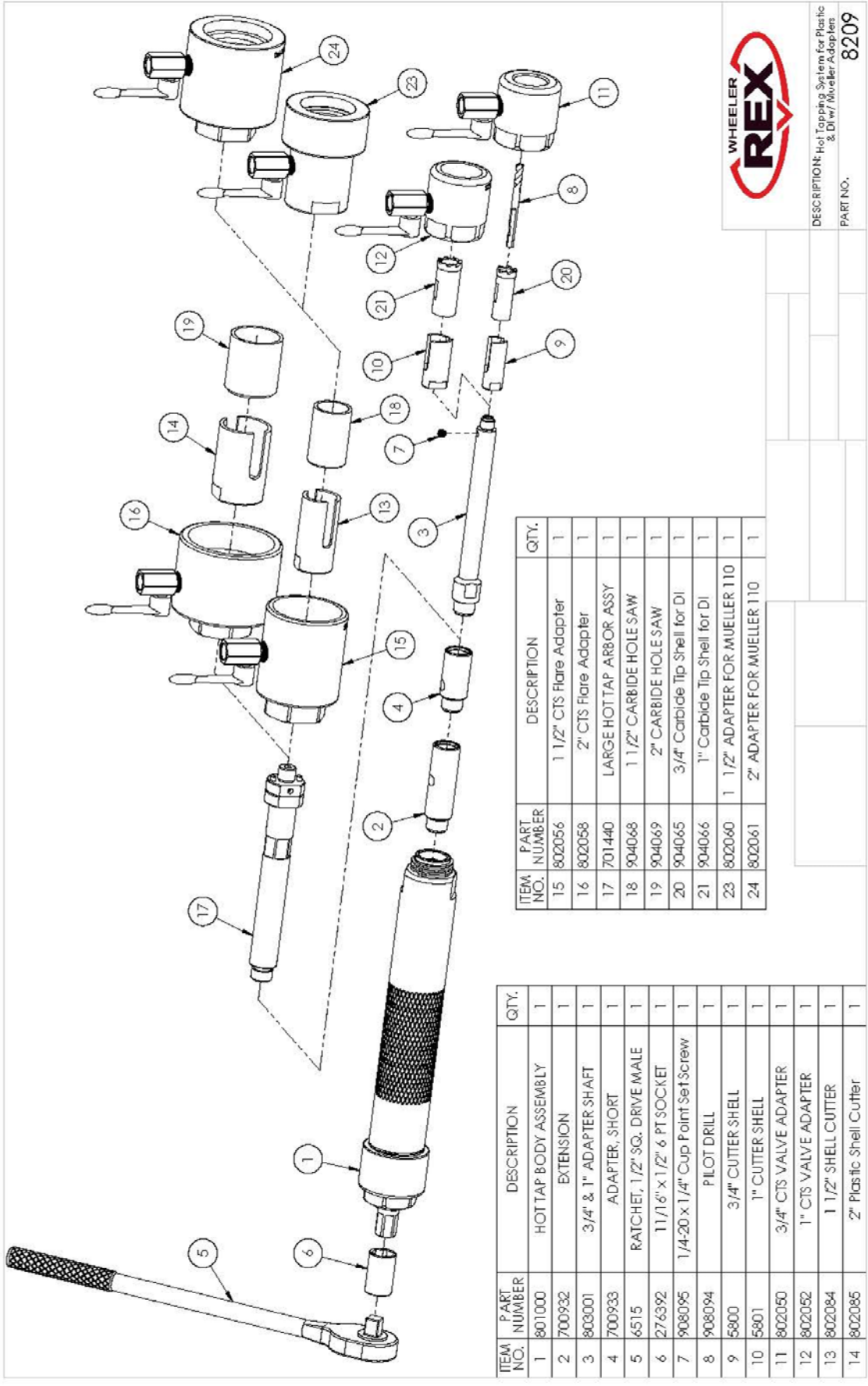


Item	Part No	Description	Model 8206	Qty
11	802050	3/4" CTS VALVE ADAPTER		1
12	802052	1" CTS VALVE ADAPTER		1
13	802084	1 1/2" SHELL CUTTER		1
14	802085	2" Plastic Shell Cutter		1
15	802056	1 1/2" CTS Flare Adapter		1
16	802058	2" CTS Flare Adapter		1
17	701440	LARGE HOT TAP ARBOR ASSY		1
18	904068	1 1/2" CARBIDE HOLE SAW		1
19	904069	2" CARBIDE HOLE SAW		1
20	904065	3/4" Carbide Tip Shell for DI		1
21	904066	1" Carbide Tip Shell for DI		1

Item	Part No	Description	Model 8206	Qty
1	801000	HOT TAP BODY ASSEMBLY		1
2	700932	EXTENSION		1
3	803001	3/4" & 1" ADAPTER SHAFT		1
4	700933	ADAPTER, SHORT		1
5	6515	RATCHET, 1/2" SQ. DRIVE MALE		1
6	276392	11/16" x 1/2" 6 PT SOCKET		1
7	908095	1/4-20 x 1/4" Cup Point Set Screw		1
8	908094	PILOT DRILL		1
9	5800	3/4" CUTTER SHELL		1
10	5801	1" CUTTER SHELL		1

Part No: 8206
3/4" to 2" CTS for Plastic, Ductile Iron and Cast iron



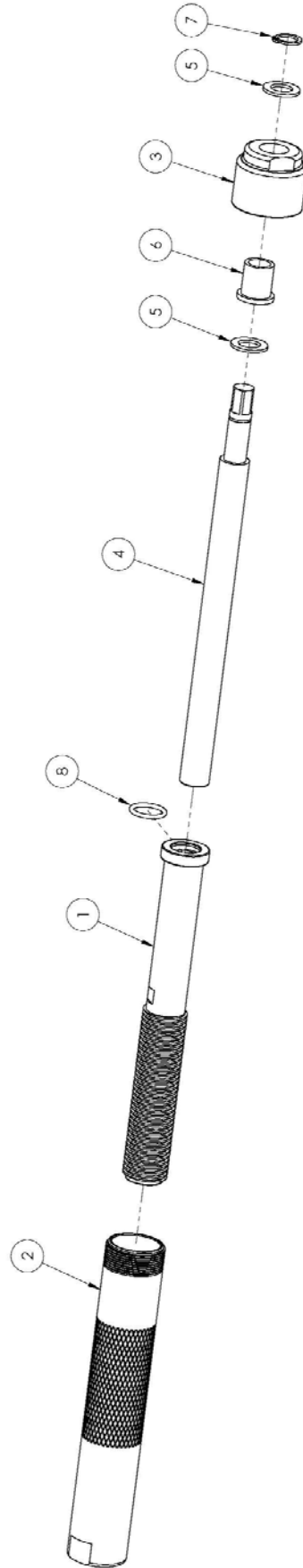


DESCRIPTION: Hot Tapping System for Plastic & DI w/ Mueller Adapters
 PART NO. 8209

ITEM NO.	PART NUMBER	DESCRIPTION	QTY.
15	802056	1 1/2" CTS Flare Adapter	1
16	802058	2" CTS Flare Adapter	1
17	701440	LARGE HOTTAP ARBOR ASSY	1
18	904068	1 1/2" CARBIDE HOLE SAW	1
19	904069	2" CARBIDE HOLE SAW	1
20	904065	3/4" Carbide Tip Shell for DI	1
21	904066	1" Carbide Tip Shell for DI	1
23	802060	1 1/2" ADAPTER FOR MUELLER 110	1
24	802061	2" ADAPTER FOR MUELLER 110	1

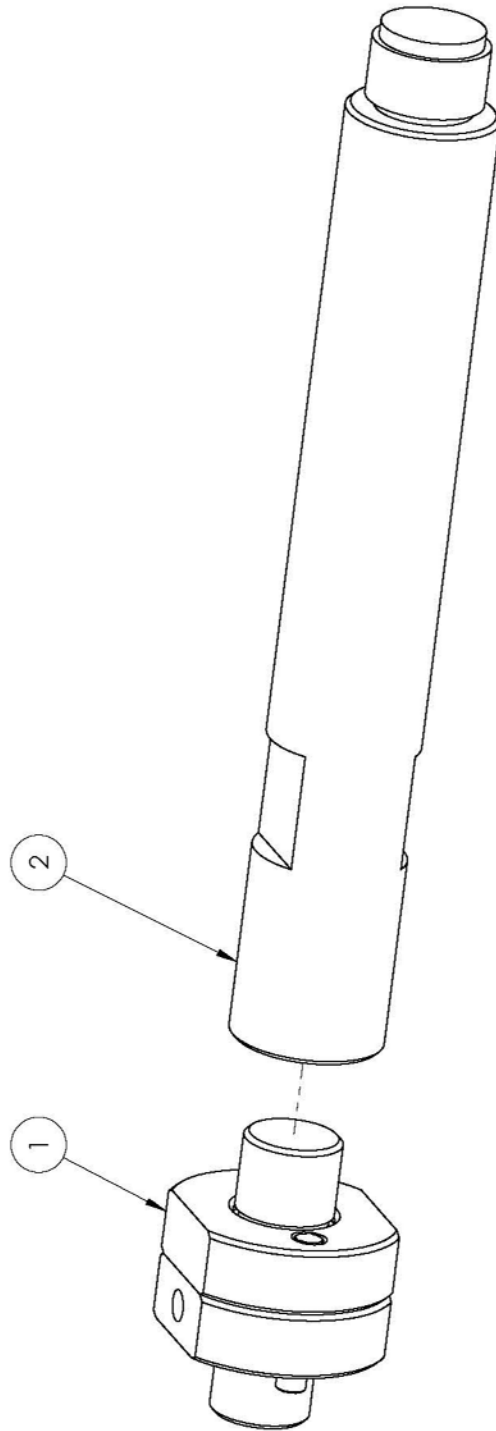
ITEM NO.	PART NUMBER	DESCRIPTION	QTY.
1	801000	HOTTAP BODY ASSEMBLY	1
2	700932	EXTENSION	1
3	803001	3/4" & 1" ADAPTER-SHAFT	1
4	700933	ADAPTER, SHORT	1
5	6515	RATCHET, 1/2" SQ. DRIVE MALE	1
6	276392	11/16" x 1/2" 6 PT SOCKET	1
7	908095	1/4-20 x 1/4" Cup Point Set Screw	1
8	908094	PILOT DRILL	1
9	5900	3/4" CUTTER SHELL	1
10	5901	1" CUTTER SHELL	1
11	802050	3/4" CTS VALVE ADAPTER	1
12	802052	1" CTS VALVE ADAPTER	1
13	802084	1 1/2" SHELL CUTTER	1
14	802085	2" Plastic Shell Cutter	1

801000 HOT TAP BODY ASSEMBLY			
ITEM NO.	PART NUMBER	DESCRIPTION	QTY.
1	801012	HOT TAP FEED SCREW	1
2	801011	HOT TAP SLEEVE	1
3	801013	HOT TAP CAP END	1
4	801010	HOT TAP SPINDLE	1
5	276570	THRUST WASHER	2
6	276394	FLANGE BEARING	1
7	275043	Retaining Ring	1
8	276393	O-RING	1



701440 LARGE HOT TAP ARBOR ASSEMBLY

ITEM NO.	PART NUMBER	DESCRIPTION	QTY.
1	701420	1 1/2" - 2" HOT TAP ARBOR ASSY.	1
2	701425	1 1/2" & 2" SHAFT	1



OUTLET SIDE
CAN HAVE A VARIETY OF END CONNECTIONS:

- MUELLER 110 COMPRESSION CONNECTION
- MUELLER INSTA-TITE CONNECTION
- COPPER FLARE
- INSIDE IRON PIPE
- OUTSIDE IRON PIPE
- INCREASING IRON PIPE
- MUELLER COUPLING THREADS

NPT
CONNECTION



COMPRESSION
CONNECTION



COPPER FLARE
CONNECTION



INLET SIDE

TYPICALLY AN AWWA TAPER THREAD
(ie MUELLER 'CC' THREAD) ATTACHES EI-
THER TO A SERVICE SADDLE OR TAPPED
DIRECTLY INTO A WATER MAIN LINE
(OTHER INLET CONNECTIONS AVAILABLE)

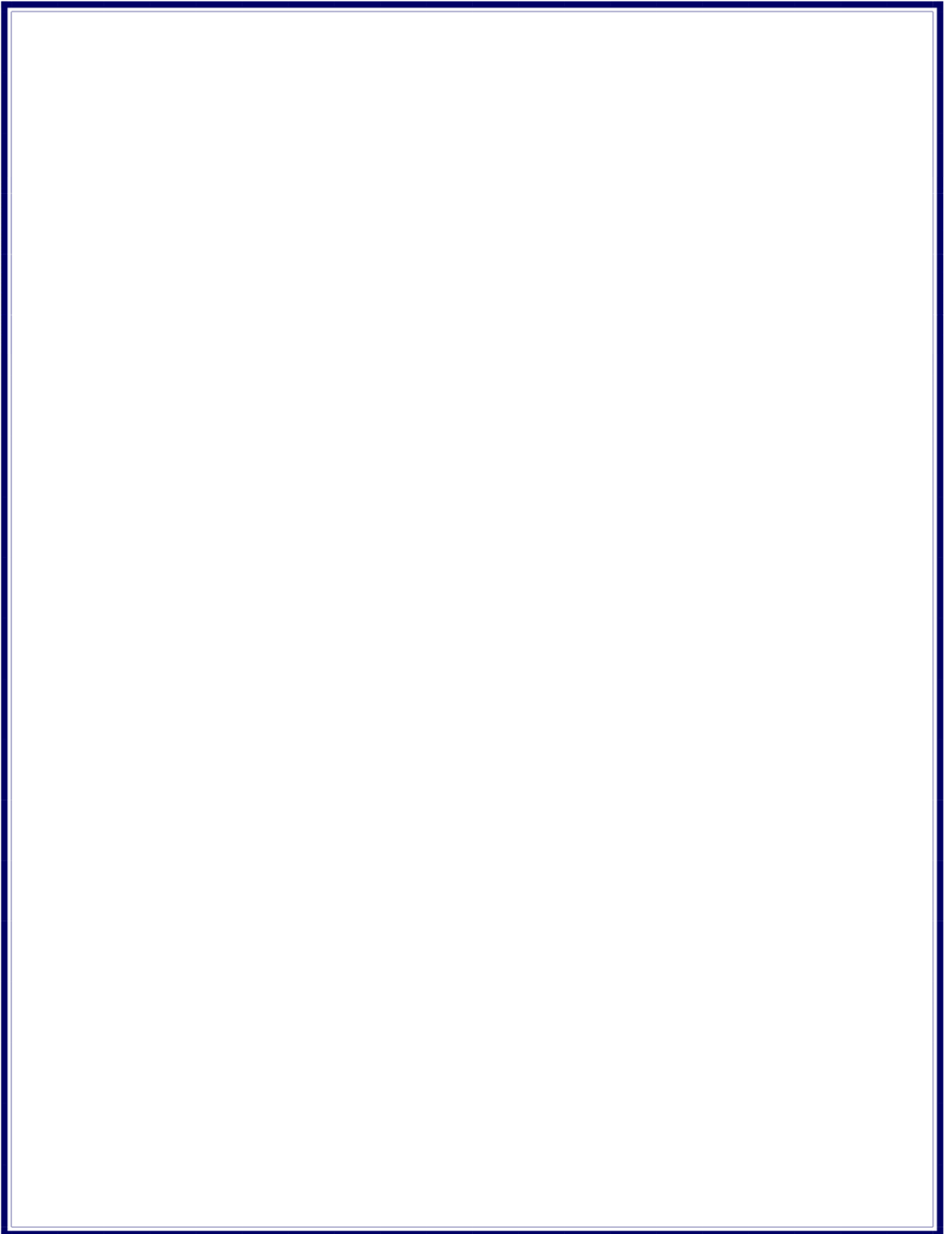
SERVICE SADDLE



WATER FLOW

- **Corporation Stops & Adapters**

- Mueller $\frac{3}{4}$ " Copper Flare & 110 Compression Conn. CTS (Corp Stops) have the same threads.
- Mueller 1" Copper Flare & 110 Compression Conn. CTS (Corp Stops) have the same threads.
- $\frac{3}{4}$ " Mueller 110 Compression Conn. CTS (Corp Stop)
Use Wheeler #802050 $\frac{3}{4}$ " CTS Flare Adapter
- $\frac{3}{4}$ " Mueller Copper Flare (Corp Stop)
Use Wheeler #802050 $\frac{3}{4}$ " CTS Flare Adapter
- 1" Mueller 110 Compression Conn. CTS (Corp Stop)
Use Wheeler #802052 1" CTS Flare Adapter
- 1" Mueller Copper Flare (Corp Stop)
Use Wheeler #802052 1" CTS Flare Adapter
- 1 $\frac{1}{2}$ " Mueller 110 Compression Conn. CTS (Corp Stop)
Use Wheeler #802060 1- $\frac{1}{2}$ " Mueller Adapter
- 1 $\frac{1}{2}$ " Mueller Copper Flare (Corp Stop)
Use Wheeler #802056 1- $\frac{1}{2}$ " CTS Flare Adapter
- 2" Mueller 110 Compression Conn. CTS (Corp Stop)
Use Wheeler #802061 2" Mueller Adapter
- 2" Mueller Copper Flare (Corp Stop)
Use Wheeler #802058 2" CTS Flare Adapter





Wheeler-Rex • Ashtabula, Ohio
Tel: 800-321-7950 or 440-998-2788 • Fax: 440-992-2925
wheeler@wheelerrex.com • www.wheelerrex.com