

■ Tray Support

If the tray becomes a bit loose, or if you need to change the angle of the legs, you can do so with the tray support. Loosen the adjustment bolt shown in Fig. 5, move the tray support in the appropriate direction as shown by the arrows, and then retighten the bolt.

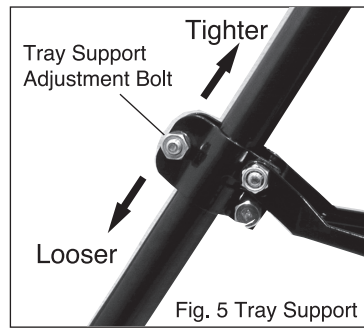


Fig. 5 Tray Support

■ Jack Screw

If you use the bending grooves, etc., and the vice starts to lift up, you can stabilize and fix it in place by placing a pipe of sufficient length between the jack screw and a firm, roof beam.

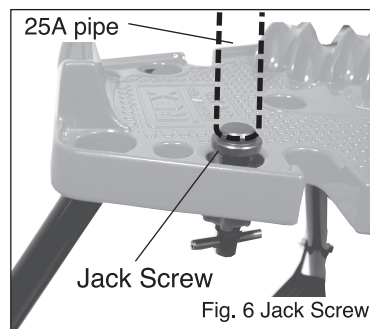


Fig. 6 Jack Screw

⚠ WARNING

- Ensure the adjustment bolt is firmly fixed in position. If it is too loose, the vice could become unstable, which could lead to injury or an accident.

⚠ WARNING

- Before use, ensure that the pipe is firmly in place. If the pipe comes loose while using the vise, the vise may overturn, which could lead to injury or an accident. Make sure you use a place where you can fix the pipe in position securely without it slipping.

■ For Safe Operation

⚠ WARNING

① Use only in a stable location

- Make sure the feet are in a stable position which allows the vise to keep its balance.
- If it overturns, it could result in an injury.

② Check for damage

- Before use, make sure there is no damage to any of the working parts and that the vise can fully operate in a normal way and perform all its prescribed functions correctly.

③ Be careful not to get your fingers, etc. caught when setting up the tool tray

- When setting up the tool tray, folding up the stand to carry it, or when putting it away for storage, be careful not to get your fingers caught in the tray.

④ Make sure you use the leg chain to fix the legs in position when carrying the stand

- Use the leg chain without fail!
- Using excessive force on the leg chain could break the links resulting in injury or an accident.

⑤ Ensure the workpiece is securely fixed in position before starting work

- If the chain is loose, the pipe could fall off, which could lead to a very dangerous situation.

⑥ Be careful the stand does not fall over.

- Should it be necessary to apply considerable force to the vice stand, be sure to remove the rubber pads on the grommets and fix the stand in position with an anchor or similar.
- If the stand falls over it could lead to injury or an accident

⑦ Store carefully when not in use

- Store in a dry, locked room, out of the reach of children

⑧ Always ask a specialist to carry out any repairs or an overhaul

- REX products are designed to comply with high standards of safety. Never try to dismantle or repair them yourself.
- For any repairs, always contact the place where you purchased the product, or your nearest REX sales office.



WHEELER-REX

REX International U.S.A., Inc.
P.O. Box 688, 3744 Jefferson Road, Ashtabula, OH44005
Ph: 440 - 998 - 2788 · Fax.: 440 - 992 - 2925
Toll Free: 1 - 800 - 321 - 7950

Website: www.wheelerrex.com

- Printed on recycled paper.
- Product specifications subject to change without notice.

4160-Wheeler
9A670-W5
1803R0000

REX

Pipe Tools

TRIPOD VISE STAND 4160

OPERATION MANUAL



Before using the stand make sure you familiarize yourself with the sections entitled, 'Names of parts, Standard Specifications, Standard Accessories,' and 'For Safe Operation,' etc. as shown below. Take care of these instructions and keep them close at hand so that you can refer to them at any time.

■ Names of parts, Standard Specifications, Standard Accessories

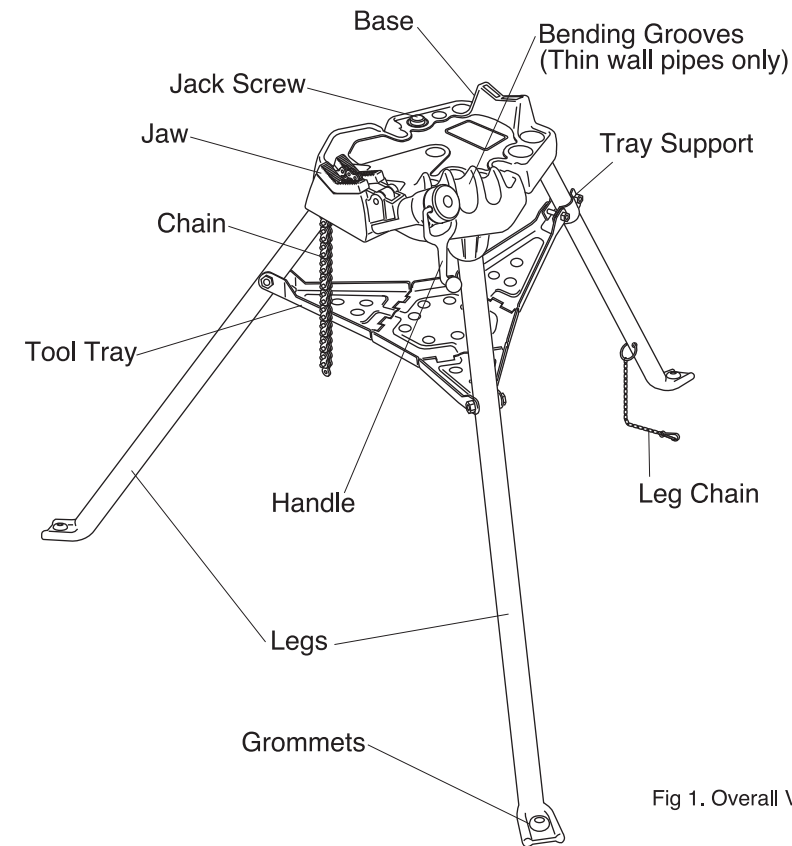


Fig 1. Overall View

Model	4160
Name	TRIPOD VISE STAND
Applicable Pipe Diam.	1/8 - 6" (8A - 150A)
Applicable Pipes	Steel pipe
Size (mm)	1198 x 1134 x 960
Weight (kg)	19.6
Additional features	Bending Grooves (Thin wall pipes only) Pipe Support Tool tray

Table 1. Standard specifications and attachments.

■ Setting up

When you set up the stand, open the legs and push the tool tray down until it locks into position.

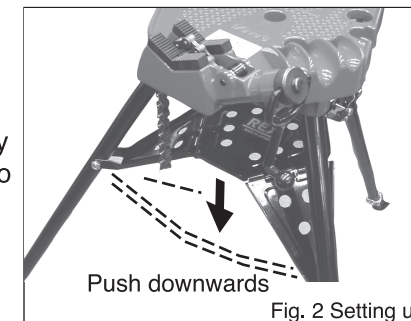


Fig. 2 Setting up

■ Carrying the stand

Whenever you carry the stand, fix the legs in position with the leg chain so that the legs don't suddenly open up.

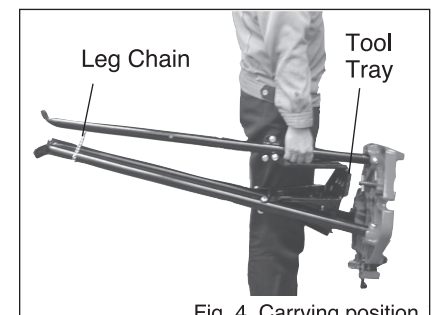


Fig. 4. Carrying position

■ Storage

When you have finished using the stand, turn it upside down and push down on the tray to return it to its closed position.

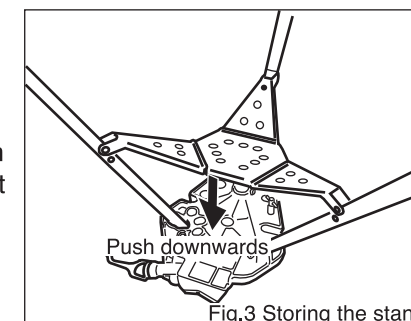
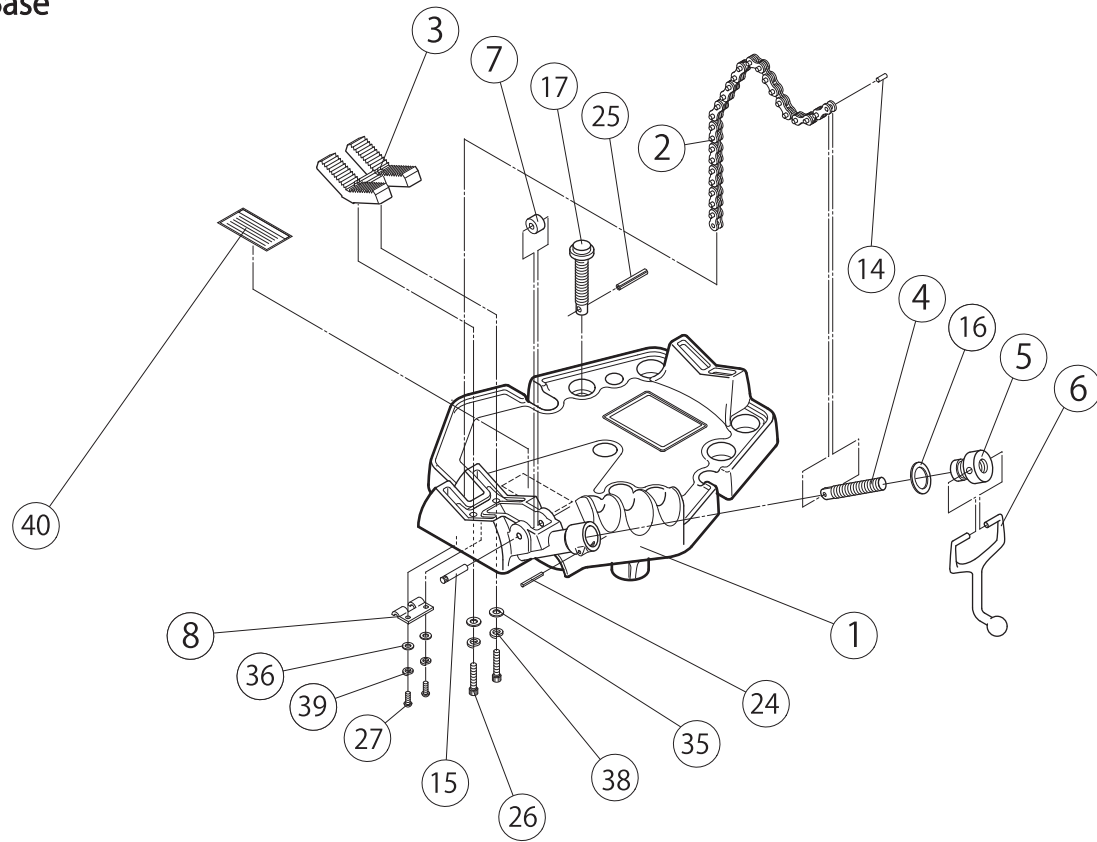


Fig. 3 Storing the stand

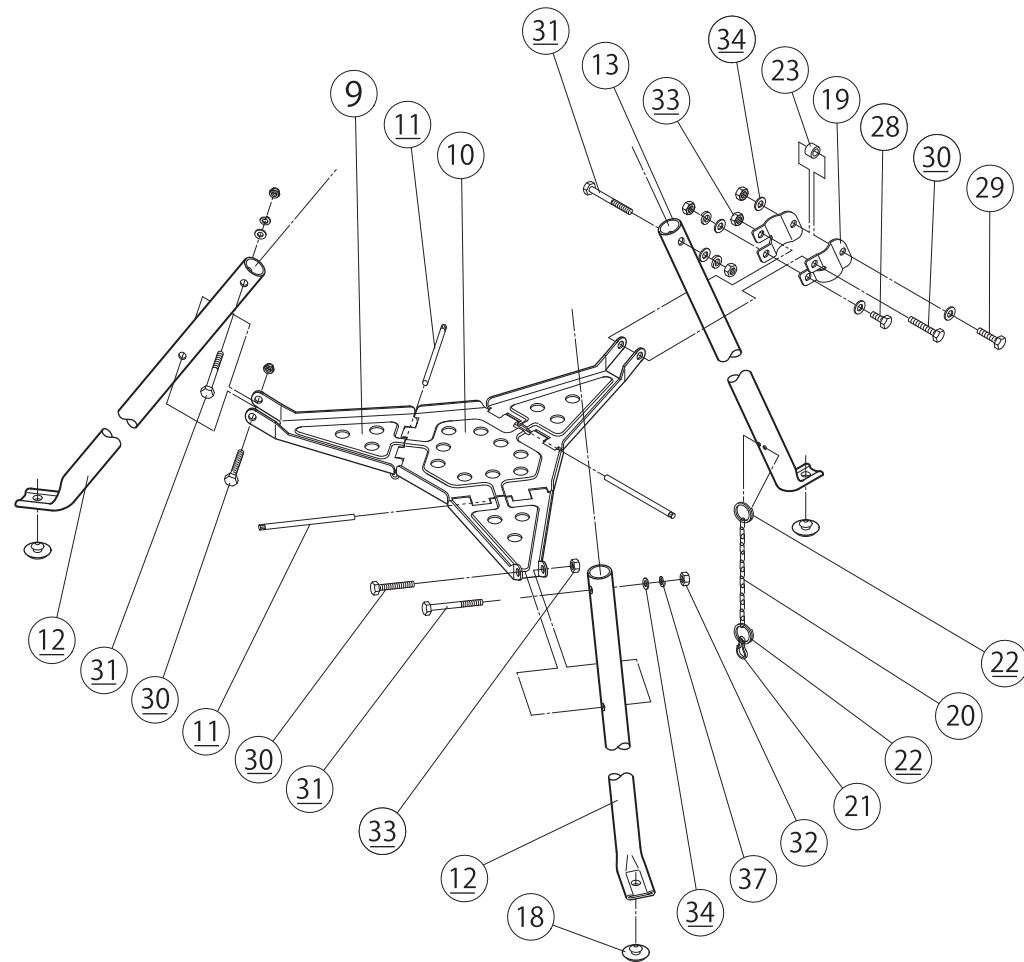
⚠ WARNING

- Be careful not to pinch your fingers when pushing down the tool tray as you set up. Also, keep your face away from the tray in case it suddenly jumps back.
- Be careful not to apply too much force when you put the stand away or the legs may suddenly close up and you could possibly injure yourself or hit yourself in the face.
- Do not use excessive force on the leg chain or else it could break. Walk evenly when carrying the stand.

1.Base



2.Legs



No.	Part No.	Part Name	Set	REX No.	Remarks (Old REX No.)
1	606737	Base	1	VT43	VS01(Old Red)/VS40(Gray)
2	606738	Chain	1	VT02	VS02
3	606739	Jaw	1	VT03	VS03
4	606740	Chain screw	1	VT04	VS04
5	606741	Swivel nut	1	VT05	VS05
6	606742	Handle	1	VT06	VS06
7	606743	Roller	1	VT07	VS07
8	606744	Wear plate	1	VT08	VS08
9	606745	Tool tray (A)	3	VT09	VS09
10	606746	Tool tray (S)	1	VT10	VS10
11	606747	Tray pin	3	VT11	VS11
12	606748	Leg (A)	2	VT12	VS12
13	606749	Leg (B)	1	VT13	VS13
14	606750	Chain pin	1	VT14	VS14
15	606763	Roller pin	1	VT15	VS15
16	606751	Friction ring	1	VT19	VS19
17	606752	Jack screw	1	VT25	VS25
18	606753	Grommet	3	VT27	VS27
19	606754	Tray support	1	VT28	VS28
20	606755	Leg chain	1	VT29	VS29
21	606756	Leg chain snap	1	VT30	VS30
22	606757	Leg chain ring	2	VT31	VS31
23	606764	Tray support collar	1	VT16	VS16
24	600847	Roll pin	(5×30)	WL56	WM530(WH#606758)
25	600925	Roll pin	(8×55)	WL89	WL890
26	606759	Socket head cap screw	(M8×40)	W085	W0850
27	603666	Socket button head cap screw	(M6×15)	WA27	W04F(Old Red)
28	600473	Hexagon head cap screw	(M10×20)	W100	W1000
29	600249	Hexagon head cap screw	(M10×30)	W101	W1010
30	606760	Hexagon head cap screw	(M10×50)	W105	W1050
31	606761	Hexagon head cap screw	(M10×80)	W108	W103(Old Red)
32	600148	Nut	(M10)	WC10	WC100
33	606762	Lock nut	(M10)	WE11	WE110
34	600147	Washer	(M10)	WI05	WI050
35	600245	Washer	(M8)	WI81	WI810
36	600211	Washer	(M6)	WI62	WI620
37	600182	Spring washer	(M10)	WG10	WG100
38	600130	Spring washer	(M8)	WG08	WG080
39	600132	Spring washer	(M6)	WG06	WG060
40	606766	Caution label		5Y58	9A62
41					
42					
43					
44					
45					
46					
47					
48					
49					
50					
51					
52					
53					
54					
55					
56					
57					
58					
59					
60					
61					
62					
63					
64					
65					