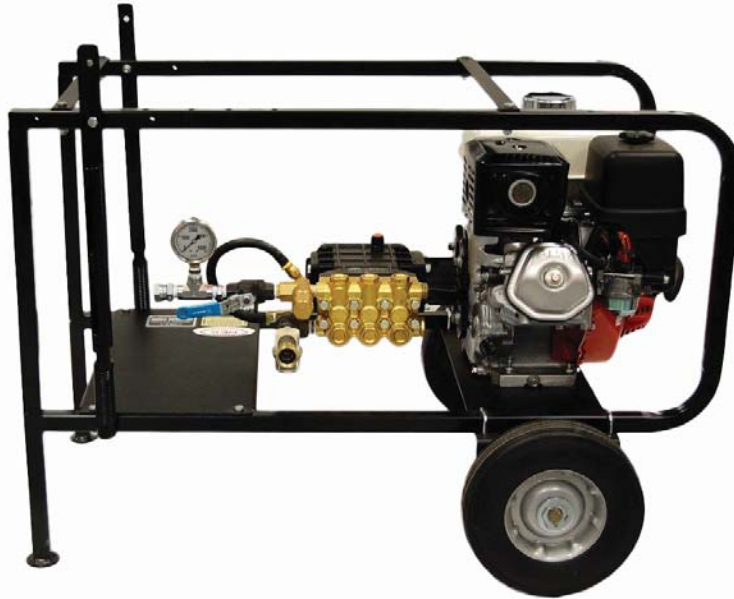




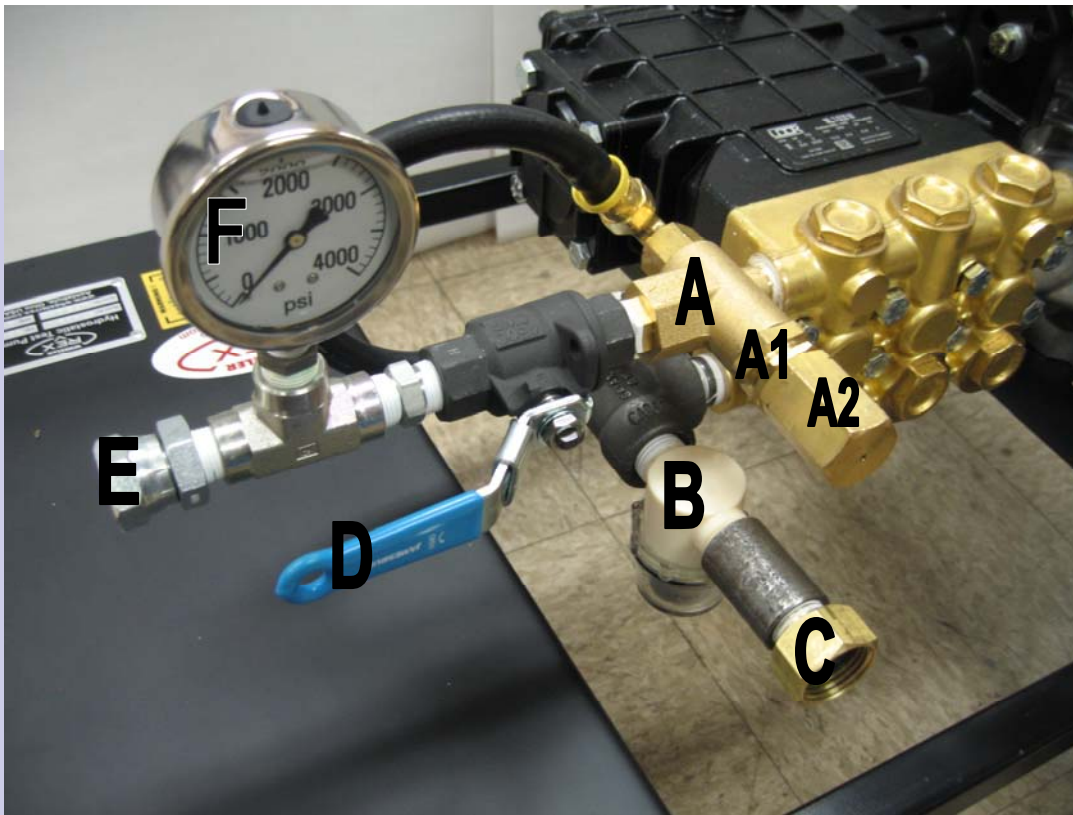
# 37308 / 373080

## Hydrostatic Test Pump



DIMENSIONS:	39"L x 28"W x 27"H
WEIGHT:	152lbs
PUMP:	Triplex Plunger: Positive Displacement Inlet and Outlet Ports: 1/2" inlet ; 3/8" NPT outlet Capacity: 3.5gpm Pressure: 150-3000psi Operating Speed: 3400rpm Operating Temp: 160 degree F max Lubrication: Continuous Oil Bath, 20oz Udor Lube Shaft Size: 1" diameter
ENGINE:	Honda 8hp gasoline engine
CONTROL:	Adjustable pressure relief valve
GAUGE:	Glycerin filled, 0 – 4000psi
DISCHARGE HOSE:	1/2" x 10' (3m) 3000psi working pressure
INLET HOSE:	3/4" x 10' (3m) with strainer

# Getting to Know Your Pump



- A. Relief Valve
- A1. Relief Valve Nut
- A2. Relief Valve Jam Nut
- B. Strainer Bowl
- C. Garden Hose Inlet
- D. Isolation Valve
- E. Output hose connection
- F. Gauge

Fig. 1



- A. Choke Lever
- B. Gas on/off lever

Fig. 2



A. Engine on/off switch

Fig. 3



A. Pull start handle

Fig. 4

# Operation of Test Pump

## Connecting your pump:

1. Connect suction hose or garden host to garden hose inlet ("C" Fig. 1). It may be necessary to loosen the clear bowl ("B" Fig. 1) on the strainer assembly to allow air to escape.
2. Connect high pressure hose to test vessel, then connect the hose to output hose connection ("E" Fig. 1).
3. Turn water supply on.
4. Open isolation valve ("D" Fig. 1).

## Operating your test pump:

1. Check engine gas and oil levels (See engine manual)
2. Set gas lever to "ON" position ("B" Fig. 2).
3. Set choke lever to "ON" position ("A" Fig. 2)
4. Set engine power switch to "ON" position ("A" Fig. 3).
5. Pressure relief valve is "pre-set" at 3,000psi
  - a. Loosen jam nut ("A2" Fig. 1) and turn pressure relief nut ("A" Fig. 1) counter clockwise to lower output pressure.
  - b. Be sure not to loosen too far. Nut will unscrew from relief valve completely as parts may be lost.
6. Pull start engine.

## Testing Procedure:

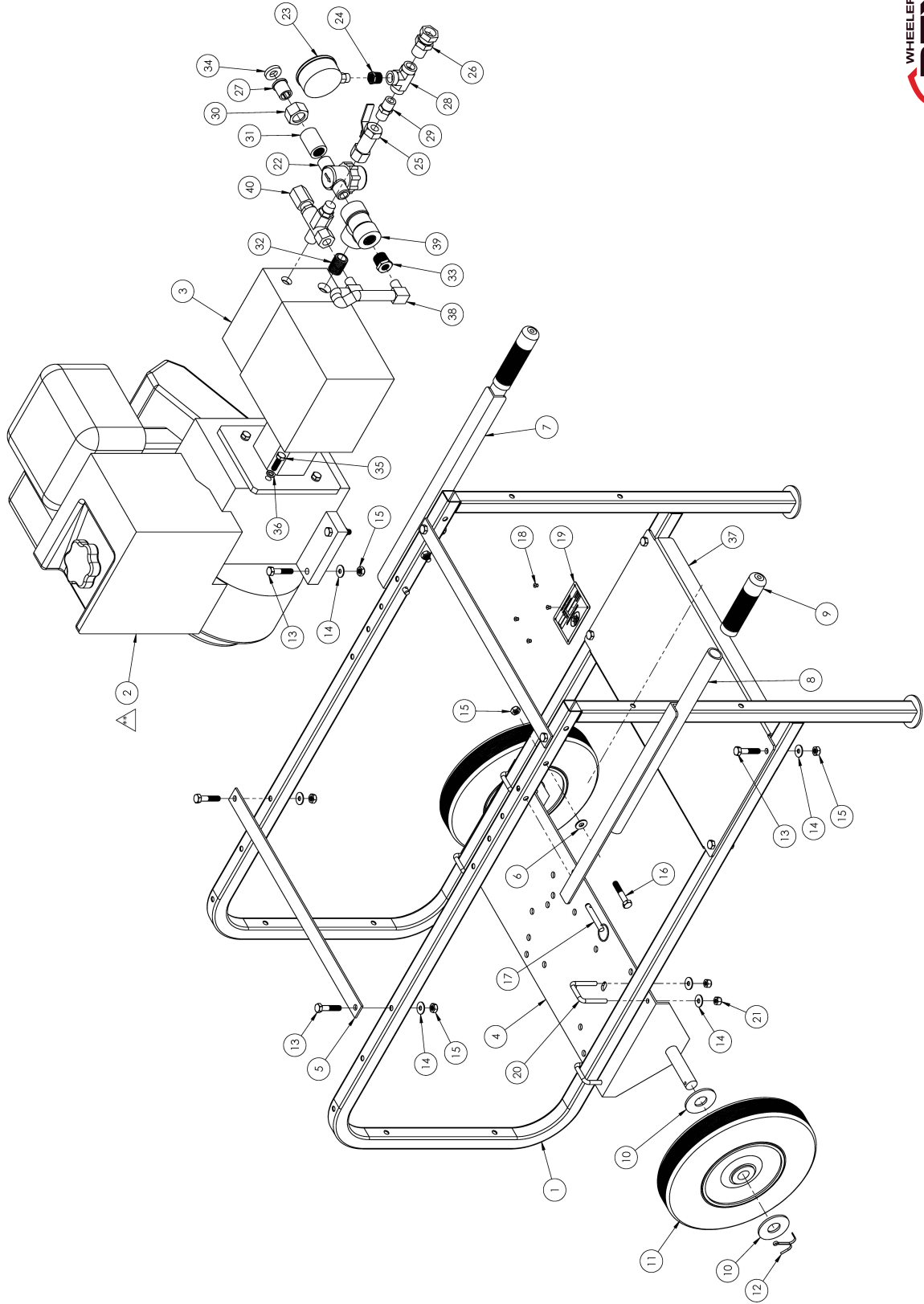
1. Slowly turn pressure relief nut ("A1" Fig. 1) clockwise to increase output pressure.
2. When output pressure is set, lock jam nut ("A2" Fig. 1) against pressure relief nut ("A1" Fig. 1).
  - a. Turn isolation valve ("D" Fig. 1) to the "OFF" position
3. Fig. 1 isolation valve ("D" Fig. 1) is shown in the "ON" position
4. Engine can now be turned off.
5. Watch gauge ("F" Fig. 1) for drop in pressure.



# Maintenance

- 50/50 antifreeze / water solution should be run through the pump after testing to avoid freezing parts. This also lubricates the pump and valves.
- Change pump oil at 3 months or 500 hours intervals using UDOR lube
- Refer to engine owners manual for engine maintenance.

△ USE PART NUMBER 276659 (HONDA ENGINE)  
FOR PUMP ASSEMBLY # 373080



Item	PN	Description	Qty
1	700387	CART SIDE	2
2	276662	8 HP HONDA ENGINE	1
3	277222	PUMP	1
4	700943	AXLE ASSEMBLY	1
5	700959	TOP SUPPORT	2
6	275685	5/16" FLAT WASHER	2
7	700858	RIGHT HANDLE ASSEMBLY	1
8	700859	LEFT HANDLE ASSEMBLY	1
9	154	GRIP	2
10	276129	3/4" WASHER	4
11	276441	THREADER CART WHEEL	2
12	276330	1/8 x 2 5/16 COTTER PIN	2
13	275638	5/16 x 1 1/2" HEX HEAD CAP SCREW	12
14	276540	1/4" FLAT WASHER	20
15	275857	5/16-18 HEX NYLON-INSERT LOCKNUTS	14
16	275639	5/16-18 x 1 3/4" HHCS	2
17	276752	COTTERLESS PIN w/ RING	2
18	275543	POP RIVET, STAR 4-2AAD	4
19	220874	NAME PLATE	1
20	700406	U BOLT	4
21	275426	1/4-20 ESNA STOP NUT	8
22	276420	STRAINER ASSEMBLY	1
23	276375	GAGE 4000 PSI	1
24	5613	3/8" to 1/4" HEX REDUCING BUSHING	1
25	276798	1/2" BALL VALVE	1
26	276345	3/8 NPT x 1/2 HOSE SWIVEL ADAPTER	1
27	275918	SWIVEL ADAPTER	1
28	276800	TEE	1
29	276801	3/8 HYDRAULIC NIPPLE	1
30	275925	SWIVEL NUT	1
31	275475	1/2" COUPLING	1
32	275669	1/2 x CLOSE PIPE NIPPLE	1
33	275670	1/2 x 1/4 FS SCRDR HX BUSH	1
34	275941	HOSE WASHER	1
35	277223	5/16-24 x 1" HHCS	4
36	275092	5/16 LOCK WASHER	4
37	700385	END PLATE	1
38	275915	BYPASS HOSE	1
39	275667	1/2" 2000LB FS SCRDR TEE	1
40	277224	RELIEF VALVE	1
41	277185	***WHEELER LABEL - NOT SHOWN***	1
42	277181	***WARNING LABEL - NOT SHOWN***	1
43	220577	***PRESSURE HOSE - NOT SHOWN***	1
44	34550	***SUCTION HOSE - NOT SHOWN***	1



## WHEELER-REX LIMITED LIFETIME WARRANTY

WHEELER-REX covers its products with a Limited Lifetime Warranty, with exception of pipe threading machines which have a Limited Three Year Warranty (including electric motors). Warranties from manufacturers of components used in our products may pre-empt the Wheeler-Rex warranty. Wheeler-Rex warranties against defects in material or workmanship. To take advantage of this warranty, the complete product must be delivered prepaid to Wheeler-Rex or any WHEELER-REX AUTHORIZED SERVICE CENTER. No tools are to be returned to the factory without receiving prior authorization. Obviously, failures due to misuse, abuse, or normal wear and tear are not covered by this warranty. **NO OTHER WARRANTY, WRITTEN, OR ORAL, APPLIES. THERE ARE NO WARRANTIES WHICH EXTEND BEYOND THE DESCRIPTION ON THE FACE HEREOF.** No employee, agent, dealer, or other person is authorized to give any warranty on behalf of Wheeler-Rex. Warranted products will be repaired or replaced at our option, at no charge and returned to you via prepaid transportation. Such replacement or repair is the exclusive remedy available from Wheeler-Rex. Wheeler-Rex is not liable for damage of any sort, including incidental and consequential damages. Some U.S.A. states do not allow the exclusion or limitation of incidental or consequential damages, so the above limitation or exclusion may not apply. This warranty gives you specific legal rights, and you may also have other rights which vary from state to state.

Form # 1031

## WARNING

### GENERAL TOOL OPERATION WARNINGS

#### FOR ALL TOOLS-

1. **Keep Guards in Place** and in working order.
2. **Remove Adjusting Keys and Wrenches** from tool before turning it on.
3. **Keep Work Area Clean.** Cluttered areas and benches invite accidents.
4. **Avoid Dangerous Environment.** Don't use power tools in damp or wet locations. Keep work area well lit. Don't expose power tools to rain.
5. **If you must use an electric tool** in a damp or wet location; make sure it is plugged into a circuit which is protected by a ground fault interrupt.
6. **Keep Children Away. ALL VISITORS SHOULD BE KEPT A SAFE DISTANCE FROM WORK AREA.**
7. **Store Idle Tools** in dry, high, or locked-up place out of reach of children.
8. **Don't Force Tool.** It will do a better and safer job at the rate for which it is designed.
9. **Use Right Tool.** Don't force a small tool or attachment to do the job of a heavy-duty tool.
10. **Wear Proper Apparel.** No loose clothing or jewelry to get caught in moving parts. Rubber gloves and footwear are recommended when working outdoors.
11. **Use Safety Glasses.**
12. **Don't Abuse Cord.** Never carry tool by cord or yank it to disconnect from receptacle. Keep cord from heat, oil, and sharp edges.
13. **Secure Work.** Use clamps or vise to hold work when practical. It's safer than using your hand and it frees both hands to operate tool.
14. **Don't Overreach.** Keep proper footing and balance at all times.
15. **Maintain Tools Properly.** Keep tools sharp and clean for best and safest performance. Follow instructions for lubricating and changing accessories. Equipment operators must have proper maintenance & instruction sheets. Be sure the tool operator reads and understands this information. If you don't have current maintenance and instruction sheets, contact the factory & we will supply them at no charge.
16. **Disconnect Tools** when not in use; before servicing; when changing accessories such as dies, cutters, etc.
17. **Avoid Accidental Starting.** Don't carry plugged-in tool with finger on switch. Be sure switch is off when plugging in.
18. **Outdoor Use Extension Cords.** When tool is used outdoors, use only extension cords suitable for use outdoors and so marked.
19. **Wear Ear Protection** if exposed to long periods of very noisy shop operations.
20. **Do not operate** tools while under the influence of alcohol, drugs or medication.



**WARNING** This product can expose you to chemicals lead and lead compounds, which are known to the State of California to cause cancer and birth defects or other reproductive harm. For more information go to [www.P65Warnings.ca.gov](http://www.P65Warnings.ca.gov).



Wheeler-Rex • Ashtabula, Ohio  
Tel: 800-321-7950 or 440-992-2925 • Fax: 440-992-2925  
[wheeler@wheelerrex.com](mailto:wheeler@wheelerrex.com) • [www.wheelerrex.com](http://www.wheelerrex.com)