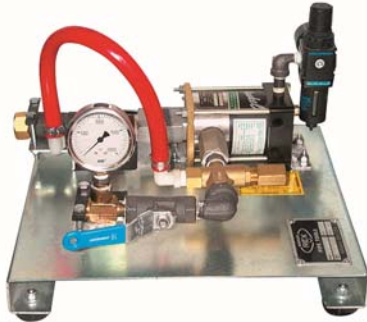


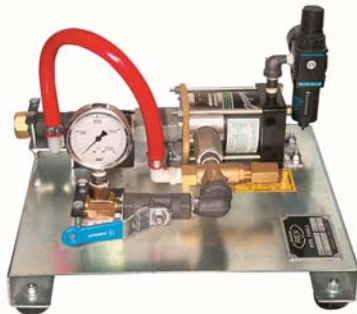


# Operating Instructions Models 32150 and 32300 Hydrostatic Test Pumps

## Specifications



DIMENSIONS:	14" L x 19" W x 9"H
WEIGHT:	34 lbs., 11 kg
PUMP:	Reciprocating Plunger Inlet: 3/4" Hose, Garden Outlet: 1/4" NPT Male Capacity: 1gpm at free flow Pressure: 100 - 1500psi; 1gpm; 100psi @75cfm
CONTROL:	Adjustable pressure relief valve
GAUGE:	Glycerin filled, 0-2000psi
DISCHARGE HOSE:	1/4" x 10' (3m), 5500psi working pressure



DIMENSIONS:	14" L x 19" W x 9"H
WEIGHT:	34 lbs., 11 kg
PUMP:	Reciprocating Plunger Inlet: 3/4" Hose, Garden Outlet: 1/4" NPT Male Capacity: 1gpm at free flow Pressure: 100 - 3000psi; .5gpm; 100psi @75cfm
CONTROL:	Adjustable pressure relief valve
GAUGE:	Glycerin filled, 0-4000psi
DISCHARGE HOSE:	1/4" x 10' (3m), 5500psi working pressure



## WHEELER-REX LIMITED LIFETIME WARRANTY

WHEELER-REX covers its products with a Limited Lifetime Warranty, with exception of pipe threading machines which have a Limited Three Year Warranty (including electric motors). Warranties from manufacturers of components used in our products may pre-empt the Wheeler-Rex warranty. Wheeler-Rex warranties against defects in material or workmanship. To take advantage of this warranty, the complete product must be delivered prepaid to Wheeler-Rex or any WHEELER-REX AUTHORIZED SERVICE CENTER. No tools are to be returned to the factory without receiving prior authorization. Obviously, failures due to misuse, abuse, or normal wear and tear are not covered by this warranty. NO OTHER WARRANTY, WRITTEN, OR ORAL, APPLIES. THERE ARE NO WARRANTIES WHICH EXTEND BEYOND THE DESCRIPTION ON THE FACE HEREOF. No employee, agent, dealer, or other person is authorized to give any warranty on behalf of Wheeler-Rex. Warranted products will be repaired or replaced at our option, at no charge and returned to you via prepaid transportation. Such replacement or repair is the exclusive remedy available from Wheeler-Rex. Wheeler-Rex is not liable for damage of any sort, including incidental and consequential damages. Some U.S.A. states do not allow the exclusion or limitation of incidental or consequential damages, so the above limitation or exclusion may not apply. This warranty gives you specific legal rights, and you may also have other rights which vary from state to state.

Form # 1031

## WARNING

### GENERAL TOOL OPERATION WARNINGS

#### FOR ALL TOOLS-

1. **Keep Guards in Place** and in working order.
2. **Remove Adjusting Keys and Wrenches** from tool before turning it on.
3. **Keep Work Area Clean.** Cluttered areas and benches invite accidents.
4. **Avoid Dangerous Environment.** Don't use power tools in damp or wet locations. Keep work area well lit. Don't expose power tools to rain.
5. **If you must use an electric tool** in a damp or wet location; make sure it is plugged into a circuit which is protected by a ground fault interrupt.
6. **Keep Children Away. ALL VISITORS SHOULD BE KEPT A SAFE DISTANCE FROM WORK AREA.**
7. **Store Idle Tools** in dry, high, or locked-up place out of reach of children.
8. **Don't Force Tool.** It will do a better and safer job at the rate for which it is designed.
9. **Use Right Tool.** Don't force a small tool or attachment to do the job of a heavy-duty tool.
10. **Wear Proper Apparel.** No loose clothing or jewelry to get caught in moving parts. Rubber gloves and footwear are recommended when working outdoors.
11. **Use Safety Glasses.**
12. **Don't Abuse Cord.** Never carry tool by cord or yank it to disconnect from receptacle. Keep cord from heat, oil, and sharp edges.
13. **Secure Work.** Use clamps or vise to hold work when practical. It's safer than using your hand and it frees both hands to operate tool.
14. **Don't Overreach.** Keep proper footing and balance at all times.
15. **Maintain Tools Properly.** Keep tools sharp and clean for best and safest performance. Follow instructions for lubricating and changing accessories. Equipment operators must have proper maintenance & instruction sheets. Be sure the tool operator reads and understands this information. If you don't have current maintenance and instruction sheets, contact the factory & we will supply them at no charge.
16. **Disconnect Tools** when not in use; before servicing; when changing accessories such as dies, cutters, etc.
17. **Avoid Accidental Starting.** Don't carry plugged-in tool with finger on switch. Be sure switch is off when plugging in.
18. **Outdoor Use Extension Cords.** When tool is used outdoors, use only extension cords suitable for use outdoors and so marked.
19. **Wear Ear Protection** if exposed to long periods of very noisy shop operations.
20. **Do not operate tools** while under the influence of alcohol, drugs or medication.



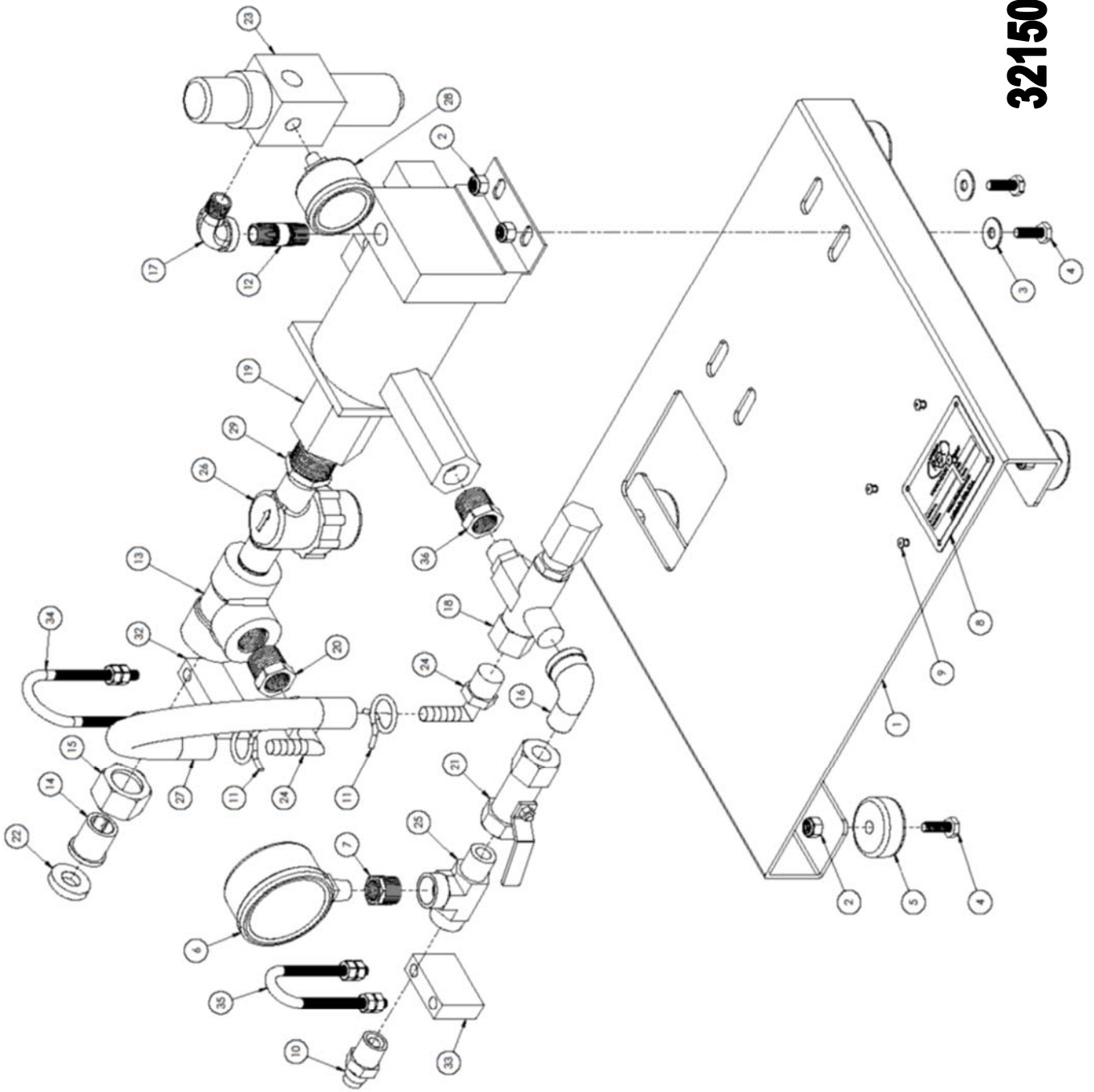
# Operating Instructions Models 32150 and 32300 Hydrostatic Test Pumps

1. Attach garden hose to garden hose inlet.
2. Turn water on.
  - a. Make sure water fills up the clear strainer bowl.
    - i. It may be necessary to purge the air out by unscrewing the clear strainer bowl. Make sure to retighten strainer bowl after purging out the air.
3. Attach the high pressure output hose to the test vessel and to the test pump outlet.
4. Open ball valve near the pressure gauge.
5. Unscrew the air regulator valve
  - a. This will allow you to adjust the air pressure as required.
6. Connect airline to air regulator input. Pump will now operate.
7. Slowly increase air pressure by turning air regulator cap in the clockwise direction (tighten cap)
  - a. As air pressure is increased output pressure will increase.
8. Relief valves are preset to 1500 PSI or 3000 PSI depending upon pump model (1500 PSI for 32150 or 3000 PSI for 32300).
  - a. Relief valves can be 'set' at lower pressures by 'unscrewing' the relief valve nut.
  - b. Very low pressures ( example 0-500 PSI) may not be available thru the relief valve. Therefore by using less input air pressure you can control the output pressure of the pump.
9. Once the output pressure has been met close the 'isolation' valve. (Valve next to the pressure gauge.) At this point the (input) air supply can be shutoff.





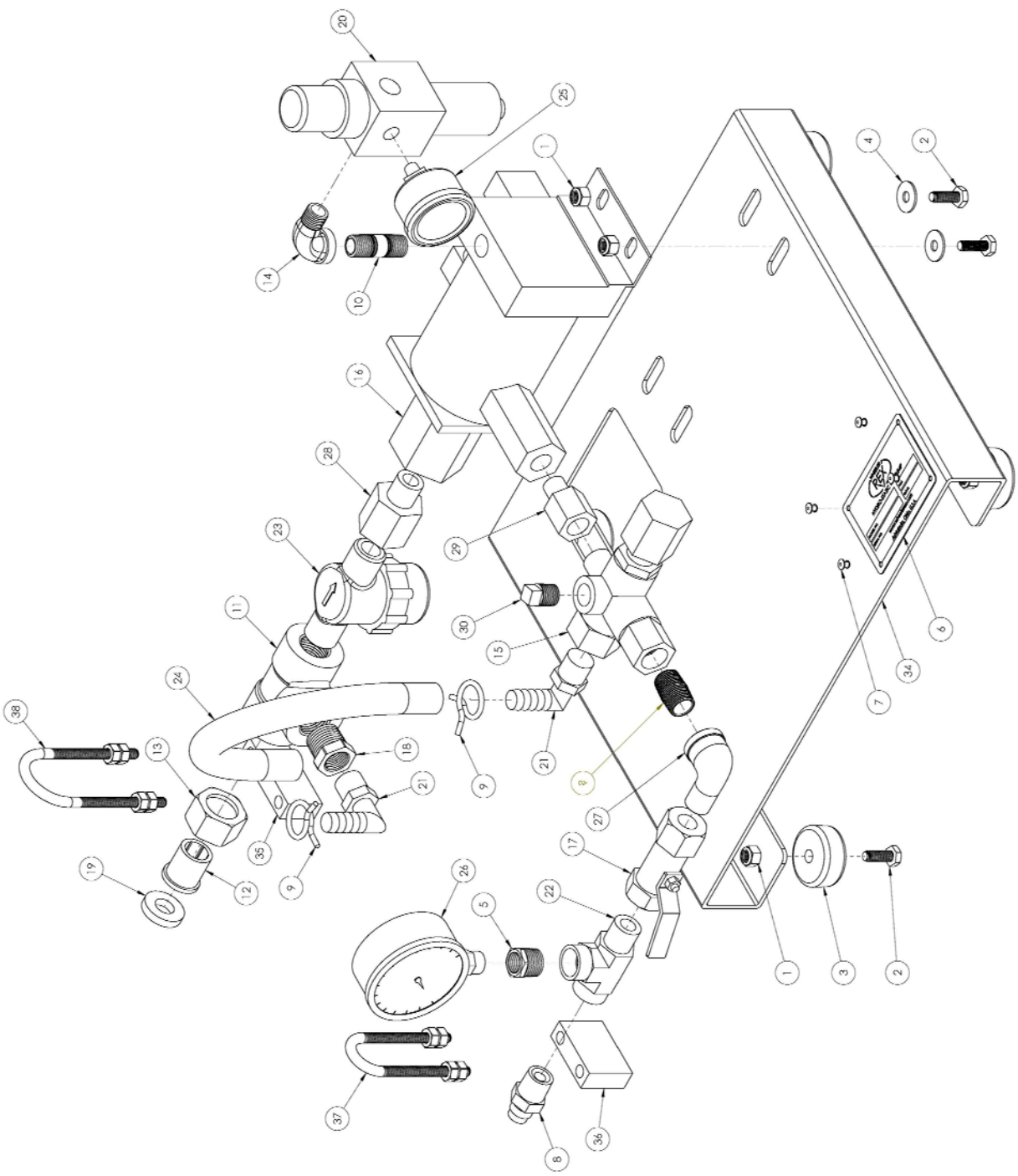
# 32150 Test Pump



Item	Part No	Description	32150	Qty
1	700372	BASE PLATE		1
2	275426	1/4-20 ESNA STOP NUT		8
3	276540	1/4" FLAT WASHER		4
4	560081	1/4-20 x 3/4" HHCS		8
5	276443	RUBBER FOOT		4
6	275676	GAUGE-2000 PSI		1
7	5613	3/8" to 1/4" HEX REDUCING BUSHING		1
8	220874	NAME PLATE		1
9	275543	POP RIVET, STAR 4-2AAD		4
10	5614	HOSE ADAPTER		1
11	276185	HOSE CLAMP		2
12	276465	1/4" x 1 1/2" PIPE NIPPLE		1
13	275667	1/2" 2000LB FS SCR D TEE		1
14	275918	SWIVEL ADAPTER		1
15	275925	SWIVEL NUT		1
16	275865	3/8" x 90 DEG STREET ELBOW		1
17	275664	1/4" X 90 DEG. STREET ELL		1
18	7500	RELIEF VALVE		1
19	276437	PNEUMATIC PUMP		1
20	276722	1/2 X 3/8 BUSHING		1
21	276700	1/2" VALVE		1
22	275941	HOSE WASHER		1
23	276435	PRESSURE REGULATOR		1
24	276186	3/8 NPTx 1/2 90 deg. HOSE BARB		2
25	276445	3/8" x M x F x F HYDRAULIC TEE		1
26	276420	STRAINER ASSEMBLY		1
27	700402	1/2" ID x 10" LONG HOSE		1
28	276444	GAUGE		1
29	275647	3/4" NPT x 1/2" NPT BUSHING		1
30	222000	WARNING TAG ***NOT SHOWN***		1
31	3917	HIGH PRESSURE HOSE ***NOT SHOWN***		1
32	701399	LARGE U-BOLT SPACER		1
33	701398	SMALL U-BOLT SPACER		1
34	277201	LARGE U-BOLT		1
35	277200	SMALL U-BOLT		1
36	276795	1/2 X 3/8 BUSHING		1



# 32300 Test Pump



Item	Part No	Description	32300	Qty
1	275426	1/4-20 ESNA STOP NUT		8
2	560081	1/4-20 x 3/4" HHCS		8
3	276443	RUBBER FOOT		4
4	276540	1/4" FLAT WASHER		4
5	5613	3/8" to 1/4" HEX REDUCING BUSHING		1
6	220874	NAME PLATE		1
7	275543	POP RIVET, STAR 4-2AAD		4
8	5614	HOSE ADAPTER		1
9	276185	HOSE CLAMP		2
10	276465	1/4" x 1 1/2" PIPE NIPPLE		1
11	275667	1/2" 2000LB FS SCR D TEE		1
12	275918	SWIVEL ADAPTER		1
13	275925	SWIVEL NUT		1
14	275664	1/4" X 90 DEG. STREET ELL		1
15	276357	RELIEF VALVE		1
16	276464	PNEUMATIC PUMP		1
17	276798	1/2" BALL VALVE		1
18	276795	1/2 X 3/8 BUSHING		1
19	275941	HOSE WASHER		1
20	276435	PRESSURE REGULATOR		1
21	276186	3/8 NPTx 1/2 90 deg. HOSE BARB		2
22	276445	3/8" x M x F x F HYDRAULIC TEE		1
23	276420	STRAINER ASSEMBLY		1
24	700402	1/2" ID x 10" LONG HOSE		1
25	276444	GAUGE		1
26	276375	GAGE 4000 PSI		1
27	275865	3/8" x 90 DEG STREET ELBOW		1
28	277115	3/8" NPTM X 1/2" NPTF ADAPTER		1
29	277114	1/4" NPTM x 3/8" NPTF ADAPTER		1
30	276468	1/4" SQ HD PIPE PLUG		1
31	276797	3/8 XH CLOSE NIPPLE		1
32	222000	WARNING TAG ***NOT SHOWN***		1
33	3917	10' HIGH PRESSURE HOSE ***NOT SHOWN***		1
34	700372	BASE PLATE		1
35	701399	LARGE U-BOLT SPACER		1
36	701398	SMALL U-BOLT SPACER		1
37	277200	SMALL U-BOLT		1
38	277201	LARGE U-BOLT		1



Wheeler Rex ▪ 3744 Jefferson Road ▪ Ashtabula, Ohio 44005  
Tel: 800-321-7950 or 440-998-2788 ▪ Fax: 440-992-2925  
wheeler@wheelerrex.com ▪ www.wheelerrex.com