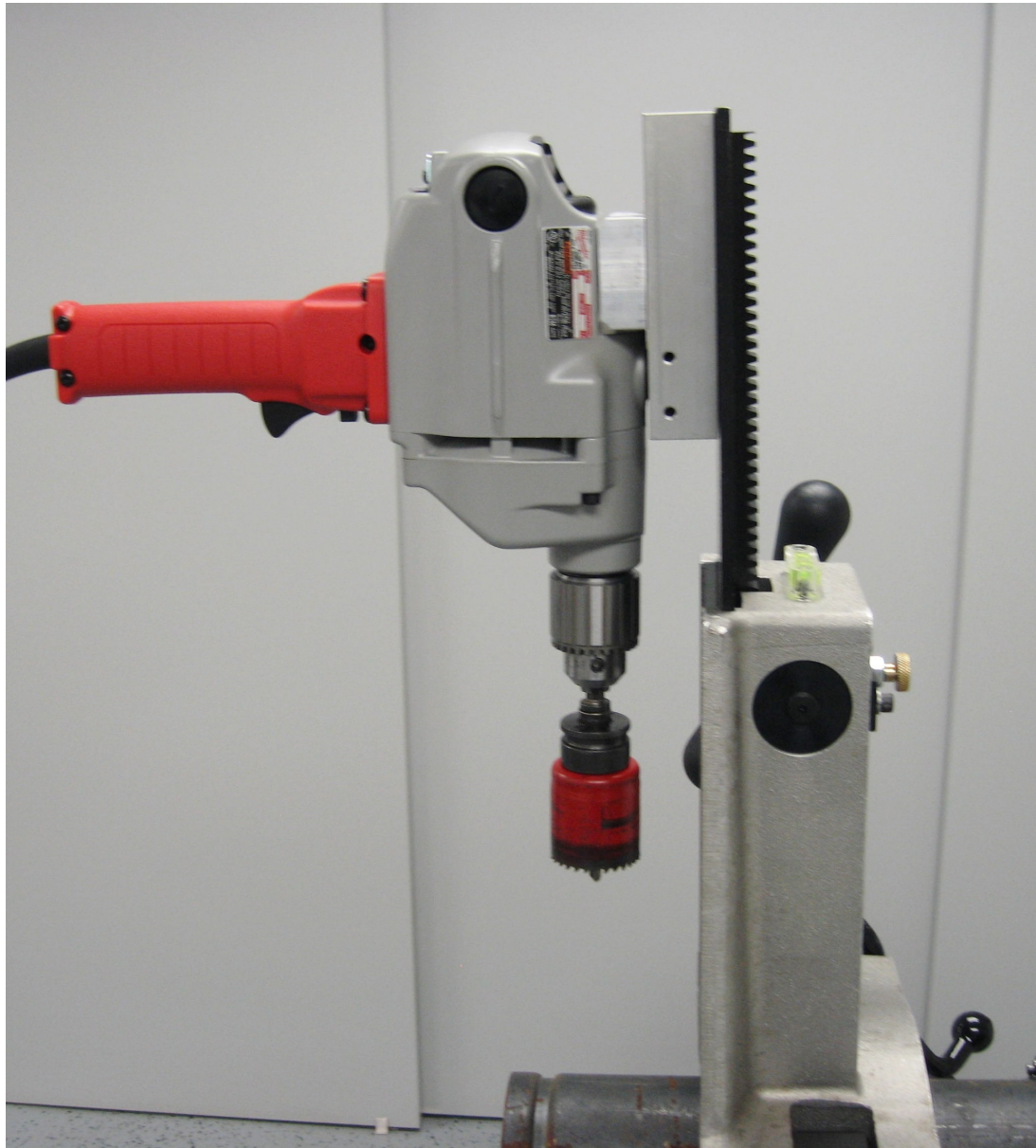


3090/ 3092 PORTABLE HOLE CUTTER SYSTEM



Wheeler Rex ■ Ashtabula, Ohio USA

www.wheelerrex.com ■ wheeler@wheelerrex.com

ATTACHING THE DRILL

The 3090 Portable Hole Cutter Assembly does not come with a drill. The following instructions show how to attach the drill to the gear rack assembly. This assembly is designed to be used with a Milwaukee Model # 1660-6 drill.



Screws (2)

Handle (1)

Remove (2) screws and plastic handle from drill body



Thread #275118 Socket Head Cap Screw into #701015 Plug.

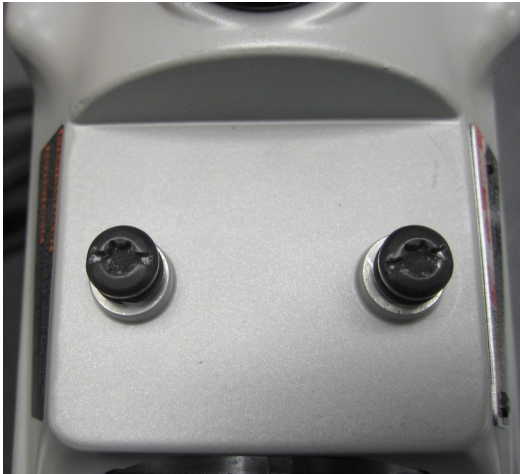


Using an Allen Key, tighten the Plug into drill body.

ATTACHING THE DRILL CONTINUED



Remove #275118 Socket Head Cap Screw from #701015 Plug.

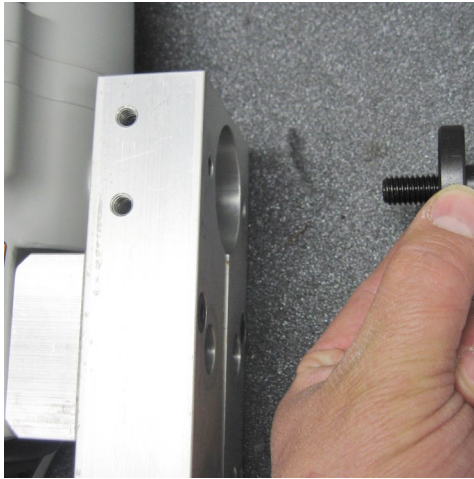


Replace handle screws back into threaded holes

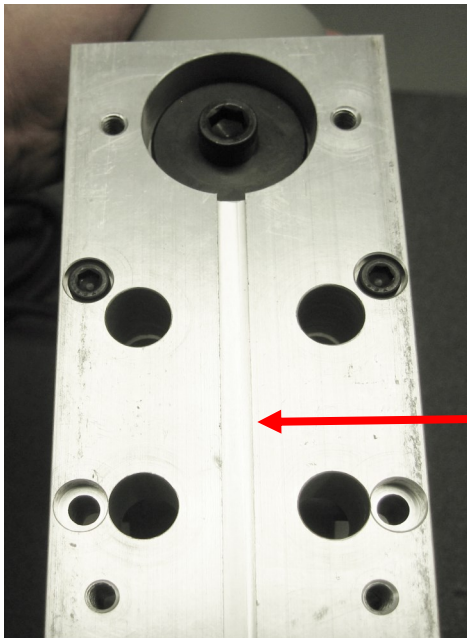


Install the following parts (#700996 Lower block, #701190 Key, #701111 Adapter Block-Milwaukee, (2) #275016 Socket Head Cap Screws) over #701015 Plug as shown.

ATTACHING THE DRILL CONTINUED

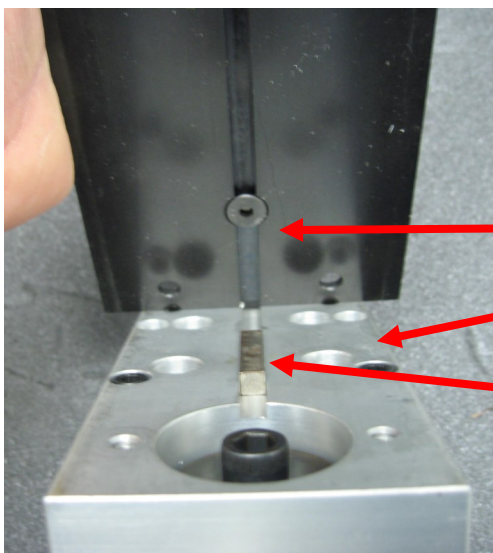


Install #275118 SHCS and #701014 Washer into the counter bored hole of #700996 Lower block. This will secure the block to the drill body



Key Slot

Install #701190 Key in to the key slot of part #700996 Lower Block.



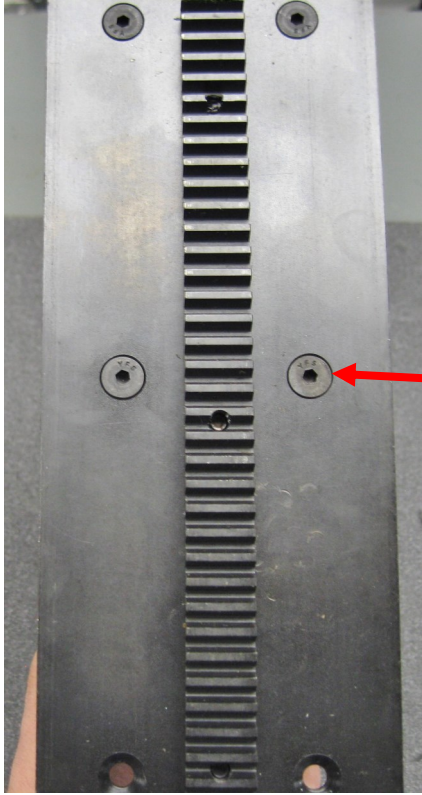
Key Slot

Lower Block

Key 701190

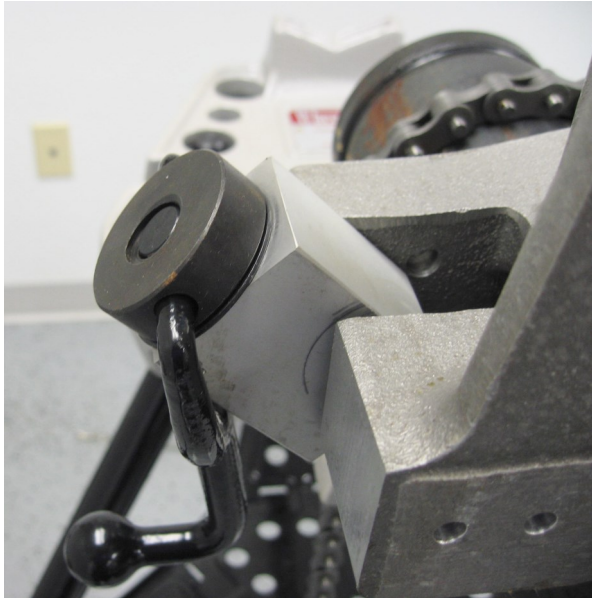
Align key installed on #700966 Lower Block to key slot on #701063 Plate block.

ATTACHING THE DRILL CONTINUED



Install (4) #276888 ¼-20 Flat Head Cap Screws into Plate. Tighten all (4) screws using an allen key.

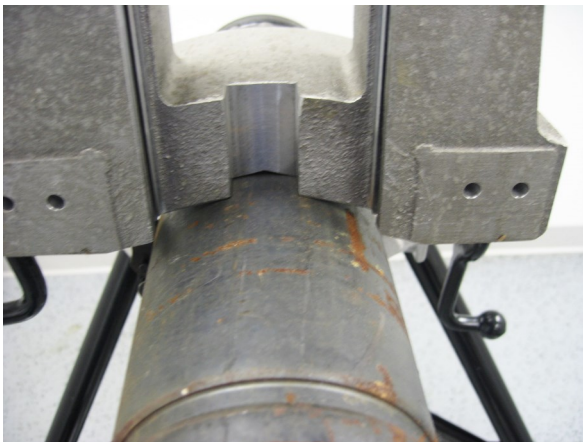
MOUNTING THE CUTTER FRAME TO THE PIPE



Turn Handle counter clockwise to lower Chain Screw threads.

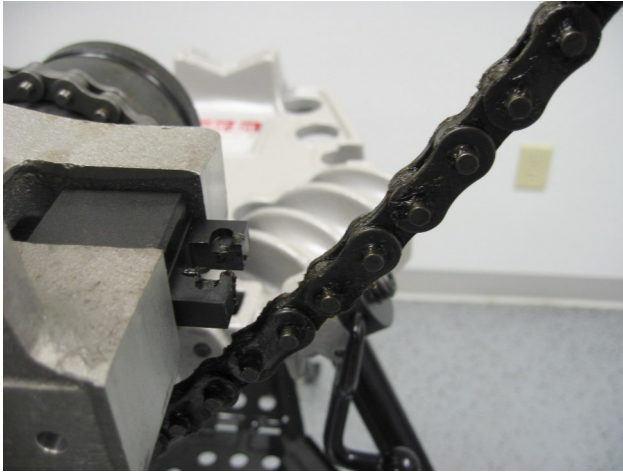


Place frame on pipe.

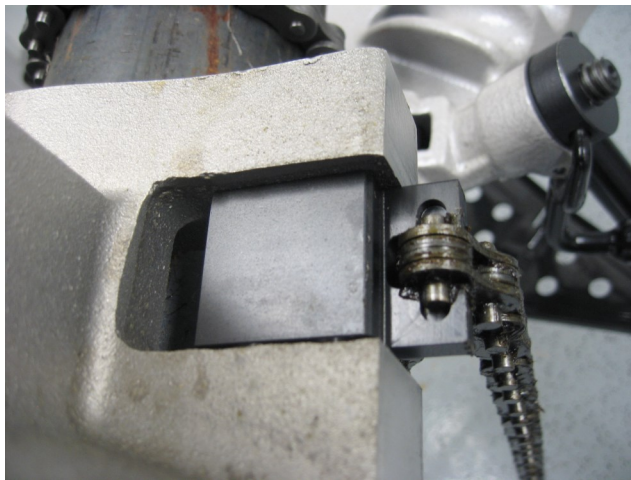


Make sure the machined "V" in the bottom of the frame is centered on the pipe.

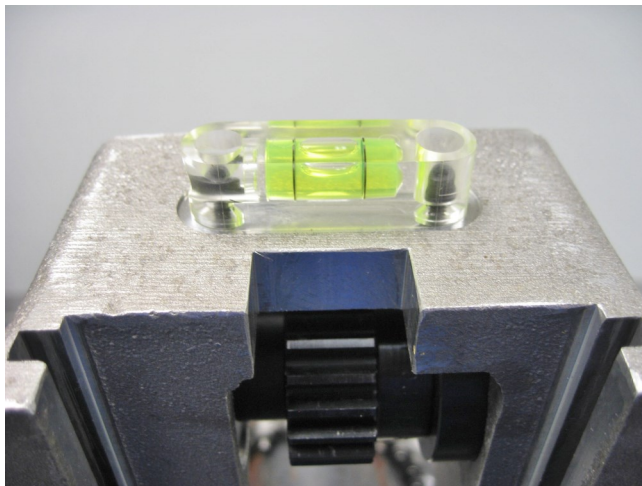
USING THE 3091 / 3093 PORTABLE HOLE CUTTER



Pull the chain upward and place into the Chain Hook Block #700993. (see below)

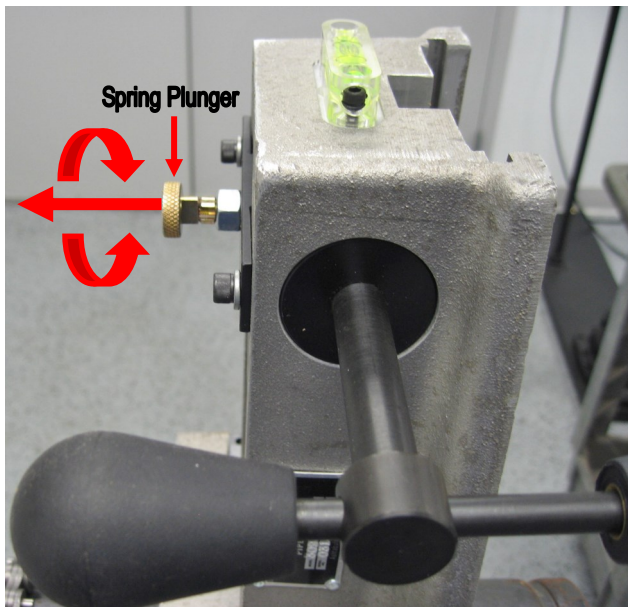


Once chain is hooked into the block, turn Handle #606742 in the clockwise direction to tighten frame to pipe.

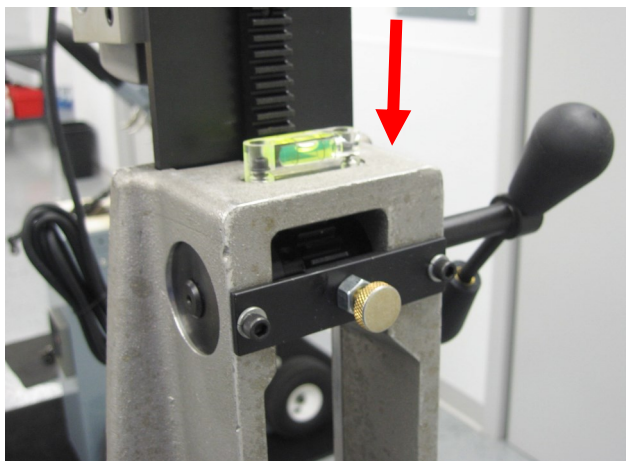


A bubble level is mounted on top of the frame for your convenience.

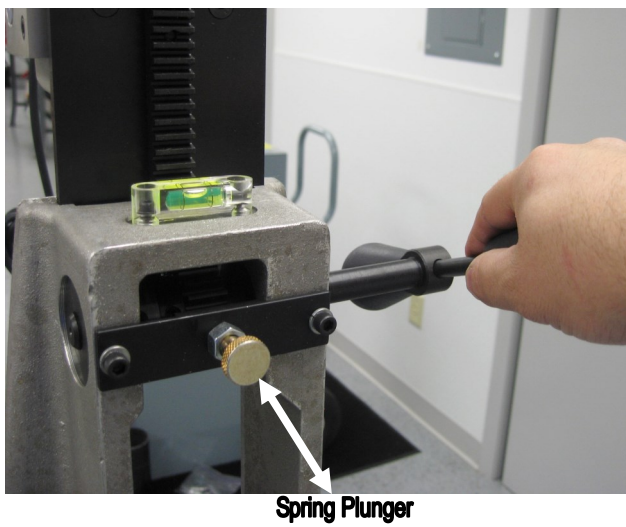
ASSEMBLING THE DRILL TO THE FRAME



Pull Retractable Spring Plunger #276899 out and turn 90 degrees. This allows the feed handle to turn freely.

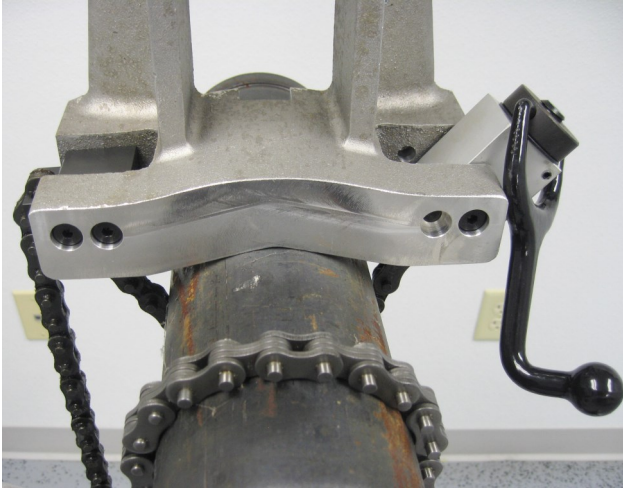


Place Plate #701063 (with drill attached) into the slot of frame. Turn Retractable Spring Plunger Knob #276899 90 degrees to lock feed handle.

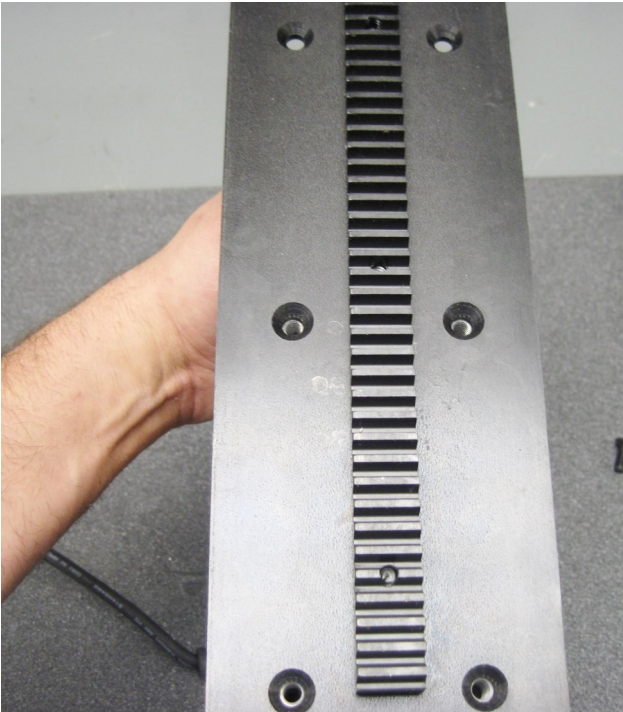


Once the drill has been placed into the frame, hold the feed handle and pull the retractable spring plunger knob 90 degrees to unlock feed handle before and after drilling.

OTHER NOTES



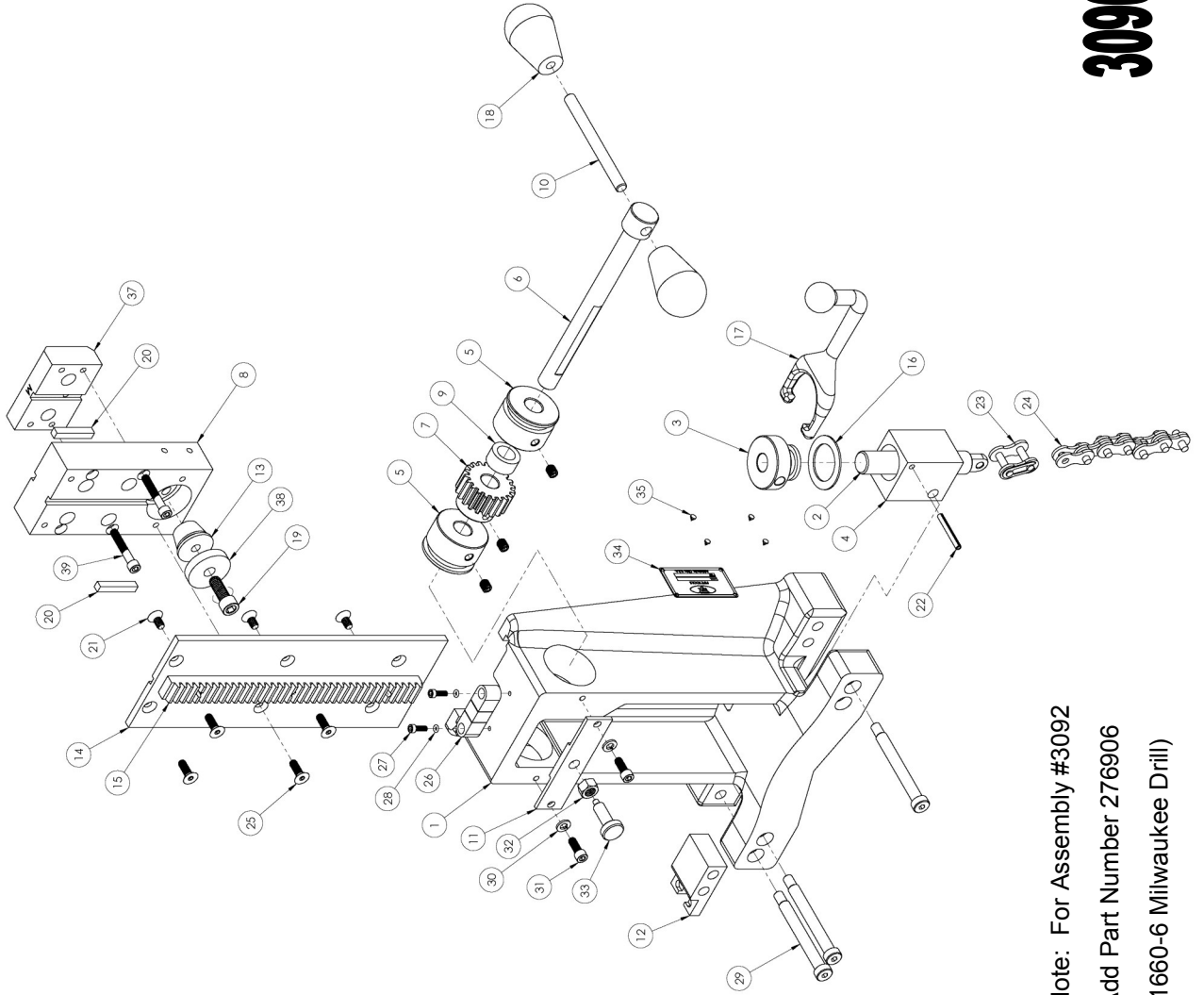
Both the #700993 Chain Hook, and the #700985 Chain Tension Block can be relocated to the opposite sides of the #700975 Frame if needed to fit in tight quarters.



There are (6) holes located on the #701063 Plate. These holes are equally spaced to mount in a few different configurations to the #700996 Lower Block. This allows the operator to change for drill stroke requirements or overall space requirements.



3090 / 3092 Hole Cutter



Note: For Assembly #3092
Add Part Number 276906
(1660-6 Milwaukee Drill)



Item	Part No	Description	Qty
1	700975	FRAME (MACHINED)	1
2	700710	CHAIN SCREW	1
3	700708	CRANK NUT	1
4	700985	CHAIN TENSION BLOCK	1
5	700986	SPACER (FOR 3090)	2
6	701010	SHAFT	1
7	701012	SPUR GEAR	1
8	700996	LOWER BLOCK	1
9	701013	SPACER	1
10	701016	CROSS BAR	1
11	701098	FRONT GUARD	1
12	700993	CHAIN HOOK	1
13	701015	PLUG	1
14	701063	PLATE	1
15	701113	RACK, MACHINED	1
16	606751	BEARING	1
17	606742	HANDLE	1
18	276834	HANDLE END	2
19	275118	3/8-16 x 1" SOCKET HEAD CAP SCREW	1
20	275648	KEYWAY	2
21	276888	1/4-20 x 1/2" FLAT HEAD CAP SCREW	3
22	275862	3/16" DIA x 1 1/2" ROLL PIN	1
23	2065	CHAIN CONNECTING LINK	1
24	276900	CHAIN	1
25	275040	1/4-20 x 3/4" FLAT HEAD CAP SCREW	4
26	277063	BUBBLE LEVEL	1
27	275402	#8-32 x 1/2" SHCS	2
28	277064	O-RING	2
29	276833	5/16-18 x 3/8" DIA. x 3" SHOULDER SCREW	3
30	275105	1/4" SPLIT LOCK WASHER	2
31	275021	1/4-20 x 5/8" SOCKET HEAD CAP SCREW	2
32	2024	3/8-16 HEX NUT	1
33	276899	RETRACTABLE SPRING PLUNGER	1
34	700595	NAME PLATE	1
35	276203	METAL TAK	4
36	275649	5/16-18 x 3/8" CUP POINT SET SCREW	3
37	701111	ADAPTER BLOCK-MILWAUKEE	1
38	701014	WASHER	1
39	275016	1/4-20 x 1 1/2" SOCKET HEAD CAP SCREW	2
40	701114	CARRYING CASE ***NOT SHOWN***	1



WHEELER-REX LIMITED LIFETIME WARRANTY

WHEELER-REX covers its products with a Limited Lifetime Warranty, with exception of pipe threading machines which have a Limited Three Year Warranty (including electric motors). Warranties from manufacturers of components used in our products may pre-empt the Wheeler-Rex warranty. Wheeler-Rex warrants against defects in material or workmanship. To take advantage of this warranty, the complete product must be delivered prepaid to Wheeler-Rex or any WHEELER-REX AUTHORIZED SERVICE CENTER. No tools are to be returned to the factory without receiving prior authorization. Obviously, failures due to misuse, abuse, or normal wear and tear are not covered by this warranty. **NO OTHER WARRANTY, WRITTEN, OR ORAL, APPLIES. THERE ARE NO WARRANTIES WHICH EXTEND BEYOND THE DESCRIPTION ON THE FACE HEREOF.** No employee, agent, dealer, or other person is authorized to give any warranty on behalf of Wheeler-Rex. Warranted products will be repaired or replaced at our option, at no charge and returned to you via prepaid transportation. Such replacement or repair is the exclusive remedy available from Wheeler-Rex. Wheeler-Rex is not liable for damage of any sort, including incidental and consequential damages. Some U.S.A. states do not allow the exclusion or limitation of incidental or consequential damages, so the above limitation or exclusion may not apply. This warranty gives you specific legal rights, and you may also have other rights which vary from state to state.

Form # 1031

WARNING

GENERAL TOOL OPERATION WARNINGS

FOR ALL TOOLS-

1. **Keep Guards in Place** and in working order.
2. **Remove Adjusting Keys and Wrenches** from tool before turning it on.
3. **Keep Work Area Clean.** Cluttered areas and benches invite accidents.
4. **Avoid Dangerous Environment.** Don't use power tools in damp or wet locations. Keep work area well lit. Don't expose power tools to rain.
5. **If you must use an electric tool** in a damp or wet location; make sure it is plugged into a circuit which is protected by a ground fault interrupt.
6. **Keep Children Away. ALL VISITORS SHOULD BE KEPT A SAFE DISTANCE FROM WORK AREA.**
7. **Store Idle Tools** in dry, high, or locked-up place out of reach of children.
8. **Don't Force Tool.** It will do a better and safer job at the rate for which it is designed.
9. **Use Right Tool.** Don't force a small tool or attachment to do the job of a heavy-duty tool.
10. **Wear Proper Apparel.** No loose clothing or jewelry to get caught in moving parts. Rubber gloves and footwear are recommended when working outdoors.
11. **Use Safety Glasses.**
12. **Don't Abuse Cord.** Never carry tool by cord or yank it to disconnect from receptacle. Keep cord from heat, oil, and sharp edges.
13. **Secure Work.** Use clamps or vise to hold work when practical. It's safer than using your hand and it frees both hands to operate tool.
14. **Don't Overreach.** Keep proper footing and balance at all times.
15. **Maintain Tools Properly.** Keep tools sharp and clean for best and safest performance. Follow instructions for lubricating and changing accessories. Equipment operators must have proper maintenance & instruction sheets. Be sure the tool operator reads and understands this information. If you don't have current maintenance and instruction sheets, contact the factory & we will supply them at no charge.
16. **Disconnect Tools** when not in use; before servicing; when changing accessories such as dies, cutters, etc.
17. **Avoid Accidental Starting.** Don't carry plugged-in tool with finger on switch. Be sure switch is off when plugging in.
18. **Outdoor Use Extension Cords.** When tool is used outdoors, use only extension cords suitable for use outdoors and so marked.
19. **Wear Ear Protection** if exposed to long periods of very noisy shop operations.
20. **Do not operate** tools while under the influence of alcohol, drugs or medication.

NOTES





Wheeler Rex ▪ 3744 Jefferson Road ▪ Ashtabula, Ohio 44005

Tel: 800-321-7950 or 440-998-2788 ▪ Fax: 440-992-2925

wheeler@wheelerrex.com ▪ www.wheelerrex.com