

**WHEELER/REX 6790
(N100A)**

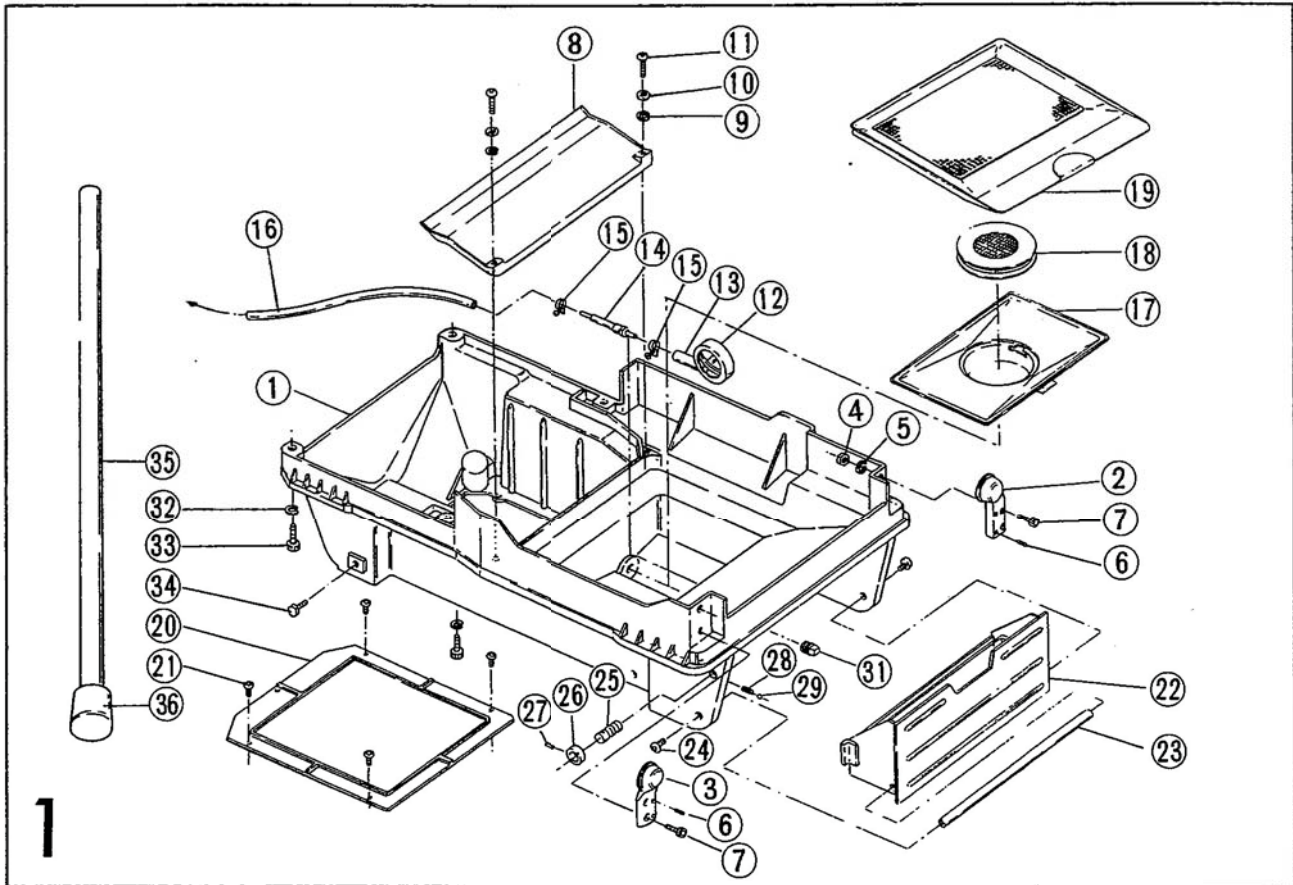
Parts List

Ref. No. 199107



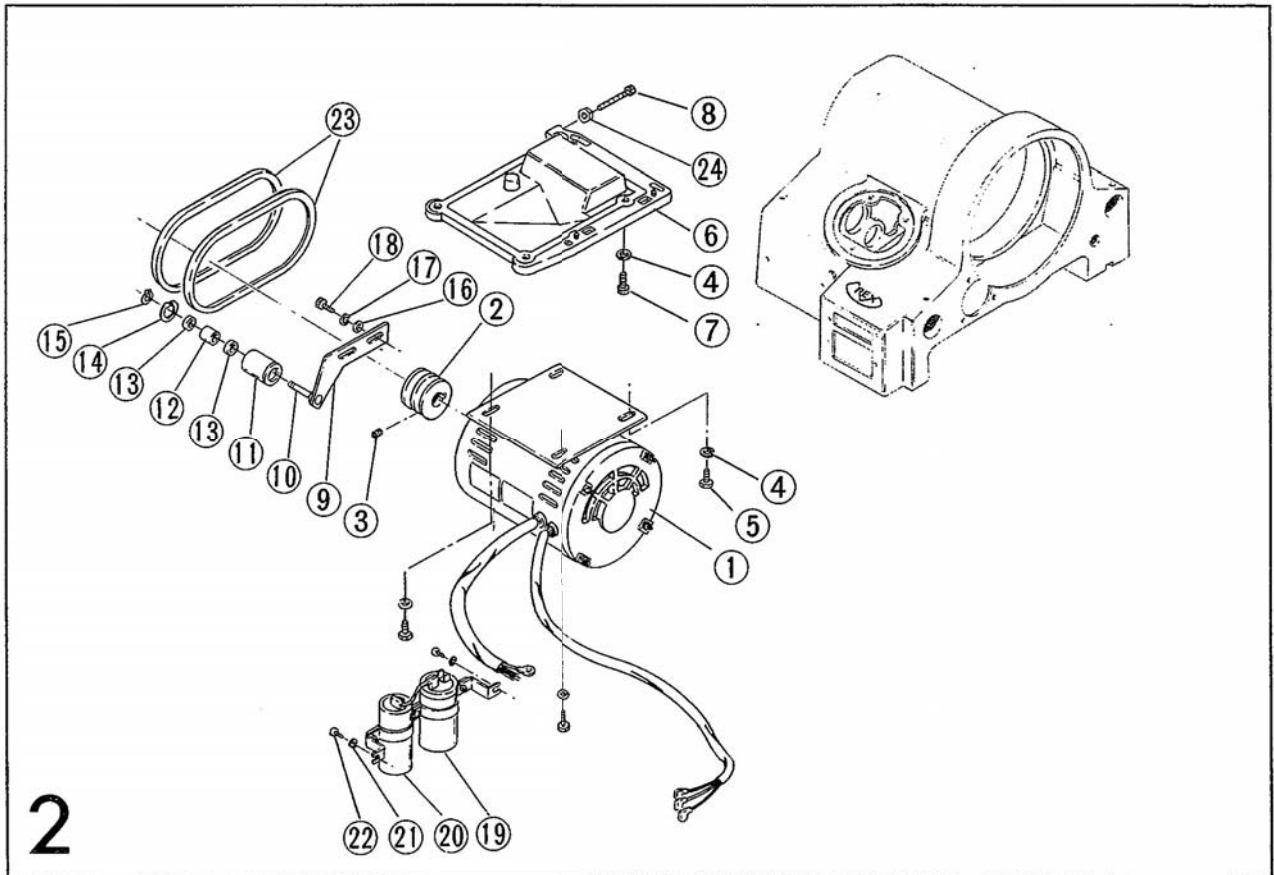
REX Industries Co.,Ltd.

WHEELER/REX 6790 (N100A) (Base)



No.	Part No. (Wheeler)	Part Name	Set	Part No. (REX)	
1	6 0 3 5 0 0	Base	1	J 0 0 1	
2	6 0 3 5 0 1	Support (Right)	1	J 0 0 2	
3	6 0 3 5 0 2	Support (Left)	1	J 0 0 3	
4	6 0 0 3 2 8	Nut (M8)	4	W C 0 8	
5	6 0 0 1 3 0	Spring washer (φ8)	4	W G 0 8	
6	6 0 0 3 4 4	Roll pin (φ6×28)	4	W L 6 5	
7	6 0 3 5 0 3	Torx socket head cap screw (M8×25)	4	W 0 8 3	
8	6 0 3 5 0 4	Base cover	1	J 0 0 6	
9	6 0 0 2 4 8	Washer (φ5)	2	W 1 5 2	
10	6 0 0 1 2 4	Spring washer (φ5)	2	W G 0 5	
11	6 0 0 6 4 9	Round head machine screw (M5×25)	2	W 2 5 5	
12	6 0 0 7 3 1	Strainer	1	N 0 4 8	Set Tapping screw (M5×10) 6090
13	6 0 3 5 0 5	Oil intake line suction tube (A)	1		
14	6 0 3 5 0 6	Nipple	1	J 0 1 5	
15	6 0 0 2 1 3	Pipe band	2	Z J 5 0	6090, 6190, 6390, 6490, 6590
16	6 0 3 5 5 0	Oil intake line suction tube			
17	6 0 3 5 0 7	Tank upper cover	1	J 0 0 4	
18	6 0 3 5 0 8	Upper cover strainer cap	1	J 0 0 5	
19	6 0 3 5 0 9	Scrap receiver	1	J 0 0 7	
20	6 0 3 5 1 0	Bottom cover	1	J 0 0 8	
21	6 0 0 3 2 9	Round head machine screw (M5×8)	4	W 2 5 1	
22	6 0 3 5 1 1	Built-in tool box	1	J 0 1 0	
23	6 0 3 5 1 2	Tool box shaft	1	J 0 1 1	
24	6 0 3 5 1 3	Truss screw (M8×20)	2	W 5 8 5	
25	6 0 3 5 1 4	Stopper pin A	1	J 0 1 2	
26	6 0 3 5 1 5	Stopper pin B	1	J 0 1 3	
27	6 0 3 5 1 6	Roll pin (φ4×20)	1		
28	6 0 3 5 1 7	Spring (φ5×12)	1	7 7 5 2	
29	6 0 0 3 4 6	Steel ball (φ5)	1	W Q 0 5	
30					
31	6 0 0 1 8 3	Drain plug	1	W A 4 6	
32	6 0 0 4 2 9	Spring washer (φ10)	4	W G 1 0	
33	6 0 0 1 8 1	Socket head cap screw (M10×40)	4	W G 0 4	
34	6 0 0 2 4 9	Hexagon head cap screw (M10×30)	4	W 1 0 1	
35	6 0 3 5 1 9	Pipe stand with leg cap	4	N 1 2 1 + N 1 2 5	6090, 6190, 6390, 6490, 6590
36	6 0 3 5 2 0	Leg cap	4	N 1 2 5	6090, 6190, 6390, 6490, 6590
37					
38					
39					
40					

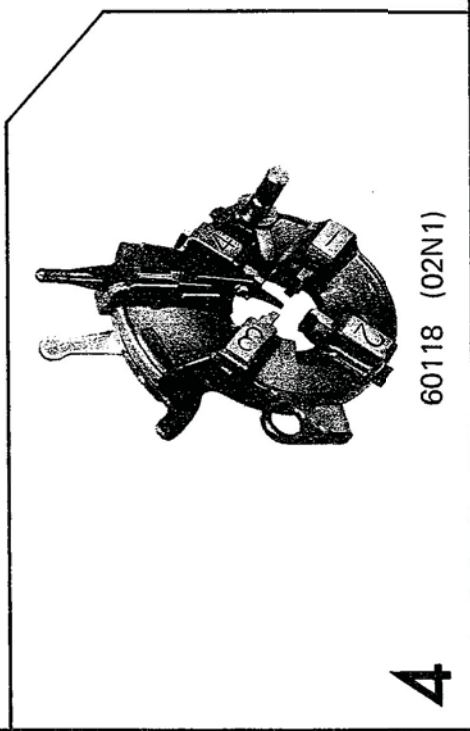
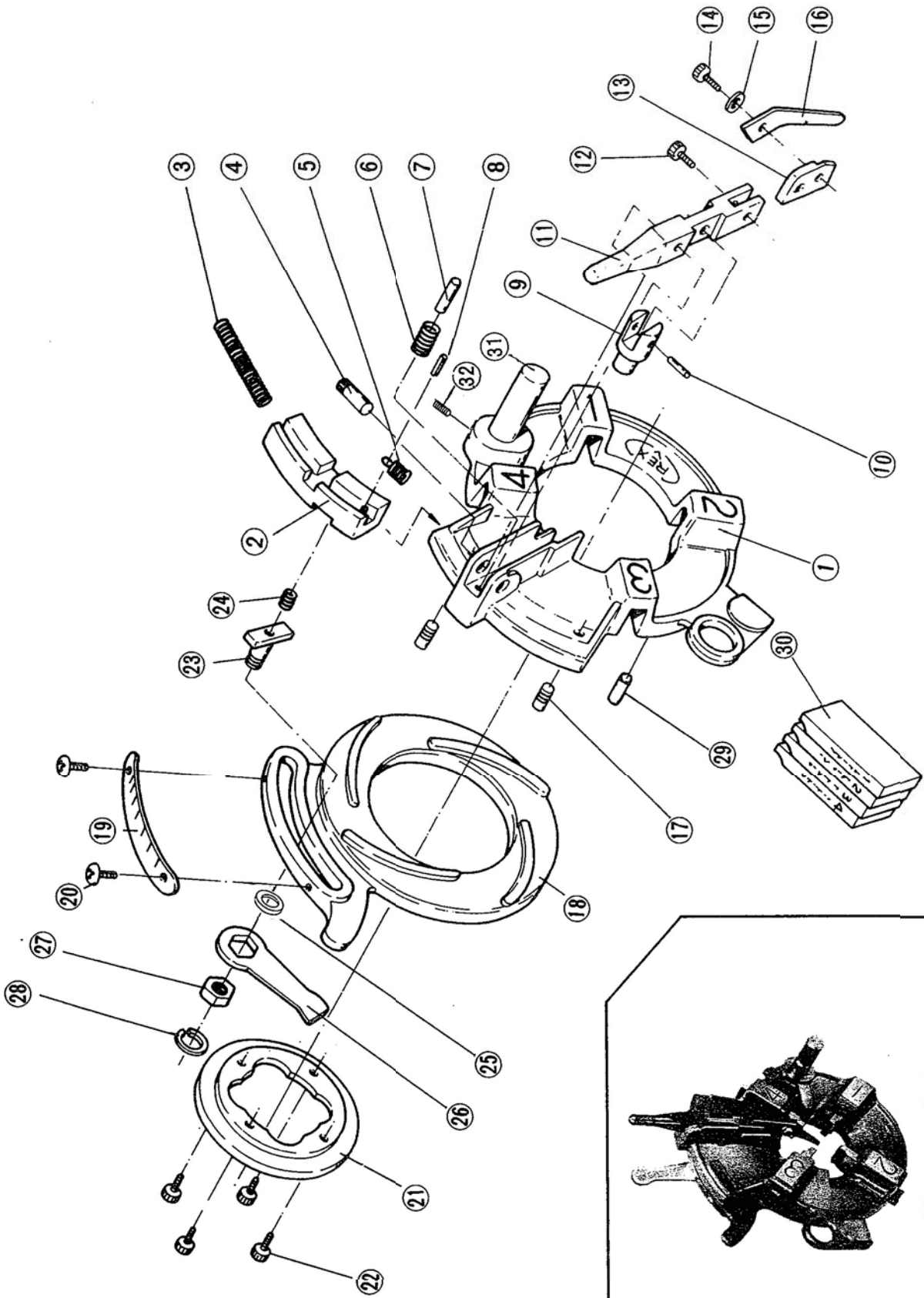
WHEELER/REX 6790 (N100A) (Motor)



No.	Part No. (Wheeler)	Part Name	Set	Part No. (REX)		
1	6 0 3 5 2 1	Condenser motor (1.0kw 120/240V)	1	J 0 3 0 T		
2	6 0 3 5 2 2	Motor pulley	1	4 9 3 1		
3	6 0 0 2 9 1	Hex-socket set screw (M8×8)	1	W 7 8 A		
4	6 0 3 5 2 3	Spring washer (φ10)	8	W G 1 0		
5	6 0 0 4 7 3	Hexagon head cap screw (M10×20)	4	W 1 8 1		
6	6 0 3 5 2 4	Motor holder	1	J 0 2 0		
7	6 0 3 5 2 5	Socket head cap screw (M10×25)	4	W 0 0 2		
8	6 0 0 1 9 3	Socket head cap screw (M8×60)	1	W 0 8 C		
9		Tension pulley adjustment mounting	1	J 0 2 3	603526 Set (J019)	
10		Tension pulley adjustment pin	1	J 0 2 4		
11	6 0 3 5 2 7	Tension pulley	1	J 0 2 5		0JHP1S Tension pulley complete set
12	6 0 3 5 2 8	Tension pulley bearing collar	1	J 0 2 6		
13	6 0 3 5 2 9	Bearing (#60012Z)	2	J 3 0 0		
14	6 0 3 5 3 0	Snap ring (in side φ28)	1	W W A 2		
15	6 0 3 5 3 1	Snap ring (out side φ12)	1	W W 1 2		
16	6 0 0 2 4 5	Washer (φ8)	2	W 1 8 4		
17	6 0 0 1 3 0	Spring washer (φ8)	2	W G 0 8		
18	6 0 3 5 3 2	Socket head cap screw (M8×20)	2	W 0 8 2		
19		Driver condenser	1	4 9 C S T	Condenser set	
20		Starter condenser	1			
21	6 0 0 2 4 8	Washer (φ5)	2	W 1 5 2		
22	6 0 0 3 2 9	Round head machine screw (M5×8)	2	W 2 5 1		
23	6 0 3 5 3 3	V-belt (A-24)	2	Z 8 2 4		
24	6 0 0 3 2 8	Nut (M8)	1	W 0 0 8		
25						
26						
27						
28						
29						
30						
31						
32						
33						
34						
35						
36						
37						
38						
39						
40						

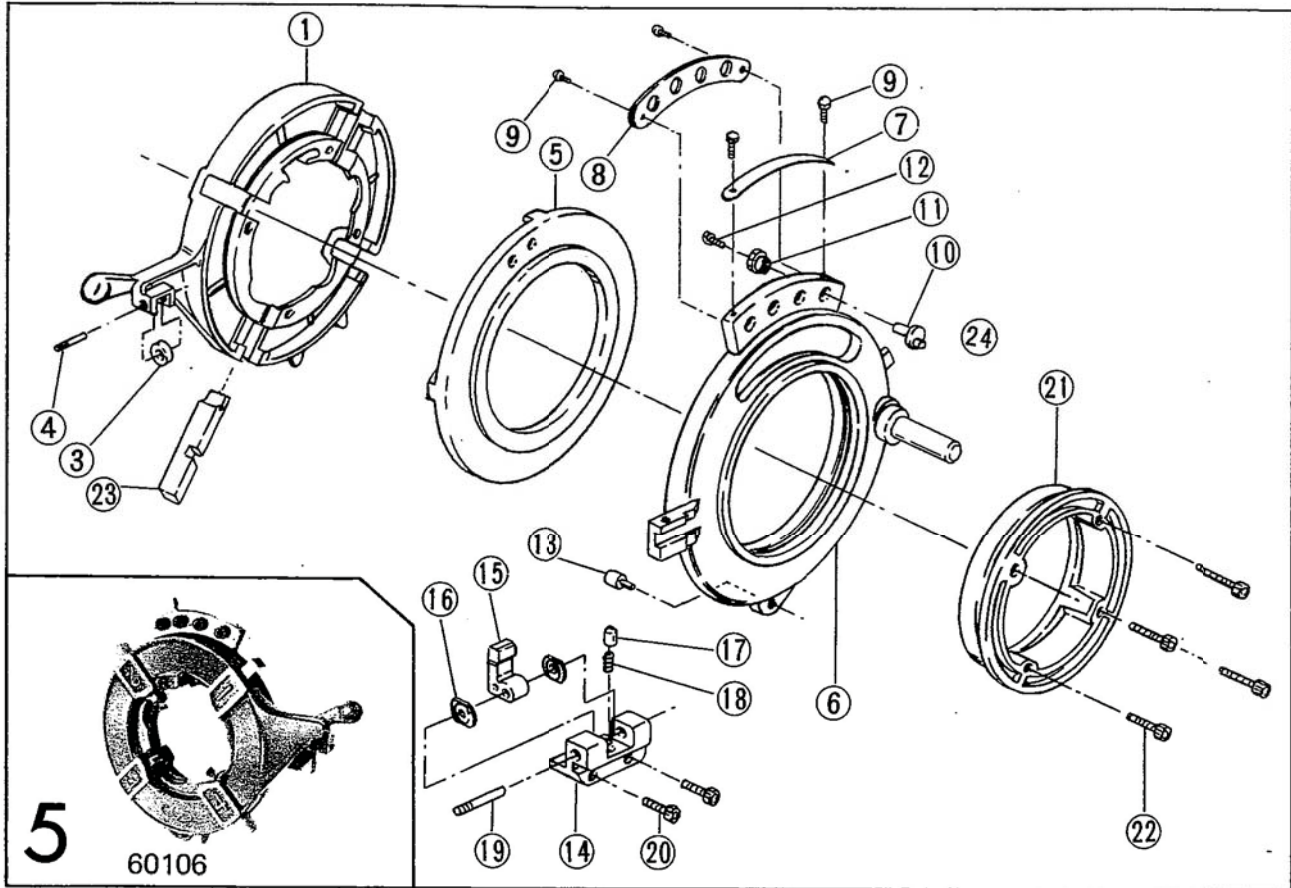
No.	Part No. (Wheeler)	Part Name	Set	Part No. (REX)	
1	603534	Head stock	1	J048	
2	600290	Main shaft gear	1	J036	} Set (02JJ)
3		Main shaft	1	J038	
4	603537	Hand wheel	1	J703	
5	603538	Straight pin (φ8×20)	1	WN08	6490
6	607005	Front main shaft bearing	1	A005	6490
7	600867	Rear main shaft bearing	1	J039	6490
8	600127	Roll pin (φ4×10)	4		
9	607008	Thrust ring	1	A008	6490
10	607007	Rear scroll	1	J0S3	} 607006 Rear chuck complete set (A006) 6490
11	605014	Rear chuck cover	1	J0S2	
12	605012	Rear chuck receptacle	1	J0S1	
13	605013	Rear chuck jaw	3	A0SS	
14	600131	Socket head cap screw (M6×16)	6	W062	
15	600132	Spring washer (φ6)	6	WG06	
16	600177	Nut (M6)	6	WL63	
17	600149	Roll pin (φ6×18)	3	JH00	} 603542 Chuck complete set (RT-RT) (J051) } Chuck jaw set 603541 (JICJS) } 60307 Chuck jaw insert set (AORT) 6490
18	603539	Chuck body	1	JS00	
19	603540	Scroll	1		
20	603541	Chuck jaw	3		
21		Chuck jaw insert	3		
22		Spring retainer	3		
23		Spring	3		
24		Set screw	6		
25	603543	Socket head cap screw (M7×54)	6		
26	603544	Gear case cover	1	J040	
27	603545	Socket head cap screw (M5×18)	6	W055	
28	600911	Hex-socket pipe plug (PT ¹ / ₄)	1		
29	600623	Hex-socket pipe plug (PT ³ / ₈)	1	WA44	
30	603546	Oil gauge (N-1)	1	J320	
31	603547	Window cap	1	J042	
32	600179	Round head machine screw (M5×10)	3	W252	
33	604040	Hose guide	1	4040	6390
34	604086	Hose band	1	4086	6390
35	600132	Spring washer (φ6)	1	WG06	6390
36	600204	Round head machine screw (M6×10)	1		6390
45	600143	Rivet (#0×5)	4		
46	600942	Earth	1		
47					
48	600943	Cord bush	1	7021	6090,6390,6590,6890
49	600944	Name plate	1	J049	
50	600621	Rivet (#4×5)	2		
51	604025	Gear pump	1	4025	
52	603549	Vinyl tube 100 (ℓ)	1		
53	603550	Oil intake line suction tube (B) 700 (ℓ)	1	0410	
54	603551	Oil feed line tube 530 (ℓ)	1	0410	
55	603552	Gear pump gasket	1	J047	
56	600486	Socket head cap screw (M6×20)	1		
57	600222	Socket head cap screw (M6×35)	1		
58	600132	Spring washer (φ6)	2	WG6A	
59	603553	Rear cover	1	J041	
60	600248	Washer (φ5)	4		
61	600179	Round head machine screw (M5×10)	4	W252	
62	600198	Grease nipple (M6)	2		
63	603554	Hex-socket set screw (cone M8×22)	4		
64	603555	Hex-socket set screw (half dog M8×25)	1		
65	600213	Pipe band (10mm)	2	ZJ50	
66	603557	Warning plate A	1	L098	
67	603558	Warning plate B	1	L099	
68	600945	Power cord	1	Z992	
69	601035	Joint	2	1035	
70		Cam switch warning plate	1	J099	
71					
72	600937	Oval head machine screw (M4×10)	2		
73	600941	Binder C-15	1	7098	6090,6390,6590,6890
74	600191	Round head machine screw (M4×10)	1		6390
75	600959	Cam switch	1	F065	6090,6390,6590,6890
76	600960	Cam switch plate	1	F066	6090,6390,6590,6890
77					
78					
79					
80					
81					
82					

WHEELER/REX 6790 (N100A) (Self-opening die head 1/2~2")



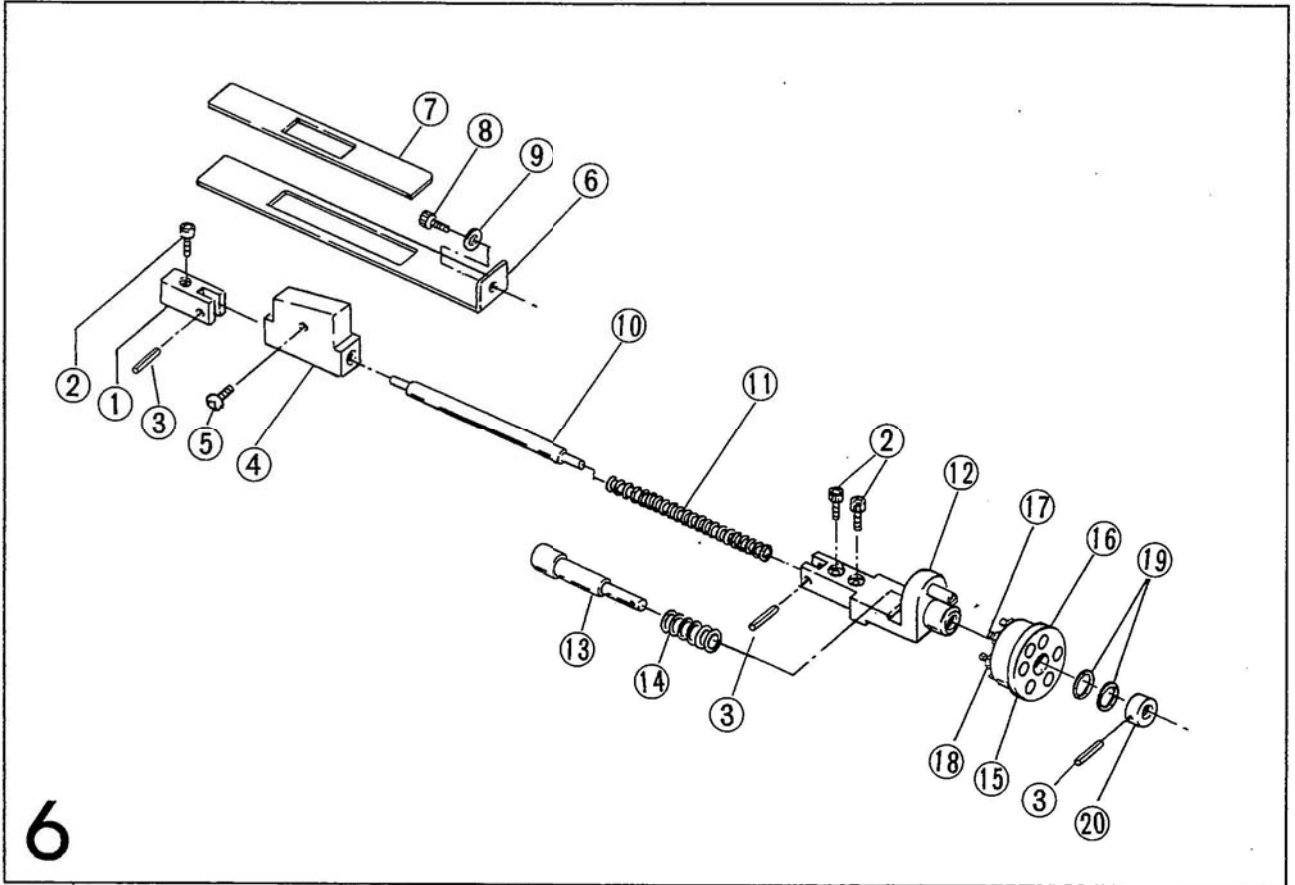
No.	Part No. (Wheeler)	Part Name	Set	Part No. (REX)	
1	600779	Die head body	1	N701	
2	600780	Opening block	1	N704	
3	600688	Spring	1	7697	
4	600781	Lever pin	1	N714	
5	600782	Spring	1	N720	
6	600783	Spring	1	N718	
7	600784	Spring guide (φ4×18)	1	N708	
8	600662	Roll pin (φ6×16)	1		
9	600785	Auto-open pin	1	N709	
10	600786	Straight pin	1	N716	
11	600787	Open lever	1	N711	
12	600663	Socket head cap screw (M8×15)	1		
13	600788	Auto-open link	1	N712	
14	600472	Socket head cap screw (M8×10)	1		
15	600245	Washer (φ8)	1		
16	600789	Auto-open lever C	1	N727	
17	600790	Stop screw	2	N717	
18	600791	Cam plate	1	N702	
19	600792	Size plate	1	N730	
20	600668	Truss screw (M4×5)	2	W541	
21	600793	Retaining ring	1	N703	Set Dies notch (G865)
22	600131	Socket head cap screw (M6×16)	4		
23	600794	Cam plate fixed pin	1	N706	
24	600795	Spring	1	N722	
25	600796	Flat washer (M12 x 26 x 23)	1	W106	
26	600797	Lever nut	1	N705	
27	600798	Nut (M20)	1	N707	
28	600664	Snap ring (out side φ20)	1		
29	600665	Roll pin (φ5×14)	1		
30	60201	Dies (1/2~3/4)	1 set	X041	
	60209	Dies (1~2)	1 set	X081	
31	600910	Die head post	1	7713	
32	606719	Hex socket set screw	1		
33	60118	Complete die head	1		6090
34					
35					
36					
37					
38					
39					
40					
41					
42					
43					
44					
45					
46					
47					
48					
49					
50					
51					
52					
53					
54					
55					
56					
57					
58					
59					
60					
61					
62					
63					
64					
65					
66					
67					
68					
69					
70					
71					

WHEELER/REX 6790 (N100A) (Profiling die head 2 1/2~4")



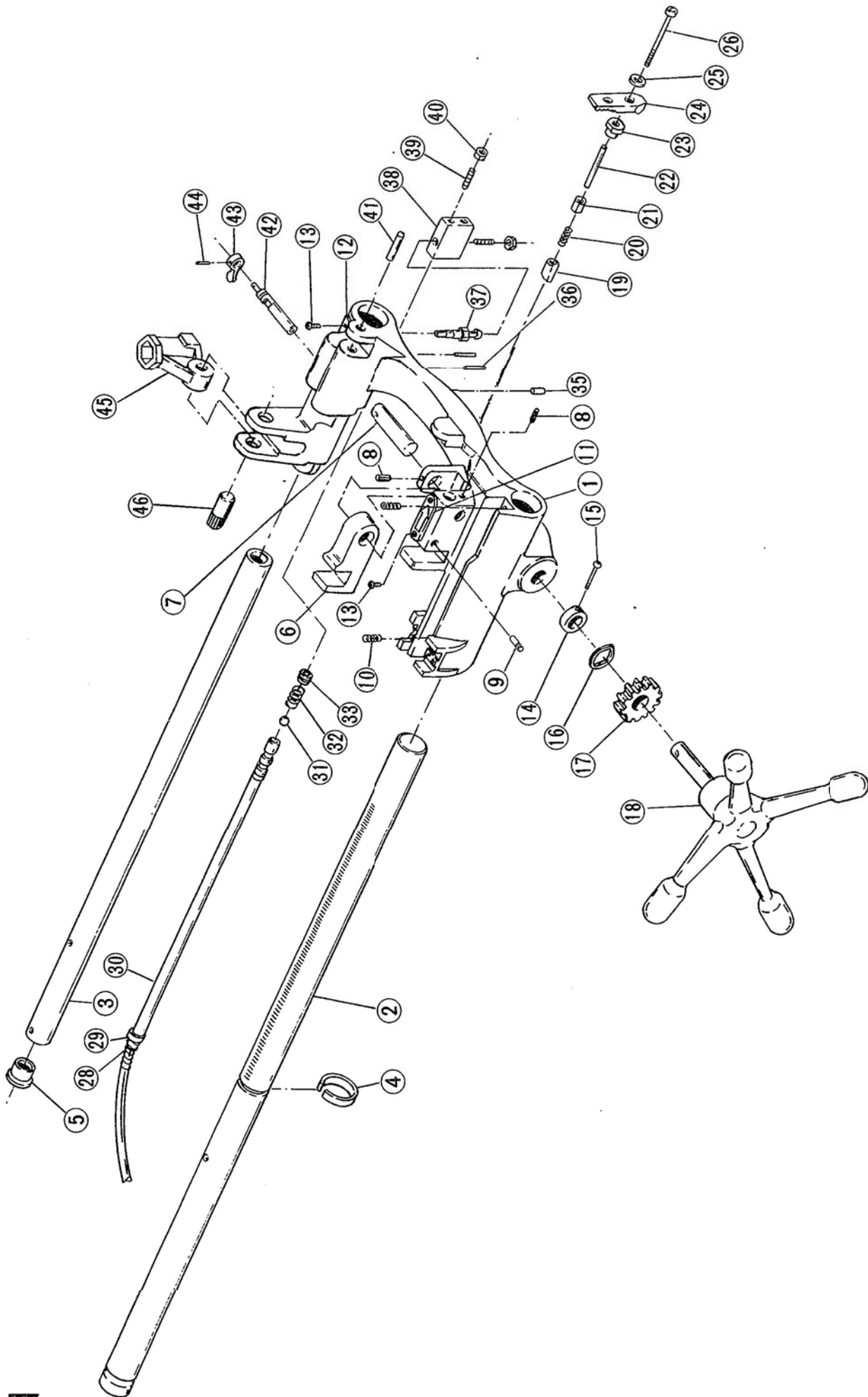
No.	Part No. (Wheeler)	Part Name	Set	Part No. (REX)	
1	6 0 0 8 6 5	Die head body (2 1/2~4)	1	J 1 0 3	
2					
3	6 0 3 5 6 0	Die head roller	1	T 0 0 8	6590
4	6 0 3 4 1 2	Die head roller pin	1	3 4 1 2	6490, 6590
5	6 0 3 5 6 1	Cam plate (2 1/2~4)	1	J 0 6 7	6590
6	6 0 3 5 6 2	Die head receiver plate (2 1/2~4)	1	J 1 0 0	Set Die head post (J076)
7	6 0 3 5 6 3	Die head size plate (2 1/2~4)	1	J 1 0 2	
8	6 0 3 5 6 4	Adjustment plate (2 1/2~4)	1	J 1 0 1	
9	6 0 0 6 2 1	Rivet (#4x5)	4		6590
10	6 0 4 6 9 2	Crank pin	4	7 6 9 2	6390, 6590
11	6 0 4 6 9 3	Size adjustment knob	4	7 6 9 3	6390, 6590
12	6 0 0 4 7 9	Socket head cap screw (M6x10)	4		6590
13	6 0 3 5 6 5	Die head position pin	1	J 0 7 7	6590
14	6 0 3 5 6 6	Size setting lever holder (2 1/2~4)	1	J 0 7 3	6590
15	6 0 4 6 9 0	Size setting lever	1	7 6 9 0	6390, 6590
16	6 0 4 7 4 3	Size adjustment plate	2	7 7 4 3	6390, 6590
17	6 0 4 7 9 0	Notch pin	1	7 7 9 0	6390, 6590
18	6 0 0 6 8 7	Spring (φ5x12)	1	7 7 5 2	6390, 6590
19	6 0 4 7 4 2	Retaining pin	1	7 7 4 2	6390, 6590
20	6 0 0 5 3 2	Socket head cap screw (M8x20)	2		6590
21	6 0 3 5 6 7	Retaining ring (2 1/2~4)	1	J 0 6 8	Set Dies notch (G860) 6590
22	6 0 0 2 3 8	Socket head cap screw (M6x40)	4		6490, 6590
23	6 0 2 0 6	Dies (2 1/2~4)	1 set	162360	6490, 6590
24	6 0 3 6 8 7	Die head post	1	J 0 7 6	
25					
26	6 0 1 0 6	Complete die head			
27					
28					
29					
30					
31					
32					
33					
34					
35					
36					
37					
38					
39					
40					

WHEELER/REX 6790 (N100A) (Carriage <Profiling>)



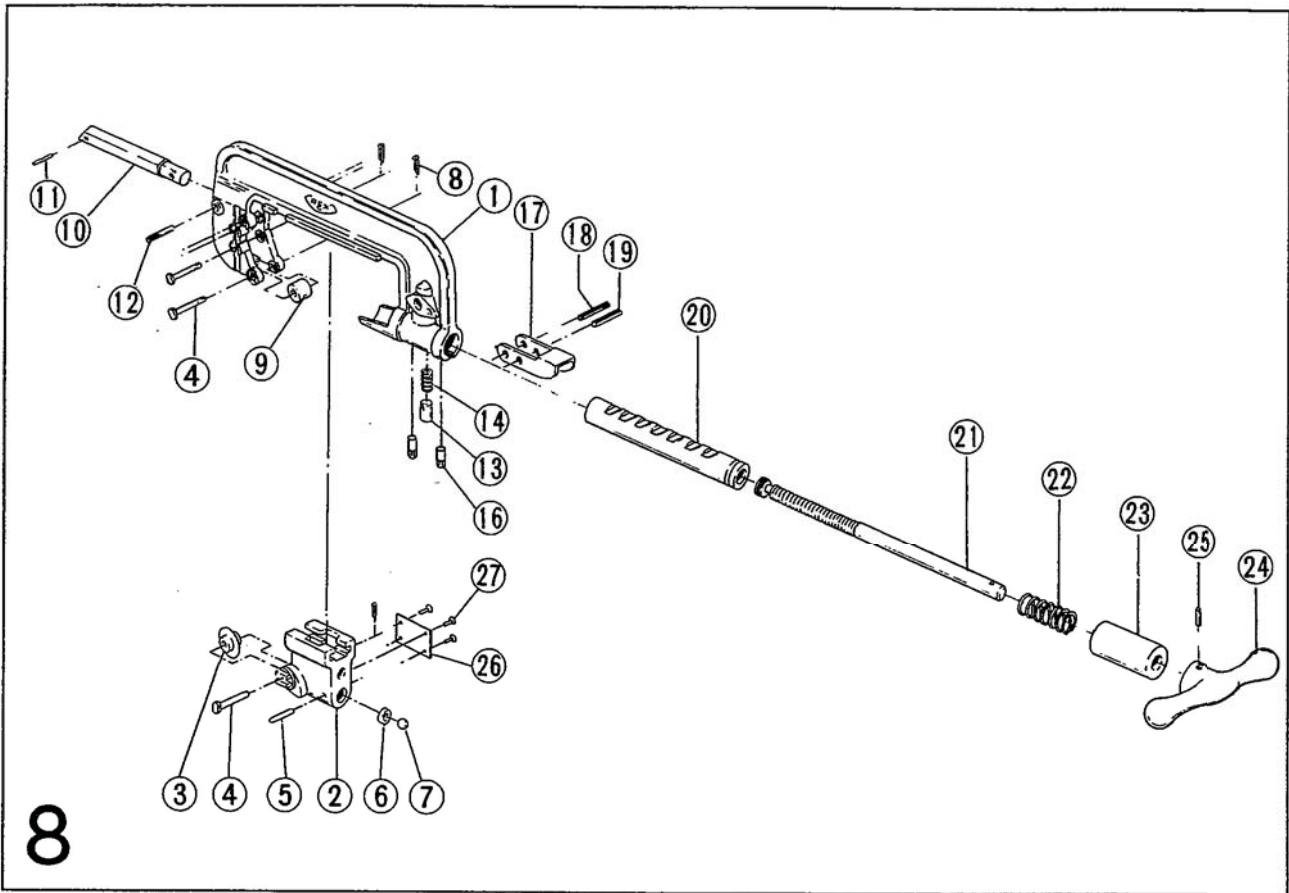
No.	Part No. (Wheeler)	Part Name	Set	Part No. (REX)	
1	603568	Spring support shaft holder A	1	J116	
2	600486	Socket head cap screw (M6×16)	3	W062	
3	600516	Roll pin (φ4×20)	3	WL46	6590
4	603569	Profiling board	1	J115	
5	600432	Round head machine screw (M5×6)	1	W250	6590
6	603570	Profiling cover A	1	J121	
7	603571	Profiling cover B	1	J122	
8	600472	Socket head cap screw (M8×10)	1	W084	6590
9	600245	Washer (φ8)	1		6590
10	603572	Spring support shaft	1	J123	
11	603573	Spring	1	J149	
12	603574	Spring support shaft holder B	1	J117	Set Size stopper pin (J120)
13	603575	Size adjustment shaft	1	J119	
14	603576	Spring	1	J150	
15	603577	Size plate	1	J124	
16	603578	Size plate cover	1	J135	
17	603579	Socket head cap screw (4")	1	J239	} 603679 Profiling block assembly (OJSA3S)
	603580	Socket head cap screw (3 1/2")	1	J231	
	603581	Socket head cap screw (3")	1	J241	
	603582	Socket head cap screw (2 1/2")	1	J242	
18	603583	Spring	1	J151	
19	603584	Wave washer (φ12)	2	WH12	6590
20	603585	Stop collar	1	J126	6590
21					
22					
23	600283	Complete profiling assembly			
24					
25					
26					
27					
28					
29					
30					
31					
32					
33					
34					
35					
36					
37					

WHEELER/REX 6790 (N100A) (Carriage)



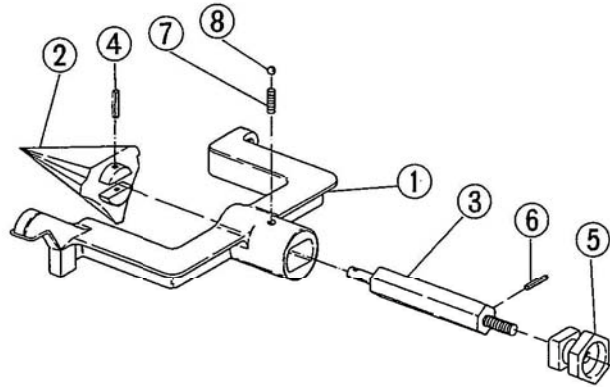
No.	Part No. (Wheeler)	Part Name	Set	Part No. (REX)	
1	603586	Carriage	1	J110	
2	603587	Carriage support bar A	1	J111	
3	603588	Carriage support bar B	1	J112	
4	603589	Carriage support collar	1	7911	
5	603590	Carriage support bar B cap	1	J148	
6	603591	Die head holder	1	J113	
7	603592	Die head holder shaft	1	J114	
8	600483	Roll pin ($\phi 5 \times 12$)	1		
9		Oil joint pin	1	1036	
10	600434	Spring	2	E140	6590
11	603594	Open plate	1	J145	
12	603595	Oil flow selector plate	1	J155	
13	600621	Rivet (#4x5)	4		
14	609018	Feed gear stop ring	1	9018	6490,6590
15	600341	Round head machine screw (M5x30)	1		6490,6590
16	600810	Wave washer ($\phi 20$)	1		6190,6490,6590
17	607515	Carriage feed gear	1	A515	6190,6590
18	607517	Carriage handle	1	A517	Set 607516 Feed gear shaft (A516) 6490,6590
19	607109	Die head stop pin	1	A109	6490,6590
20	607115	Spring	1	A115	6590
21	603596	Knob pin bush S	1	J147	
22	603597	Knob pin bush	1	J139	
23	607110	Die head stop pin cover	1	A110	6490,6590
24	603598	Die head lock knob	1	J136	
25	603599	Hemi-spherical washer ($\phi 5$)	1	J137	
26	603600	Socket head-cap screw (M5x60)	1		
27					
28	600213	Copper wire ($\phi 0.8 \times 200\ell$)	1		
29	601035	Oil joint	1	1035	6590
30	603601	Oil pipe (Large)	1	J140	
31					
32	603602	Spring	1		
33	600169	Hex-socket set screw (M10x10)	1		
34					
35	606488	Ball plunger ($\phi 10$)	1	G861	
36	603603	Roll pin ($\phi 5 \times 45$)	2		
37	603604	Oil pipe (Smool)	1	J142	
38	603605	Oil pipe connector	1	J141	
39	603606	Hex-socket set screw (cone M6x25)	2		
40	600811	Jam nut (M6)	2		
41	609045	Reamer arm stop pin	1	1096	6090,6390
42	603607	Oil flow selector shaft	1	J143	Set O-ring ($\phi 12$)
43	603608	Oil flow selector lever	1	J144	
44	600207	Roll pin ($\phi 3 \times 18$)	1		
45	603609	Cutter arm	1	J162	
46	603610	Cutter arm stop pin	1	J166	
47					
48					
49					
50					
51					
52					
53					
54					
55					
56					
57					
58					
59					
60					
61					
62					
63					
64					
65					
66					
67					
68					
69					
70					
71					
72					

WHEELER/REX 6790 (N100A) (Cutter)



No.	Part No. (Wheeler)	Part Name	Set	Part No. (REX)	
1	6 0 3 6 1 1	Cutter frame	1	J 1 6 0	
2	6 0 3 6 1 2	Cutter guide	1	J 1 6 1	
3	6 0 3 2 4	Cutter wheel	1	E 2 2 6	6490
4	6 0 0 6 7 0	Cutter pin L	5	E 2 2 5	6490
5	6 0 0 4 8 7	Roll pin	1	($\phi 5 \times 30$)	
6	6 0 3 6 1 3	Thrust roller	1	J 1 6 4	
7	6 0 3 6 1 4	Steel ball	1	($\phi 10$)	
8	6 0 0 1 7 1	Spring cotter	5	(#2.3×15)	6390, 6490, 6590
9	6 0 5 0 7 4	Cutter roller	4	5 0 7 4	6390, 6490, 6590
10	6 0 3 6 1 5	Cutter arm shaft	1	J 1 6 5	
11	6 0 3 6 1 6	Roll pin	1	($\phi 5 \times 35$)	
12	6 0 9 0 2 7	Cutter guide pin	1	9 0 2 7	
13	6 0 3 6 1 8	Adjustment pin	1	J 1 7 0	6090
14	6 0 3 6 1 9	Spring	1	J 1 7 4	
15					
16	6 0 0 4 8 3	Pin	2	J 1 7 5	
17	6 0 3 6 2 1	Open lever	1	J 1 7 1	
18	6 0 0 1 7 4	Roll pin	1	($\phi 6 \times 45$)	
19	6 0 0 4 8 2	Roll pin	1	($\phi 8 \times 45$)	
20	6 0 3 6 2 2	Feed holder	1	J 1 6 8	
21	6 0 3 6 2 3	Feed screw	1	J 1 6 3	
22	6 0 3 6 2 4	Spring	1	J 1 7 3	
23	6 0 3 6 2 5	Stop cap	1	J 1 6 9	
24	6 0 3 6 2 6	Cutter handle	1	E 2 0 5	6590
25	6 0 3 6 2 7	Roll pin	1	($\phi 6 \times 35$)	6490, 6590
26	6 0 3 6 2 8	Cutter caution plate	1		
27	6 0 0 1 4 3	Rivet	4	(#0×5)	
28					
29					
30	6 0 3 6 8 0	Complete cutter		0 2 J P	
31					
32					
33					
34					
35					
36					
37					
38					
39					
40					

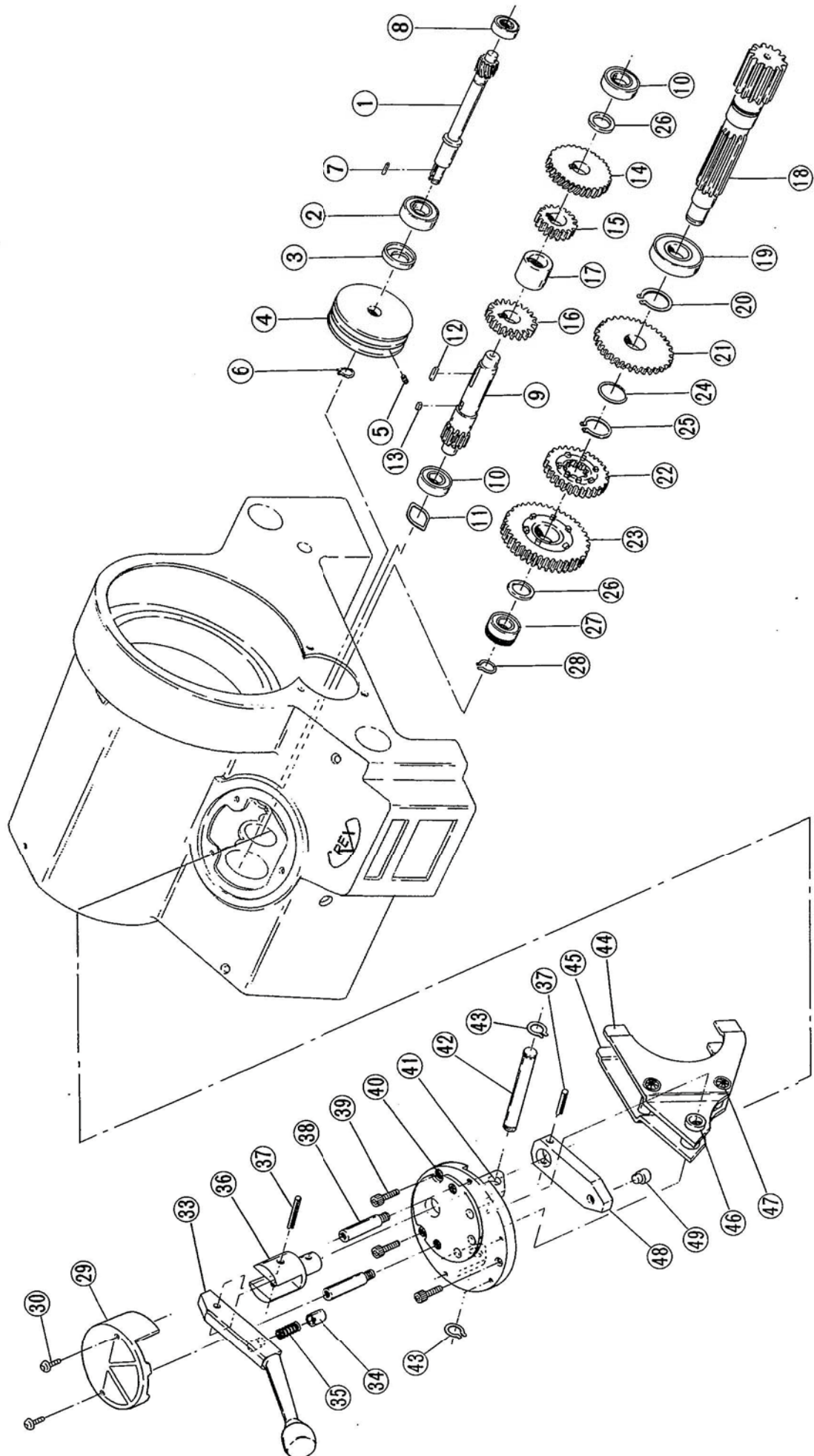
WHEELER/REX 6790 (N100A) (Reamer)



9

No.	Part No. (Wheeler)	Part Name	Set	Part No. (REX)	
1	6 0 3 6 2 9	Reamer arm	1	A 5 2 1	
2	6 0 3 0 3	Reamer cone	1	A 5 2 2	6490
3	6 0 7 2 5 3	Reamer shaft	1	A 2 5 3	6490, 6590
4	6 0 0 2 2 7	Roll pin (φ8×50)	1		6590
5	6 0 1 0 9 4	Reamer knob	1	1 0 9 4	6390, 6490, 6590
6	6 0 0 1 2 7	Roll pin (φ4×10)	1		6390, 6590
7	6 0 0 2 2 4	Spring (φ8×10)	1	5 0 9 6	6090, 6190, 6490, 6590
8	6 0 0 1 6 8	Steel ball (φ8)	1		6090, 6190, 6490, 6590
9					
10					
11	6 0 3 6 8 1	Complete reamer		0 2 J R	
12					
13					
14					
15					
16					
17					
18					
19					
20					
21					
22					
23					
24					
25					
26					
27					
28					
29					
30					
31					
32					
33					
34					
35					
36					
37					
38					
39					
40					

WHEELER/REX 6790 (N100A) (Gear case)



No.	Part No. (Wheeler)	Part Name	Set	Part No. (REX)	
1	6 0 3 6 3 0	A shaft	1	J 1 8 0	
2	6 0 7 1 9 2	Bearing (#5205LL)	1	A 1 9 2	6490, 6590
3	6 0 3 6 3 1	Oil seal (TCV254511)	1	J 3 1 0	
4	6 0 3 6 3 2	Mission pulley	1		
5	6 0 0 6 6 9	Hex-socket set screw (M8×12)	1		
6	6 0 0 6 7 9	Snap ring (out sde φ18)	1		
7	6 0 0 4 8 4	Key (5×5×20)	1		
8	6 0 3 6 3 3	Bearing (#5202LL)	1	H 2 7 2	6390
9	6 0 3 6 3 4	B shaft	1	J 1 8 1	
10	6 0 7 1 9 1	Bearing (#6004LL)	2	A 1 9 1	6490, 6590
11	6 0 0 8 1 0	Wave washer (BVW6203)	1		
12	6 0 3 6 3 5	Key (8×7×22)	1		
13	6 0 3 6 3 6	Key (8×7×12)	1		
14	6 0 3 6 3 7	B shaft gear A	1	J 1 8 2	
15	6 0 0 6 3 8	B shaft gear B	1	J 1 8 3	
16	6 0 3 6 3 9	B shaft gear C	1	J 1 8 4	
17	6 0 3 6 4 0	B shaft collar	1	J 1 9 2	
18	6 0 3 6 4 1	C shaft	1	J 1 8 5	
19	6 0 3 6 4 2	Bearing (#6007LLU)	1	J 3 0 2	
20	6 0 3 6 4 3	Snap ring (out sde φ35)	1		
21	6 0 3 6 4 4	C shaft gear A	1	J 1 8 6	
22	6 0 3 6 4 5	C shaft gear B	1	J 1 8 7	
23	6 0 3 6 4 6	C shaft gear C	1	J 1 8 8	
24	6 0 3 6 4 7	C shaft collar (Smool)	1	J 1 9 4	
25	6 0 3 6 4 8	Snap ring (out sde φ30)	1		
26	6 0 3 6 4 9	C shaft collar (Large)	2	J 1 9 3	
27	6 0 3 6 5 0	Bearing (#6204ZNR)	1	J 3 0 1	
28	6 0 0 6 6 4	Snap ring (out sde φ20)	1		
29	6 0 3 6 6 5	Speed change cap	1	J 2 0 1	
30	6 0 3 6 6 6	Socket button head cap screw (M6×15)	2		
31					
32					
33	6 0 3 6 6 8	Speed change lever	1	J 2 0 2	
34	6 0 3 6 6 9	Notch pin	1	J 2 0 3	
35	6 0 3 6 7 0	Spring	1	J 2 1 6	
36	6 0 3 6 7 1	Speed change shaft	1	J 2 0 4	
37	6 0 0 3 4 4	Roll pin (φ6×30)	2		
38	6 0 3 6 7 2	Stud bolt	2	J 2 1 5	
39	6 0 0 1 3 1	Socket head cap screw (M6×16)	3		
40		Speed change cover	1	J 2 0 0	} 603673 Set (J220)
41		Speed change guide	1	J 2 0 6	
42	6 0 3 6 7 4	Guide pin	1	J 2 0 7	
43	6 0 3 6 7 5	Snap ring (out sde φ10)	2		
44		Gear shift fork A	1	J 2 0 9	} 603676 Set (J221)
45		Gear shift fork B	1	J 2 1 0	
46		Shift pin A	1	J 2 1 1	
47		Shift pin B	2	J 2 1 2	
48	6 0 3 6 7 7	Fork lever	1	J 2 0 5	
49	6 0 3 6 7 8	Fork lever pin	1	J 2 0 8	
50					
51					
52					
53					
54					
55					
56					
57					
58					
59					
60					
61					
62					
63					
64					
65					
66					
67					
68					
69					
70					
71					
72					



WHEELER MANUFACTURING

Div. of REX International U.S.A., Inc.:

P.O.Box 688 · 3744 Jefferson Road · Ashtabula, Oh 44005

Ph:440 - 998 - 2788 · Fax.: 440 - 992 - 2925

Toll Free: 1 - 800 - 321 - 7950

Web Site: www.wheelerrex.com

Manufacturer:

REX

www.rexind.co.jp

REX INDUSTRIES CO., LTD.

N100A-WL
0803D 0050